



Chadwick Place, KT6

£599,950

A wonderful, bright and spacious two bedroom, two bathroom property with allocated parking and beautiful communal grounds. This immaculately presented ground floor apartment is set in a private estate within the Berkley Homes development and offers quiet, convenient living and ultimate convenience.

Grosvenor Gate sits peacefully opposite Victoria Park/ Chadwick Place and has everything you need within half a mile, including the River Thames, the desirable Maple Road, Surbiton high street and train station with its fast and direct trains to London Waterloo in as fast as 16 minutes.

Features

- Ground Floor Apartment
- Two Double Bedrooms
- Two Bathrooms
- Landscaped Grounds
- Allocated Parking
- High Specification Finish



Chadwick Place, KT6

Accommodation includes two generous double bedrooms, two sleek bathrooms, a modern integrated kitchen and a large living/dining room which is perfect for hosting and living comfortably.

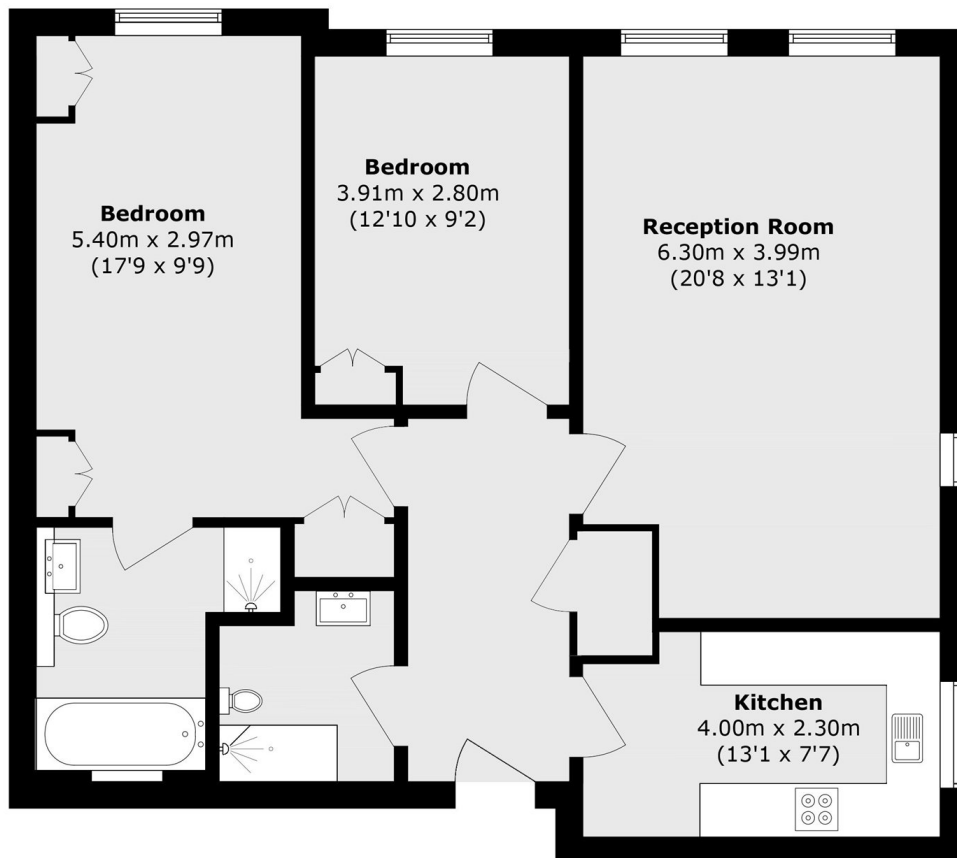
With impressively high ceilings, pretty cornicing and large sash windows, there is a real sense of light, space and grandeur.

Residents also enjoy access to beautifully maintained communal grounds, offering a peaceful retreat from city life. This exceptional apartment presents a rare opportunity to acquire a luxury home in a sought-after location.

The property also benefits from allocated parking to the rear of the building



Chadwick Place, Surbiton, KT6



Total area (approx.): 85.4 sq. m (919.2 sq. ft)