

richard
james



162 Eastlake

Tadpole Garden Village, Swindon, SN25 2RZ

Asking price
£375,000





162 Eastlake

Tadpole Garden Village, Swindon, SN25 2RZ

Freehold | EPC Rating - B

 3  2  1

A modern three bedroom semi detached home, built by Crest Nicholson, and well positioned within the ever popular Tadpole Garden Village.

The standout feature here is the open plan layout across the rear of the property, combining the kitchen, dining, and living space into one sociable area. It's a great setup for both day to day living and having people over, with doors opening straight out onto the garden, helping bring the outside in. There's also a downstairs cloakroom off the entrance hall.



Izzy Bowles
Partner

01793 311 039
07460 922 221

isobelbowles@richardjames.uk



Scan here

No onward
chain





Upstairs, the main bedroom is a really bright space thanks to full length windows, and benefits from built in wardrobes and its own en-suite. The second bedroom is a comfortable double, with the third making an ideal single room, home office or nursery. A modern family bathroom serves the remaining rooms.

Outside, the garden is a good size and offers plenty of usable space, with the added bonus of a door directly into the garage. To the side, there's a driveway providing off road parking in front of the garage.

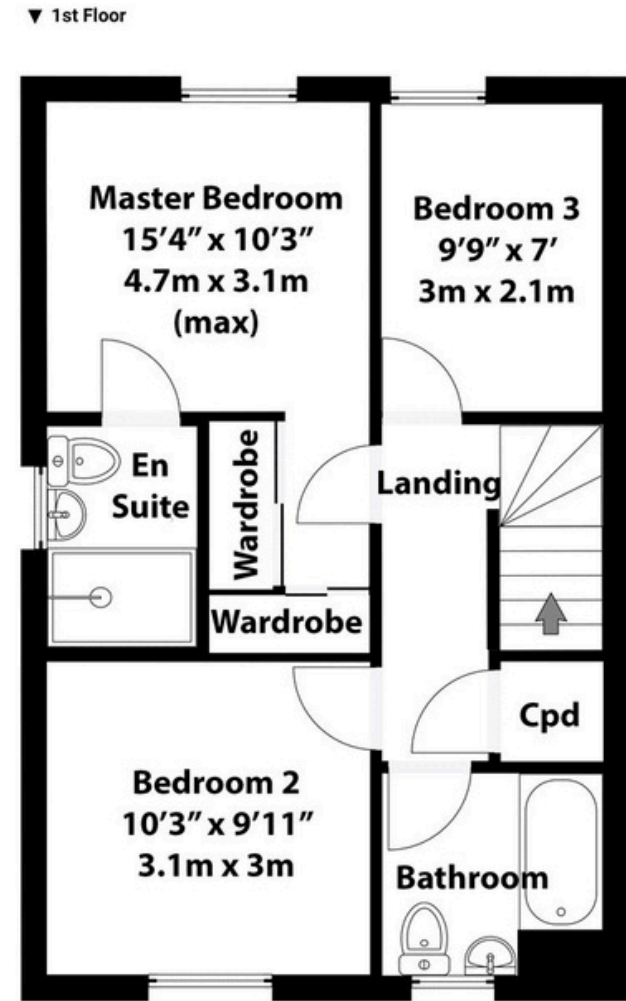
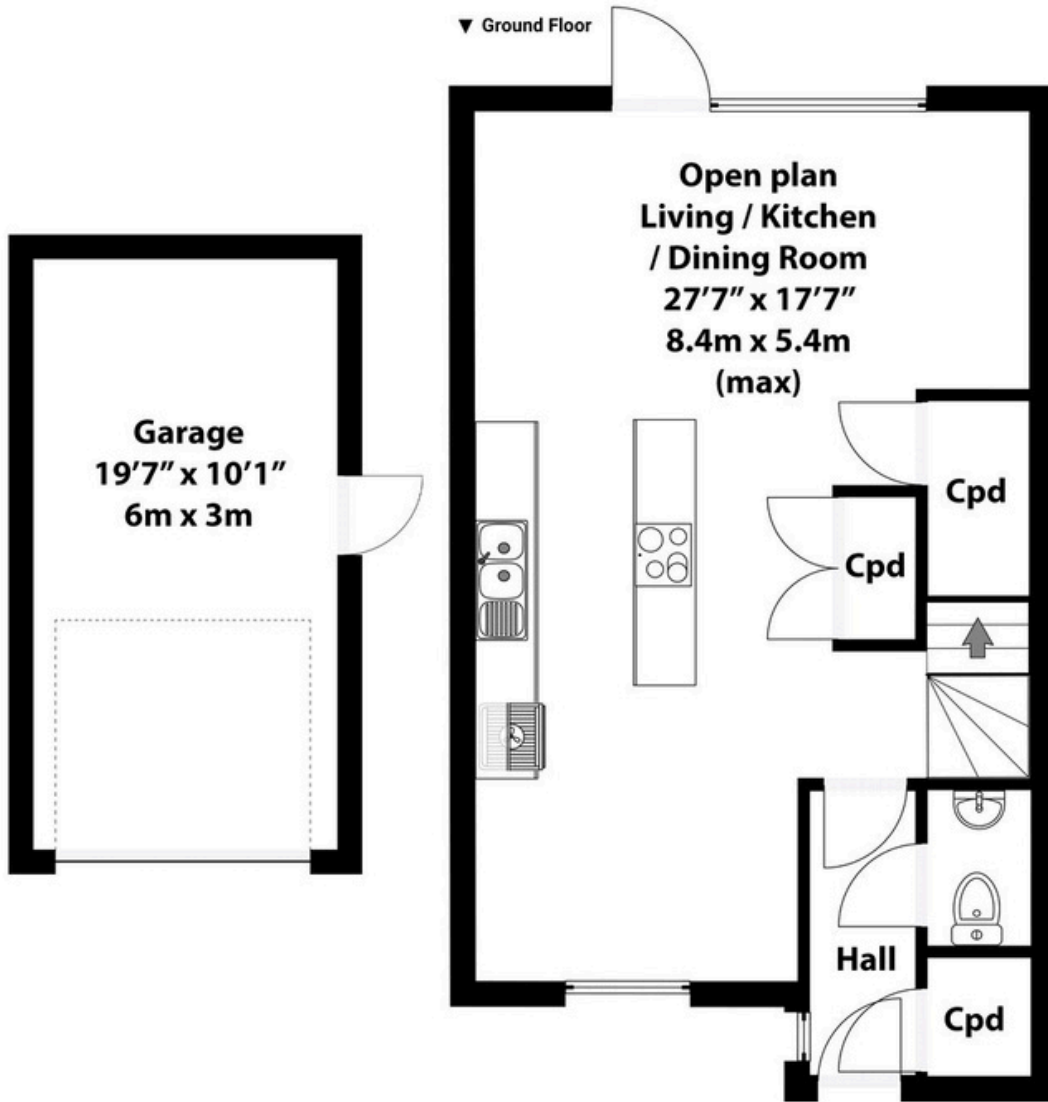
Generous
bedrooms





The location is a big plus, with both primary and secondary schools within walking distance, along with local amenities including Sainsbury's Tadpole Garden Village and the popular Strawberry Thief Pub.

A great option for anyone looking for a modern home in a well connected and family friendly area.



Total area approx: 1138 sq ft / 106 sq m
(Includes garage)

N.B. Whilst care has been taken with this floor plan to reflect an accurate likeness of the property it should only be used as an approximation for illustrative purposes only, specifically no guarantee is given and all should not be relied on solely as a basis of valuation. Plan not to scale.

01793 311 039

isobelbowles@richardjames.uk

richardjames.uk

