



Connells

Whitleigh Green
Plymouth



Property Description

An exciting opportunity to add value and acquire this two bedroom end of terrace home, situated in the popular location of Whitleigh. Benefiting from two double bedrooms, kitchen/dining room, lounge, shower and large south-facing rear garden.

As you enter this home, you are welcomed with the lounge, followed by a spacious kitchen/dining room with double patio doors leading directly out to a large south-facing rear garden.

On the first floor, you will find two good-sized double bedrooms and a family shower room comprising walk-in shower, hand basin and W.C.

This property offers a huge potential to add value and will appeal to a wide range of buyers.

BOOK YOUR VIEWINGS NOW!

An exciting opportunity to add value and acquire this two bedroom end of terrace home, situated in the popular location of Whitleigh. Benefiting from two double bedrooms, kitchen/dining room, lounge, shower and large south-facing rear garden.

As you enter this home, you are welcomed with the lounge, followed by a spacious kitchen/dining room with double patio doors leading directly out to a large south-facing rear garden.

On the first floor, you will find two good-sized

double bedrooms and a family shower room comprising walk-in shower, hand basin and W.C.

This property offers a huge potential to add value and will appeal to a wide range of buyers.

BOOK YOUR VIEWINGS NOW!

An exciting opportunity to add value and acquire this two bedroom end of terrace home, situated in the popular location of Whitleigh. Benefiting from two double bedrooms, kitchen/dining room, lounge, shower and large south-facing rear garden.

As you enter this home, you are welcomed with the lounge, followed by a spacious kitchen/dining room with double patio doors leading directly out to a large south-facing rear garden.

On the first floor, you will find two good-sized double bedrooms and a family shower room comprising walk-in shower, hand basin and W.C.

This property offers a huge potential to add value and will appeal to a wide range of buyers.

BOOK YOUR VIEWINGS NOW!

An exciting opportunity to add value and acquire this two bedroom end of terrace home, situated in the popular location of Whitleigh. Benefiting from two double bedrooms, kitchen/dining room, lounge,

shower and large south-facing rear garden.

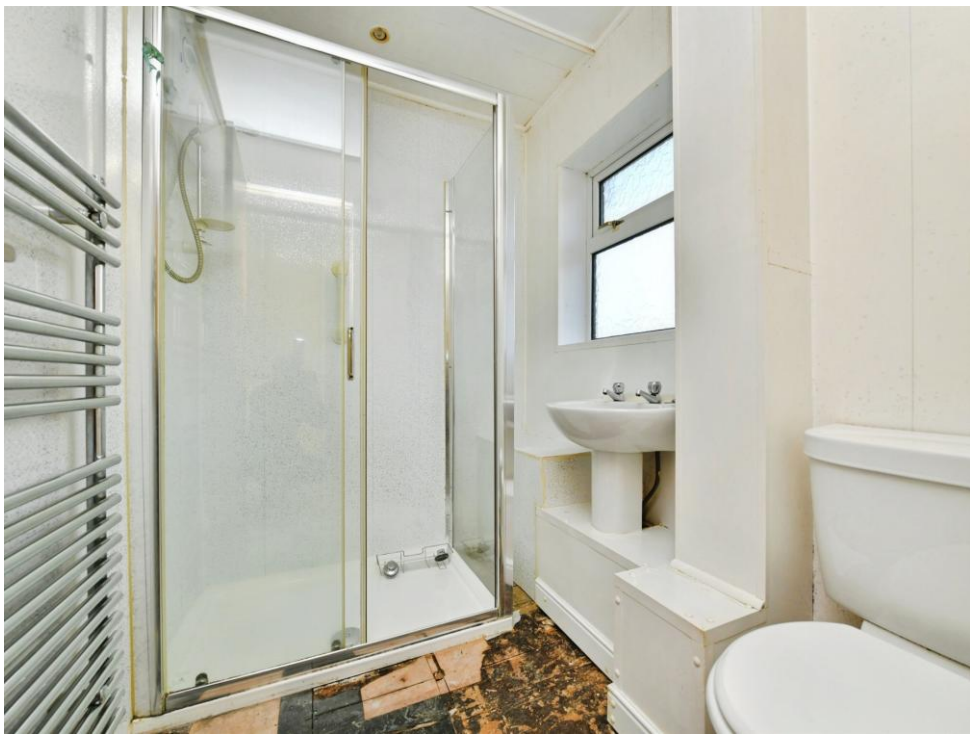
As you enter this home, you are welcomed with the lounge, followed by a spacious kitchen/dining room with double patio doors leading directly out to a large south-facing rear garden.

On the first floor, you will find two good-sized double bedrooms and a family shower room comprising walk-in shower, hand basin and W.C.

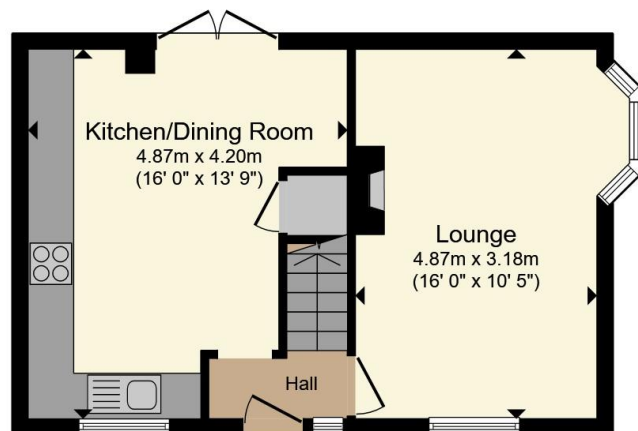
This property offers a huge potential to add value and will appeal to a wide range of buyers.

BOOK YOUR VIEWINGS NOW!

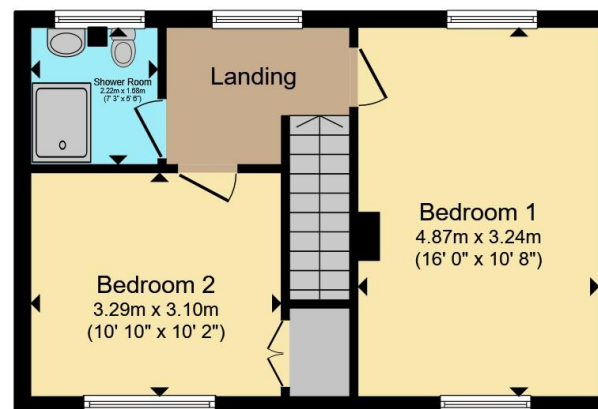








Ground Floor



First Floor

Total floor area 73.4 m² (790 sq.ft.) approx

This floor plan is for illustrative purposes only. It is not drawn to scale. Any measurements, floor areas (including any total floor area), openings and orientation are approximate. No details are guaranteed, they cannot be relied upon for any purpose and they do not form part of any agreement. No liability is taken for any error, omission or misstatement. A party must rely upon its own inspection(s). Powered by www.propertybox.io

Connells

To view this property please contact Connells on

T 01752 674 467
E plymouth@connells.co.uk

32 Mannamead Road
PLYMOUTH PL4 7AA

EPC Rating: D Council Tax
Band: A

Tenure: Freehold

view this property online connells.co.uk/Property/PLH313254



1. MONEY LAUNDERING REGULATIONS Intending purchasers will be asked to produce identification documentation at a later stage and we would ask for your co-operation in order that there will be no delay in agreeing the sale. 2. These particulars do not constitute part or all of an offer or contract. 3. The measurements indicated are supplied for guidance only and as such must be considered incorrect. Potential buyers are advised to recheck measurements before committing to any expense. 4. We have not tested any apparatus, equipment, fixtures, fittings or services and it is in the buyers interest to check the working condition of any appliances.

Connells Residential is registered in England and Wales under company number 1489613, Registered Office is Cumbria House, 16-20 Hockliffe Street, Leighton Buzzard, Bedfordshire, LU7 1GN. VAT Registration Number is 500 2481 05.

See all our properties at www.connells.co.uk | www.rightmove.co.uk | www.zoopla.co.uk

Property Ref: PLH313254 - 0002