

6 Fulham High Street
London
SW6 3JY



6 Fulham High Street

£2,100 Per Month

The property offers bright and airy accommodation throughout and comprises a spacious reception room with ample space for dining table, a semi-open-plan kitchen with modern units and a generous double bedroom with built-in storage, and a bathroom. Situated on the second floor, the flat benefits from good natural light and a pleasant outlook at the front of the property towards Bishops Park and the river.

A vibrant and highly desirable location, offering a blend of local convenience stores and just a short distance from Putney Bridge Station and local bus routes. Further local shops and restaurants are close by on Putney High Street and New King's Road. The area also benefits from access to scenic river walks, and the green spaces of Bishops Park, with various fitness and recreational facilities close by.

All measurements have been taken as a guide to prospective tenants only, and are not precise. Photographs are provided for general information, and it cannot be inferred that any item shown is included in any letting. Some images have been virtually staged to better showcase the true potential of rooms. If you require clarification or further information on any points, please contact us, especially if you are traveling some distance to view.

Local Authority

London Borough of Hammersmith and Fulham

Council Tax Band D

EPC Rating C



Contact

0208 994 5164

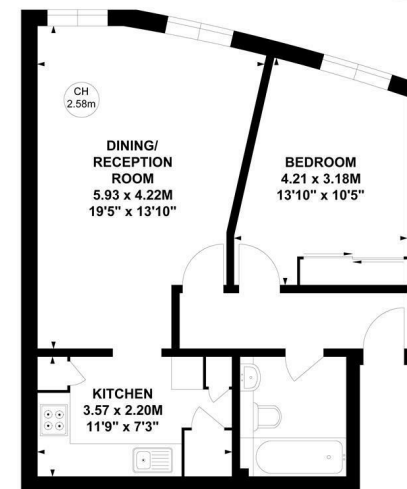
karen@xppm.co.uk

xppm.co.uk

Frederick Court, SW6

Approximate gross internal area
50.59 sq m / 555 sq ft

Key:
CH - Ceiling Height



Second Floor

Not to scale, for guidance only and must not be relied upon as a statement of fact.
All measurements and areas are approximate only