



turners



Garden Flat, Larkstone Crescent

Ilfracombe, EX34 9PJ

Price Guide £170,000



Well-presented two double bedroom ground floor flat with level access and dual aspect open-plan living. Perfect for anyone seeking a bungalow style property, no onward chain, parking and garden



Property Description

A well-presented two double bedroom ground floor flat, ideal for those seeking the ease and convenience of bungalow-style living. Benefiting from a level entrance and pleasant views to both the front and rear this property offers comfortable, low-maintenance accommodation in a desirable location, and is available with no onward chain.

A private entrance hall with an internal porch leads into the main living space. The heart of the home is a bright and spacious dual aspect open-plan lounge/kitchen/diner enjoy ample amounts of natural light. The fitted kitchen comprises a range of wall and base units with space for white goods and a breakfast bar, while the lounge and dining area provide a welcoming and versatile space with views to the rear.

There are two well-proportioned double bedrooms with the rear bedroom benefiting from a fitted storage cupboard and a double wardrobe. The bathroom is fitted with a three-piece suite including a bath with shower attachment over, wash hand basin, WC, full wall tiling, and a heated towel radiator. To the front is a low-maintenance paved patio garden along with tarmac driveway parking for one vehicle.

Perfectly positioned on the edge of Ilfracombe town, with beach access to Larkstone Cove this property is an excellent choice for a range of buyers.

Location

Ilfracombe town offers a variety of independent shops, art galleries, restaurants and bars. The picturesque seafront and harbour area is home to artist Damien Hirst's 'Verity' statue at the harbour entrance. In addition is the exciting new water sports centre and café making the harbour a hive of activity.

North Devon has a wealth of simply stunning golden sand beaches and has long been a mecca for British surfers. The area has recently been declared a 'world surfing reserve', one of just 12 places on the planet along with Australia's Golden Coast and Malibu in California.

Agent Notes

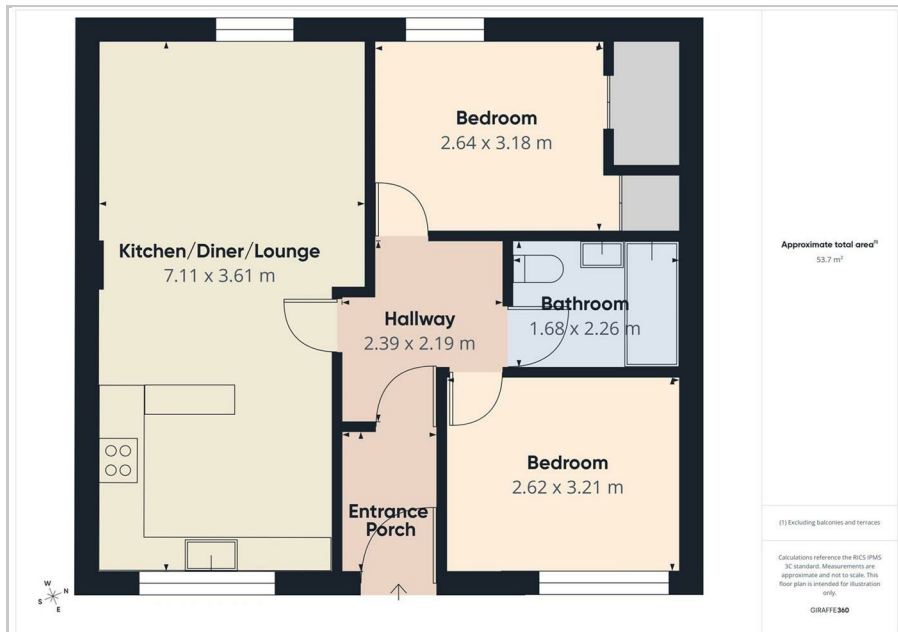
- Bungalow style property
- No ground rent or service charge
- Non-traditional construction

Directions

From our office head north-east on the High Street following directions towards the leisure centre/A399 passing through the traffic lights. Continue for a short distance passing the Thatch pub on the right-hand side, take the next right hand turning into Chambercombe Road and the 2nd right hand turning into Larkstone Crescent, continue for a short distance where the property will be located on the right-hand side with name plate and for sale board clearly displayed.

What3words - host.yoga.bless

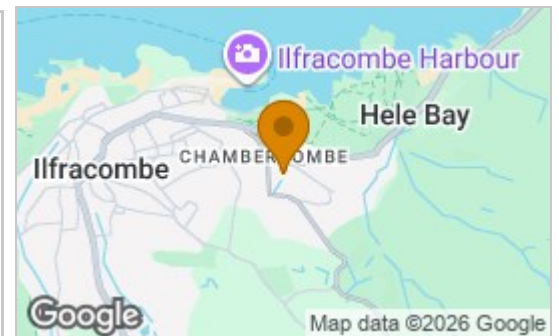
Floor Plans



These particulars, whilst believed to be accurate are set out as a general outline only for guidance and do not constitute any part of an offer or contract. Intending purchasers should not rely on them as statements of representation of fact, but must satisfy themselves by inspection or otherwise as to their accuracy. No person in this firm's employment has the authority to make or give any representation or warranty in respect of the property.

135 High Street, Ilfracombe, Devon, EX34 9EZ
 Tel: 01271 866421
 Email: sales@turnerspropertycentre.co.uk
<https://www.turnerspropertycentre.co.uk>

Area Map



Energy Efficiency Graph

