

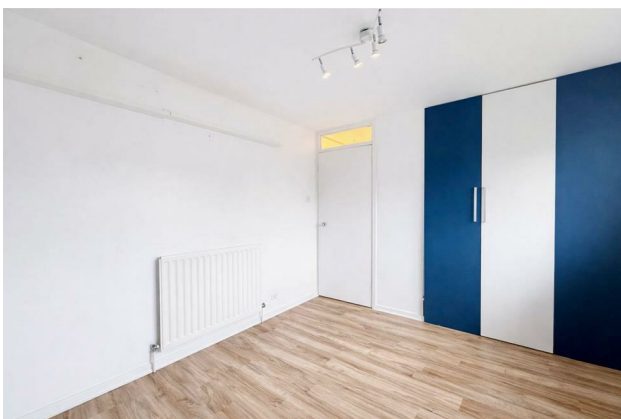
HUNTERS®

HERE TO GET *you* THERE

6 Petersham Close, Sutton, SM1 2SZ

£2,300 Per Month

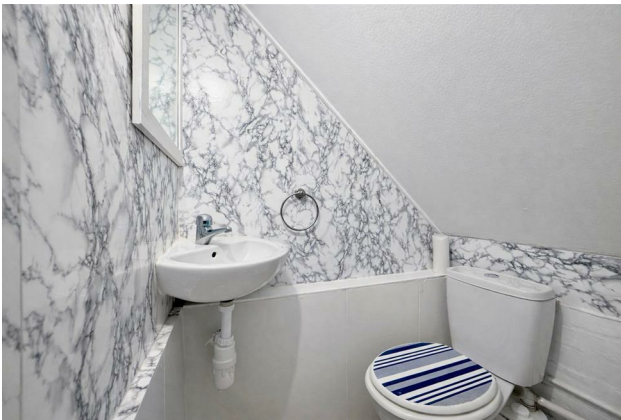
Property Images



HUNTERS[®]

HERE TO GET *you* THERE

Property Images



HUNTERS[®]

HERE TO GET *you* THERE

Property Images

EPC

Energy Efficiency Rating		
	Current	Potential
Very energy efficient - lower running costs		
(92 plus) A		87
(81-91) B		
(69-80) C	73	
(55-68) D		
(39-54) E		
(21-38) F		
(1-20) G		
Not energy efficient - higher running costs		
England & Wales		EU Directive 2002/91/EC

Map



Details

Type: House - Mid Terrace Beds: 3 Bathrooms: 1 Receptions: 1 Tenure:

Summary

Petersham Close, Sutton, this delightful mid-terrace house offers a perfect blend of comfort and convenience. The property boasts three well-proportioned bedrooms, making it an ideal home for families or those seeking extra space.

Upon entering, you are welcomed into a spacious reception room that provides a warm and inviting atmosphere, perfect for both relaxation and entertaining. The layout flows seamlessly, allowing for easy movement throughout the home. The kitchen, while not specified, is likely to be functional and well-suited for everyday cooking needs.

The property features a well-maintained bathroom, ensuring that all essential amenities are readily available. One of the standout features of this home is the front and rear gardens, offering outdoor space for gardening enthusiasts or simply a tranquil area to enjoy the fresh air.

With its proximity to local amenities and transport links, this property is not only a comfortable residence but also a practical choice for daily life.

In summary, this three-bedroom mid-terrace house on Petersham Close is a fantastic opportunity for anyone seeking a spacious and inviting home in Sutton. With its gardens and ample living space, it is sure to appeal to a variety of buyers. Do not miss the chance to make this lovely property your own.

Features

- Available Now • Viewings Highly recommended • 3 bed house • Lounge/Diner • Utility Room • Downstairs WC • Side access to the garden • Bright and spacious end of terrace house