

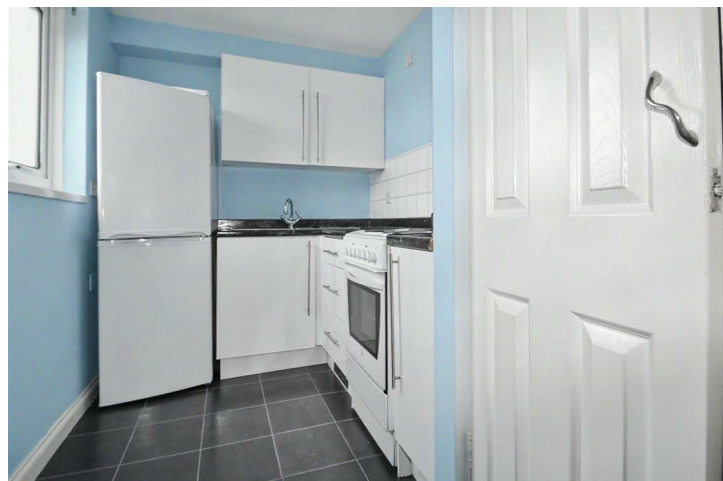
26 Oldfield, Clevedon, North Somerset, BS21 5DQ











£700 Per Calendar Month

marktempler

RESIDENTIAL LETTINGS





 PROPERTY TYPE Studio	 LOCATION Lower Clevedon
 BEDROOMS 0	 RECEPTION ROOMS 0
 BATHROOMS 1	 WARMTH Electric Heating
 PARKING One allocated space	 OUTSIDE SPACE None here
 EPC RATING D	 COUNCIL TAX BAND A

Delightful first floor studio apartment
Well planned bedsitting room
accommodation
Holding deposit - £161.53
Security deposit - £807.69
EPC Rating - D
Council tax band - A

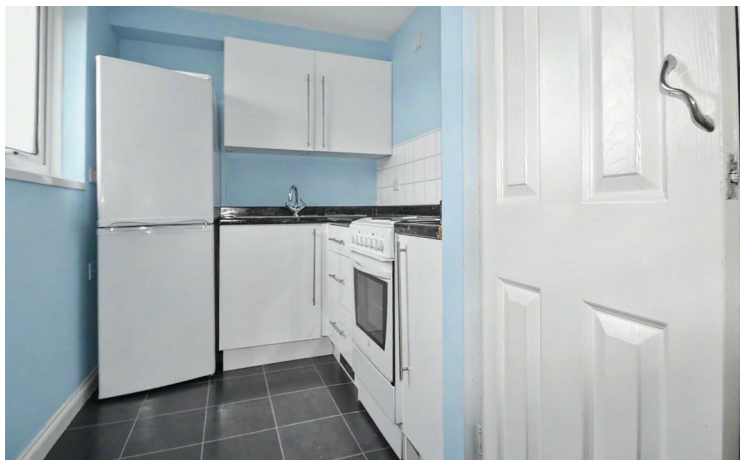
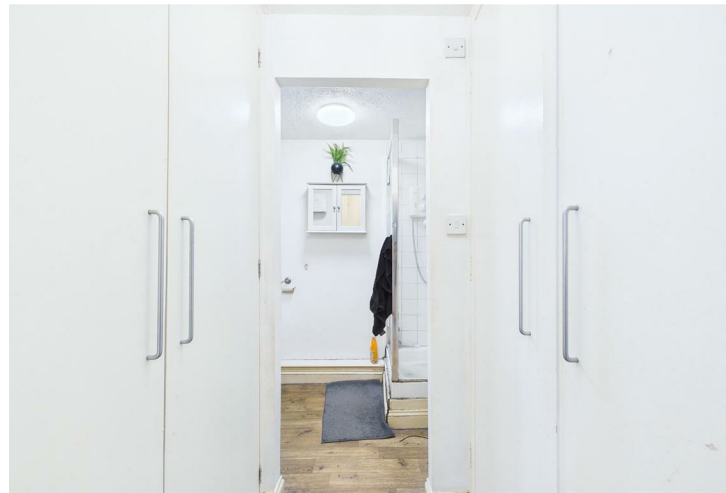
What will it cost to rent this property?

When you submit a completed application form, we will discuss the details with the Landlord. If the Landlord is happy to proceed you will be required to pay:

1. Holding deposit, equivalent to 1 week's rent. This will reserve the property.

Once references are complete, you will be asked to pay:

2. First month's rent
3. Security deposit, equivalent to 5 weeks' rent (for rents under £50,000 per year). This covers damages or defaults on the part of the tenant during the tenancy.



Modern fitted kitchen with cooker and use of fridge and washing machine

Contemporary shower room with electric shower

Lovely position very close to the river path with delightful walks along the Blind Yeo River

Available From:

This property is available to move into from approximately 19th June 2026



Utilities

Mains water and drainage, Mains electric supply, Electric heating. This information has been provided by the Landlord and is correct to the best of our knowledge

Broadband
Ultrafast broadband available with highest available download speed 1000 Mbps and highest available upload speed 100 Mbps. This information is sourced via checker.ofcom.org.uk, we advise you make your own enquires

Mobile Phone Signal/Coverage

You are likely to have coverage indoor and outside the property with a range of providers. This information is sourced via checker.ofcom.org.uk, we advise you make your own enquires

For the latest properties and local news follow Mark Templer Residential Lettings on:



