



St. Nicholas Estate, Baddesley, Ensor, Atherstone





Property Description

This fantastic renovation opportunity has lots of potential- offering a spacious lounge on the ground floor in addition to a kitchen overlooking the large rear garden, the home also has two bedrooms and a bathroom upstairs. The views are really special here with the home looking out onto countryside.

The property is located in a quiet but well connected village with excellent access to the A5 and beyond. Call us today for more information and to see inside!

Auctioneer's Comments

This property is offered through Modern Method of Auction. Should you view, offer or bid your data will be shared with the Auctioneer, iamsold Limited. This method requires both parties to complete the transaction within 56 days, allowing buyers to proceed with mortgage finance (subject to lending criteria, affordability and survey).

The buyer is required to sign a reservation agreement and make payment of a non-refundable Reservation Fee of 4.5% of the purchase price including VAT, subject to a minimum of £6600.00 including VAT. This fee is paid in addition to purchase price and will be considered as part of the chargeable consideration for the property in the calculation for stamp duty liability. Buyers will be required to complete an identification process with iamsold and provide proof of how the purchase would be funded.

The property has a Buyer Information Pack containing documents about the property. The documents may not tell you everything you need to know, so you must complete your own due diligence before bidding. A sample of the Reservation Agreement and terms and conditions are contained within this pack. The buyer will also make payment of no more than £349 inc. VAT towards the preparation cost of the pack. Please confirm exact costs with the auctioneer.

The estate agent and auctioneer may recommend the services of other providers to you, in which they will be paid for the referral. These services are optional, and you will be advised of any payment, in writing before any services are accepted. Listing is

subject to a start price and undisclosed reserve price that can change.

Lounge

Windows to front and rear elevations and two central heating radiators.

Kitchen

Window to rear elevation, door to side elevation, a range of wall and base units with work surface over incorporating a sink with drainer unit, space and connections for gas cooker.

Bedroom One

Two single glazed windows to front elevation, central heating radiator and over stairs storage cupboard housing central heating boiler.

Bedroom Two

Window to rear elevation and central heating radiator.

Separate W.C

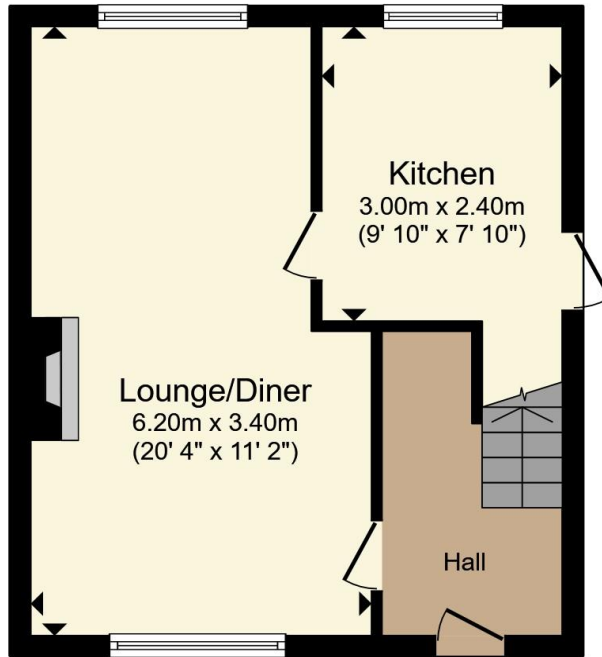
Window to side elevation and W.C.

Bathroom

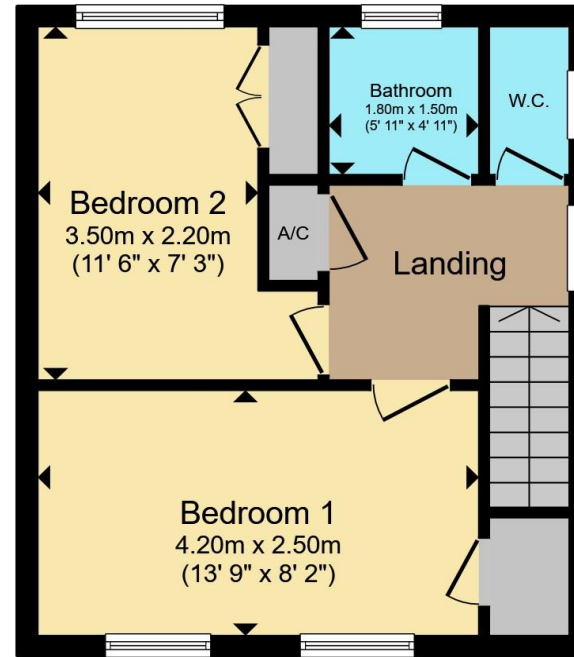
Window to rear elevation, panelled bath, wash hand basin, central heating radiator.







Ground Floor



First Floor

Total floor area 81.7 m² (880 sq.ft.) approx

This floor plan is for illustrative purposes only. It is not drawn to scale. Any measurements, floor areas (including any total floor area), openings and orientation are approximate. No details are guaranteed, they cannot be relied upon for any purpose and they do not form part of any agreement. No liability is taken for any error, omission or misstatement. A party must rely upon its own inspection(s). Powered by www.propertybox.io



To view this property please contact Burchell Edwards on

T 01827 66400
E tamworth@burchelledwards.co.uk

1 Bolebridge Street
 TAMWORTH B79 7PA

EPC Rating: D Council Tax
 Band: A

Tenure: Freehold

view this property online burchelledwards.co.uk/Property/TAM207505



1. MONEY LAUNDERING REGULATIONS Intending purchasers will be asked to produce identification documentation at a later stage and we would ask for your co-operation in order that there will be no delay in agreeing the sale. 2. These particulars do not constitute part or all of an offer or contract. 3. The measurements indicated are supplied for guidance only and as such must be considered incorrect. Potential buyers are advised to recheck measurements before committing to any expense. 4. We have not tested any apparatus, equipment, fixtures, fittings or services and it is in the buyers interest to check the working condition of any appliances.

Burchell Edwards is a trading name of Connells Residential which is registered in England and Wales under company number 1489613, Registered Office is Cumbria House, 16-20 Hockliffe Street, Leighton Buzzard, Bedfordshire, LU7 1GN. VAT Registration Number is 500 2481 05.

See all our properties at www.burchelledwards.co.uk | www.rightmove.co.uk | www.zoopla.co.uk

Property Ref: TAM207505 - 0004