



Richmond Way, Maidstone, Kent, ME15 6BL
Guide Price £300,000

NO FORWARD CHAIN AND CASH BUYERS ONLYIMMACULATELY RENOVATED BUNGALOW IN A SOUGHT AFTER RESIDENTIAL DEVELOPMENT IN THE POPULAR VILLAGE OF LOOSE

GUIDE PRICE £300,000 TO £325,000

Nestled in the charming village of Loose, Maidstone, this beautifully renovated two-bedroom bungalow offers modern living in a picturesque setting. Finished to an exceptional standard, the property boasts brand-new electrics, a new boiler, and fresh plastering throughout. Stylish new flooring complements the contemporary fitted kitchen, complete with integrated appliances—including a dishwasher. The sleek new shower room provides a touch of luxury, while a brand-new roof ensures peace of mind for years to come.

French doors open onto a beautifully landscaped west-facing garden, featuring a raised decked area and lush lawns—perfect for relaxation and entertaining. The sought-after location of Loose offers stunning countryside walks through the scenic Loose Valley, while local amenities, including a Sainsbury's Local, are just a short stroll away.

A fantastic opportunity to own a turnkey bungalow in a desirable village setting. Arrange a viewing today!



Entrance Hall

Lounge/Dining Room/Kitchen 31'0" x 11'5" (9.46m x 3.49m)

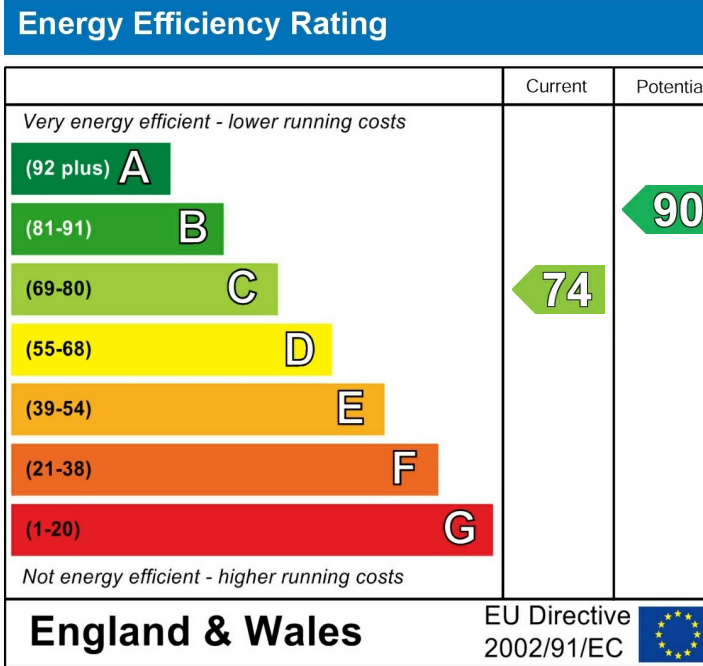
Bedroom 1 11'1" x 10'8" (3.39m x 3.27m)

Bedroom 2 10'9" x 9'2" (3.29m x 2.81m)

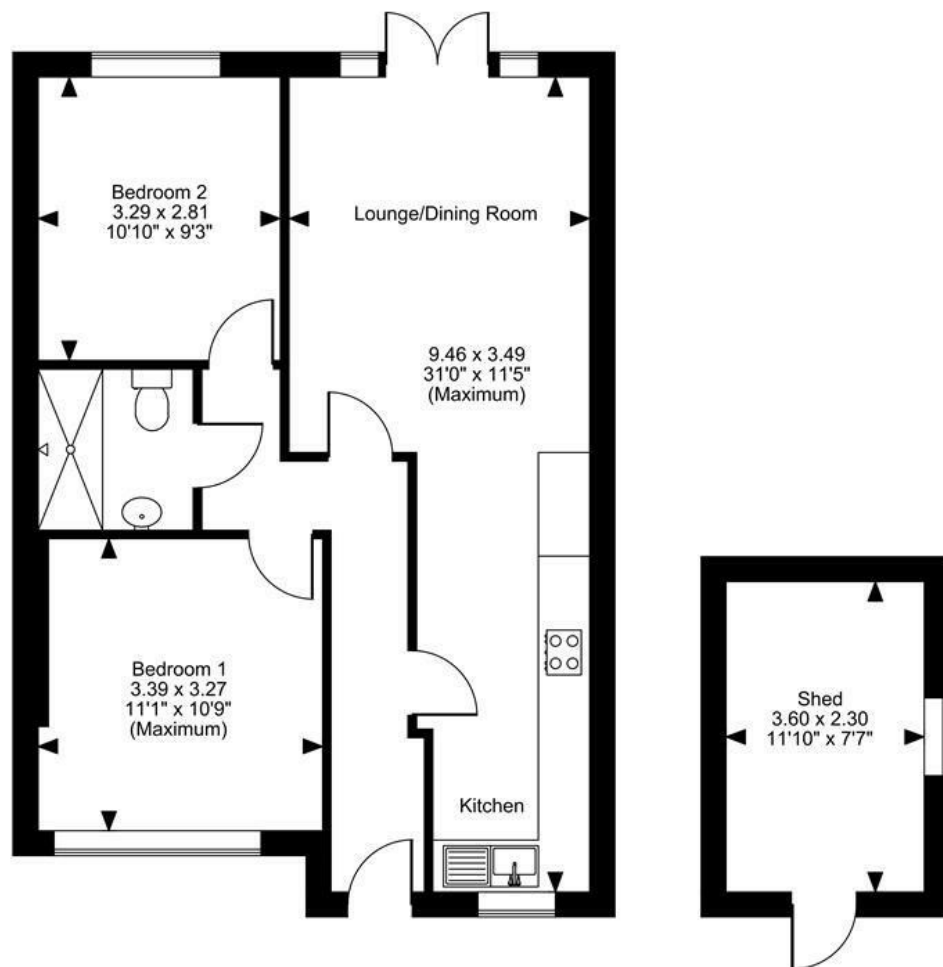
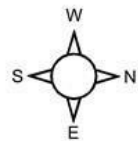
Bathroom

EXTERNALLY

Shed 11'9" x 7'6" (3.60m x 2.30m)



Richmond Way, Maidstone
 Approximate Gross Internal Area
 Main House = 626 Sq Ft/58 Sq M
 Shed = 89 Sq Ft/8 Sq M
 Total = 715 Sq Ft/66 Sq M



FOR ILLUSTRATIVE PURPOSES ONLY - NOT TO SCALE

The position & size of doors, windows, appliances and other features are approximate only.

© ehouse. Unauthorised reproduction prohibited. Drawing ref. dig/8641825/LCO

