



Roupell Street

London, SE1

£6,000 per month
(£1,384.62 per week)

A stunning three bedrooms house renovated to a high standard is now available to rent on Roupell Street.

CHESTERTONS



Roupell Street

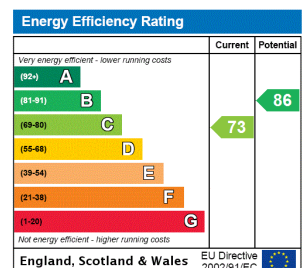
London, SE1

- THREE BEDROOMS
- FURNISHED
- GARDEN
- IMMACULATE
- HOUSE
- GRADE II LISTED



A stunning three bedrooms house renovated to a high standard is now available to rent on Roupell Street. Roupell Street is part of a highly desirable area in SE1, where period properties so close to the River Thames are rare. It's just a short walk to the vibrant South Bank, with Waterloo and Southwark Underground stations nearby, providing easy access to The City and West End via Waterloo Bridge.

Minimum Term: 2 months
Deposit Required: £6,923.08
Local Authority: London Borough of Southwark
Council Tax Band: F
EPC Rating: C
Furnished



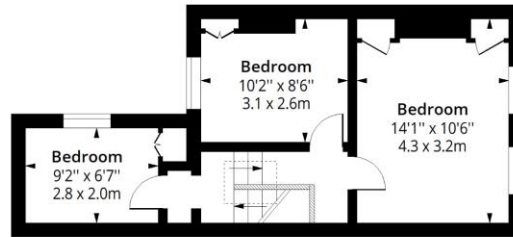
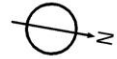
Chestertons Tower Bridge Lettings

220 Tower Bridge Road
 Tower Bridge
 London
 SE1 2UP
 towerbridgelettingsusers@chestertons.co.uk
 02073576911
 chestertons.co.uk

Additional tenant charges apply (fees apply to non-AST tenancies only)
 Tenancy Agreement Fee: £300
 References per Tenant/Guarantor: £60
 Inventory check (approx. £100 – £250 inc. VAT)
 chestertons.co.uk/property-to-rent/applicable-fees

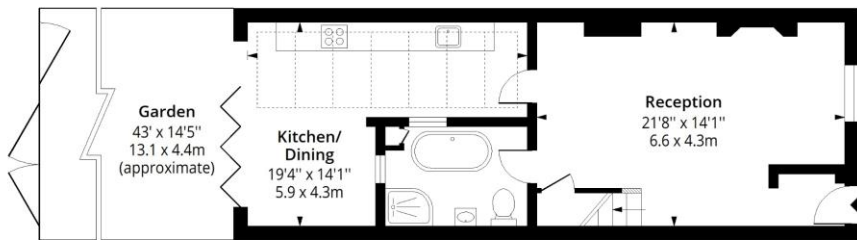
Roupell Street, SE1

Approx. Gross Internal Area 964 Sq Ft - 89.55 Sq M



First Floor

Floor Area 381 Sq Ft - 35.39 Sq M



Ground Floor

Floor Area 583 Sq Ft - 54.16 Sq M



Measured according to RICS IPMS2. Floor plan is for illustrative purposes only and is not to scale. Every attempt has been made to ensure the accuracy of the floor plan shown, however all measurements, fixtures, fittings and data shown are an approximate interpretation for illustrative purposes only. 1 sq m = 10.76 sq feet.

lpaplus.com

Date: 4/10/2024

