

Rhodes Way, Billingshurst

Offers Over £535,000

4 2 2



A beautifully presented Detached Family Home built in 2019, boasting a South Facing Garden, wonderful 24ft Kitchen Diner, 4/5 Generous Bedrooms and a Study/Family Room which adds excellent flexibility.

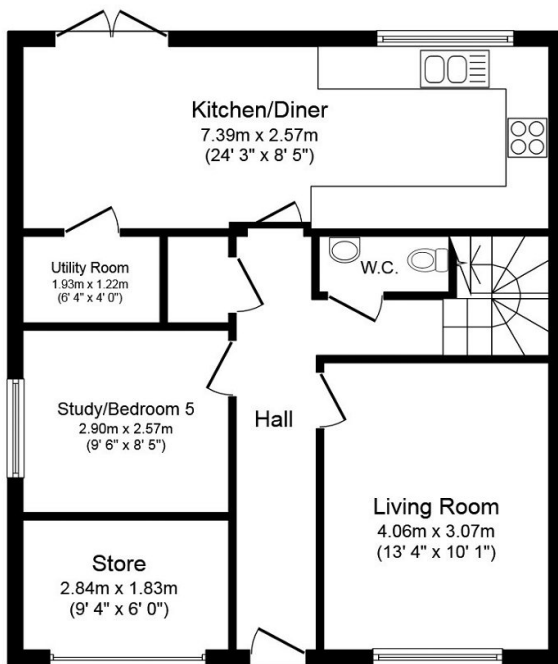
Tenure: Freehold

EPC Rating: Current 84 - Potential 94

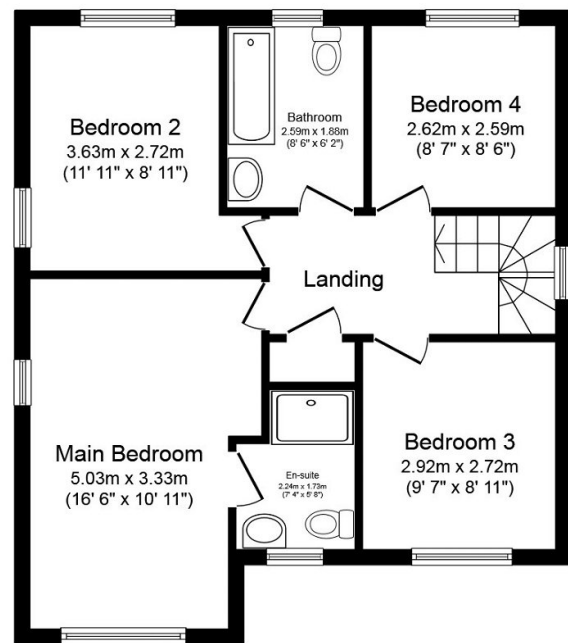
Council Tax Band: F

Key Features

- Four/Five Generous Bedrooms
- 24ft Kitchen Diner
- Utility Room & WC
- Driveway & Garage/Store
- En Suite To Master Bedroom
- Impressive Detached Family Home
- South Facing Rear Garden
- Study/Bedroom Five
- Popular Village Location
- Luxurious Family Bathroom



Ground Floor



First Floor

Total floor area 120.1 m² (1,293 sq.ft.) approx

This plan is for illustration purposes only and may not be representative of the property. Plan not to scale. Powered by PropertyBox