

Healey Close, Rugby, CV21 1NE

Offers Over £400,000

4 2 2

**Beautifully Updated Four-Bedroom Detached Family Home | Healy Close, Rugby | Guide Price £400,000****The Property**

Louise Owen is delighted to bring to the market this superb four-bedroom detached family home, tucked away within the highly sought-after and peaceful cul-de-sac of Healy Close – a true hidden oasis just minutes from Rugby Railway Station and excellent commuter links and retail park.

LOUISE OWEN



@louise.owen@exp.uk.com

 louiseowen.exp.uk.com

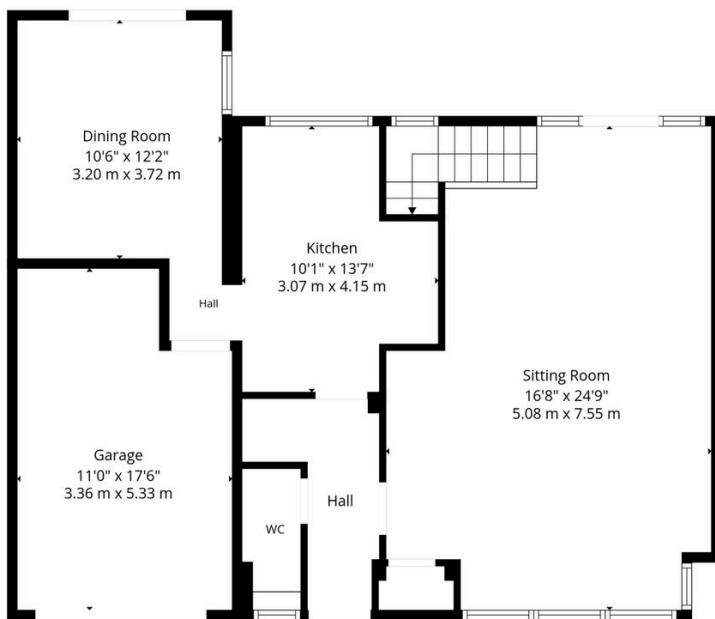
 07774 122 959

Lovingly updated and significantly improved by the current owners over recent years, this spacious family home offers over 1,650 sq ft of beautifully presented accommodation, perfectly suited to modern family living.

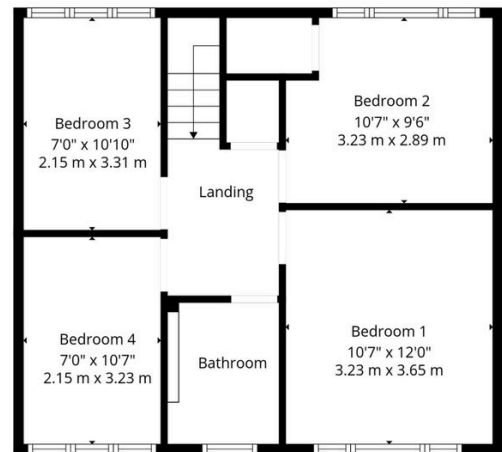
Booking a viewing - Quote LO 0765

Key Features

- Detached Family Home
- Excellent condition Throughout
- Garage and Parking
- Close to local schools
- New UPVC windows
- Four Bedrooms
- Re Fitted bathrooms and kitchen
- Private landscaped rear gardens
- Modern decor throughout
- Property Ref LO 0765



Ground Floor



1st Floor

Total: 1265 sq. Ft, 118 m2
 Ground Floor: 741 sq. Ft, 69 M2, 1st Floor: 524 sq. Ft, 49 m2
 Excluded Areas: Garage: 177 sq. Ft, 16 M2, Walls: 128 sq. Ft, 12 m2

Floor Plan Created By Harper & Reid. Measurements Deemed Highly Reliable But Not Guaranteed

