



6 Annis Court Newlands, Pershore

Guide Price **£225,000**

**SHELDON
BOSLEY
KNIGHT** LAND AND
PROPERTY
PROFESSIONALS



6 Annis Court Newlands

Pershore

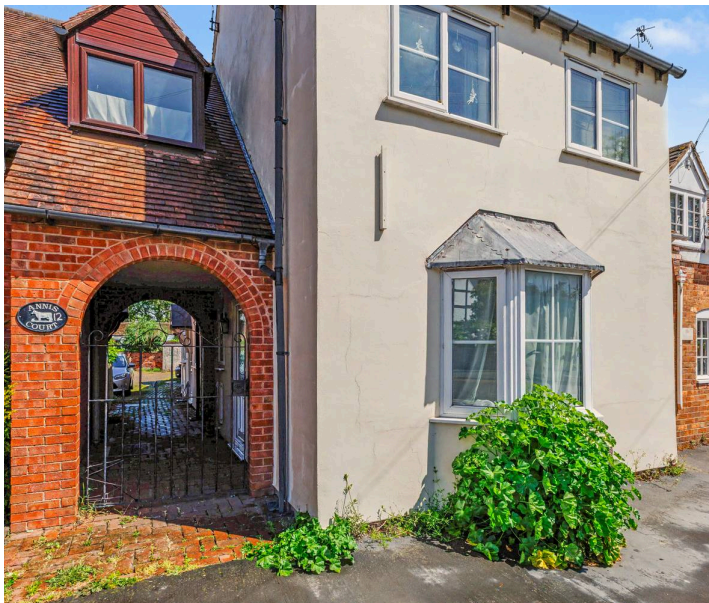
Council Tax band: B

Tenure: Freehold

EPC Energy Efficiency Rating: D

EPC Environmental Impact Rating: E

- Three-bedroom terraced home
- Spacious top floor principal bedroom
- Bay-fronted lounge with feature fireplace
- Approx. 772 sq. ft. (71.7 sq. m.) of accommodation
- Popular Newlands development
- Convenient for local amenities and transport links
- Ideal first-time buy, investment, or downsizer property

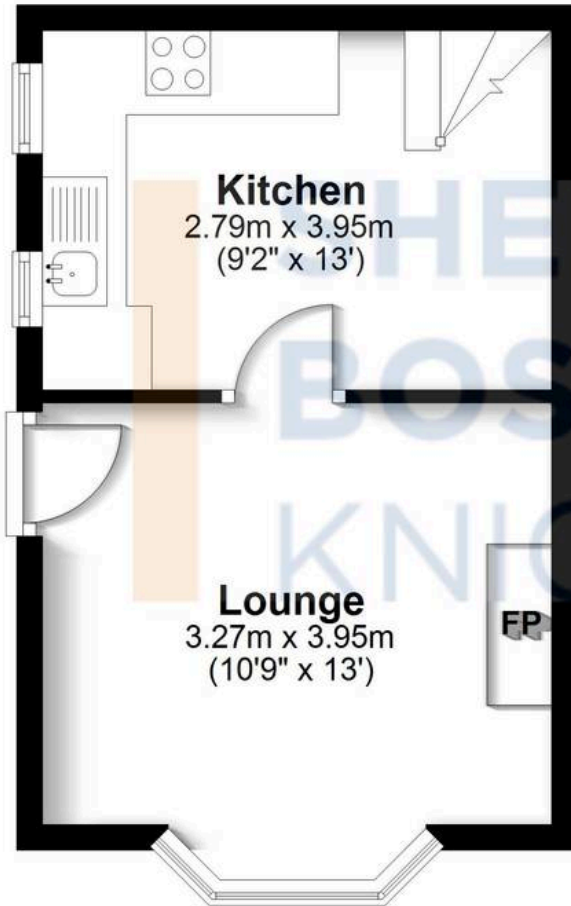






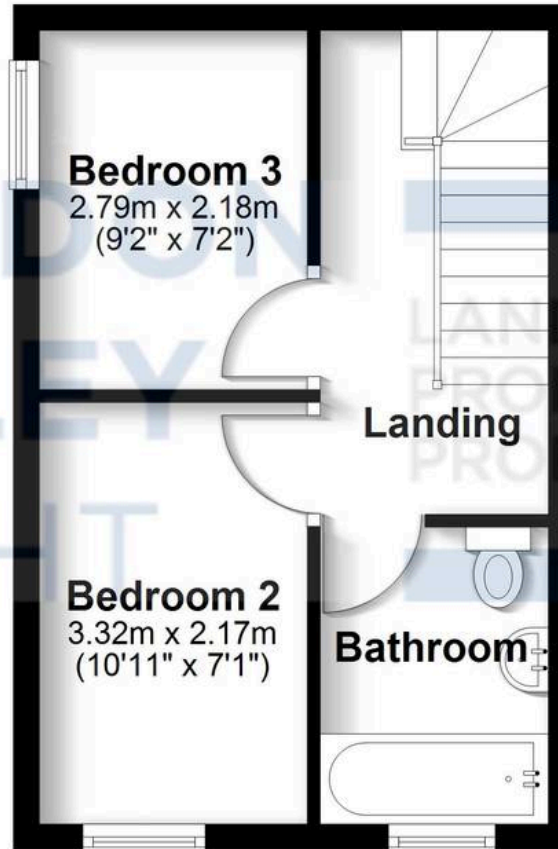
Ground Floor

Approx. 24.6 sq. metres (264.5 sq. feet)



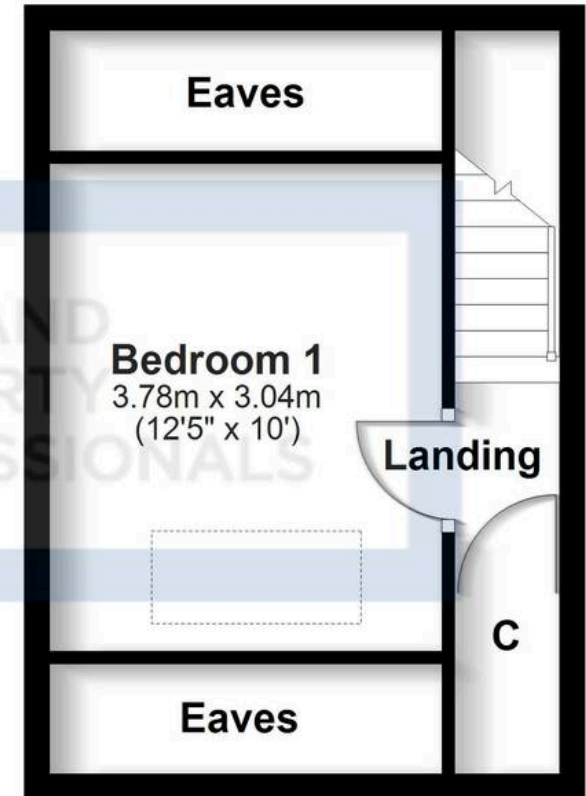
First Floor

Approx. 24.4 sq. metres (262.9 sq. feet)



Second Floor

Approx. 22.8 sq. metres (244.9 sq. feet)



Total area: approx. 71.7 sq. metres (772.3 sq. feet)

All efforts have been made to ensure the measurements are accurate on this floor plan, however these are for guidance purposes only.

Plan produced using PlanUp.



Sheldon Bosley Knight Evesham & Pershore

Sheldon Bosley Knight, 1 Bridge Street, Evesham - WR11 4SQ

01386444900 · eveshamsales@sheldonbosleyknight.co.uk · www.sheldonbosleyknight.co.uk/

DISCLAIMER

All fixtures and fittings mentioned in these particulars are included in the sale, all others in the property are specifically excluded.

Photographs are reproduced for general information and it must not be inferred that any item is included for sale with the property.

These particulars are thought to be materially correct. Their accuracy is not guaranteed and they do not form part of any contract.