



CAROLINE PLACE, W2

£3,250,000

Private Garage
Freehold House
Four Bedrooms
Conservatory
Private Garden
Study & Utility Rooms

@marshandparsons
marshandparsons.co.uk

MARSH &
PARSONS

ABOUT THE PROPERTY

An exceptional family home extending to over 3,000 sqft (including garage), set within a quiet, sought-after cul-de-sac just moments from the open spaces of Kensington Gardens and Hyde Park. Impressive in both scale and character, the property offers generous proportions throughout, with a wide frontage and an abundance of well-considered entertaining space.

The accommodation includes a substantial principle suite alongside three further bedrooms and a family bathroom, arranged across the first and second floors. The ground & lower ground floor are further enhanced by a separate study, a utility room, a conservatory, and a dedicated TV and games room with an adjoining third bathroom

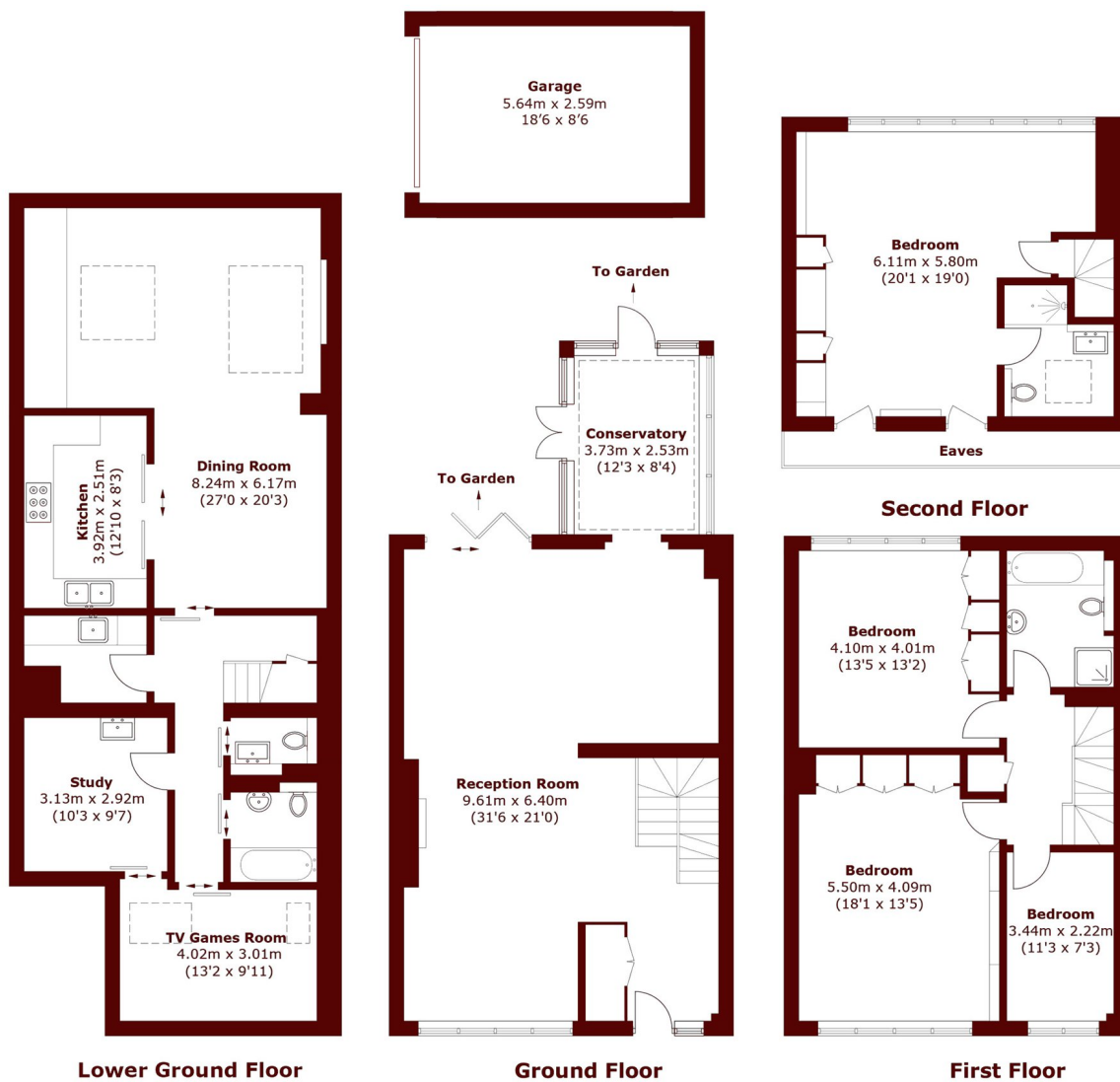








STEP INSIDE CAROLINE PLACE



Total area (approx.): 265.5 sq. m (2,857.2 sq. ft)
 (Including Basement & Excluding Eaves)
 Total Garage (approx.): 14.6 sq. m (157.1 sq. ft)

Notting Hill
 020 7313 2890

Energy Rating: C We aim to make our particulars both accurate and reliable. However, they are not guaranteed; nor do they form part of an offer or contract. If you require clarification on any points then please contact us, especially if you're traveling some distance to view. Please note that appliances and heating systems have not been tested and therefore no warranties can be given as to their good working order

MARSH &
 PARSONS