



## Wood Vale, SE23

£400,000

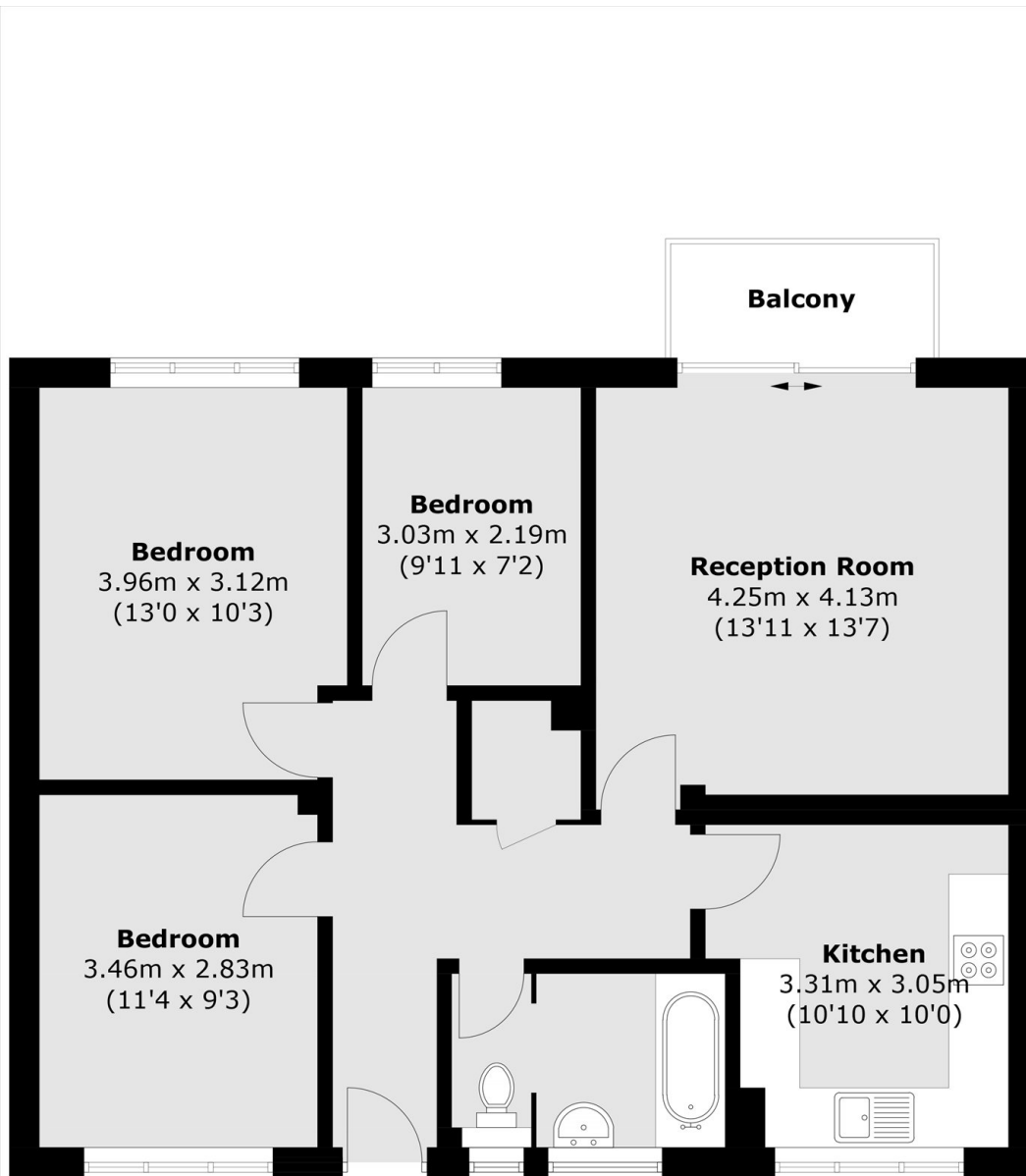
This spacious three bedroom flat located on the first floor offers over 800 sq ft of accommodation, a private garden and balcony, off street parking and a convenient location close to local stations.

Wood Vale is a sought after residential area ideally positioned between Forest Hill, Dulwich and Sydenham and benefits from excellent transport links. Nearby Forest Hill and Honor Oak Park stations offer London Overground and National Rail services. The area is well served by outstanding green spaces including Horniman Gardens, Dulwich Woods and Sydenham Hill Wood as well as a strong selection of well regarded local schools. Forest Hill and East Dulwich also provide a wide range of independent cafés, restaurants and pubs.

### Features

- Three Bedrooms
- Private Garden & Balcony
- Off Street Parking
- Over 800+ sqft
- Close To Stations
- Desirable Location

Wood Vale,  
London, SE23



Total area (approx.): 75.1 sq. m (808.4 sq. ft)  
Balcony area (approx.): 3.0 sq. m (32.3 sq. ft)