



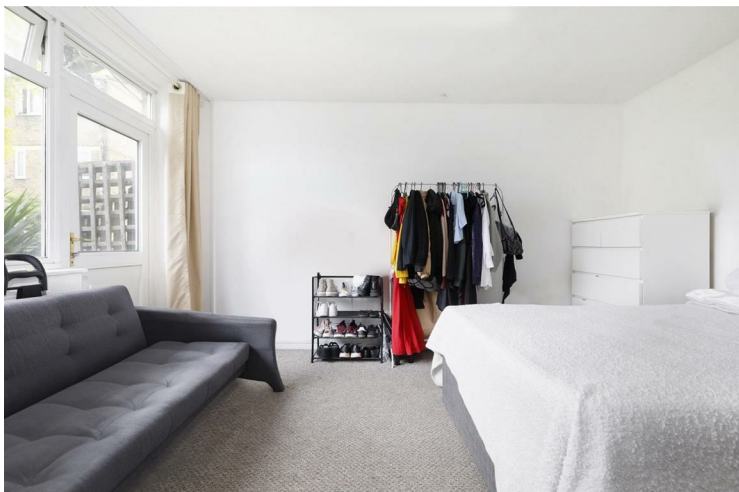
50 Woolstaplers Way London

£2,600 PCM

NO LIVING ROOM

Split level three bedroom apartment on Woolstaplers Way, Bermondsey SE16. The property is arranged over two levels and comprises three large double bedrooms, a large eat-in kitchen, a modern bathroom, a large storage cupboard suitable for bike storage and a large private balcony. Offered furnished.

Call the lettings department to reserve a viewing on 0207 015 1360.




- Three Bedroom Apartment • Split Level • No Living Room • Large eat - in kitchen • Furnished • Available 5th July







Energy Efficiency Rating		
	Current	Potential
<i>Very energy efficient - lower running costs</i>		
(92 plus) A		
(81-91) B		
(69-80) C	74	75
(55-68) D		
(39-54) E		
(21-38) F		
(1-20) G		
<i>Not energy efficient - higher running costs</i>		
England & Wales	EU Directive 2002/91/EC 	

Agents Note: Whilst every care has been taken to prepare these particulars, they are for guidance purposes only. All measurements are approximate and are for general guidance purposes only and whilst every care has been taken to ensure their accuracy, they should not be relied upon and potential buyers/tenants are advised to recheck the measurements

Borough Lettings
230 Borough High Street
London
SE1 1JX

020 7015 1360
enquiries@leonardleese.com
www.leonardleese.com

