



**Roxby Close, Hartlepool TS25 2AL**

**welcome to**

## **Roxby Close, Hartlepool**

Available for sale with no onward chain, this attractive and well-maintained three-bedroom semi-detached home is ideally positioned within this ever-popular residential location, highly regarded by families, and conveniently located within a short stroll of Seaton Beach.

### **Entrance Porch**

Composite door to side, inner door to entrance hall.

### **Entrance Hall**

Staircase to first floor, radiator.

### **Downstairs Wc**

Wall mounted wash hand basin, low level low flush WC.

### **Lounge**

12' 1" x 15' 7" ( 3.68m x 4.75m )

Box bow bay window to front, modern fireplace with gas fire, coved cornicing, radiator, sliding doors to dining room.

### **Dining Room**

10' 2" x 8' 9" ( 3.10m x 2.67m )

French door to rear, coved cornicing, radiator, solid wood floors.

### **Kitchen**

14' 4" (max) x 7' 9" (max) ( 4.37m (max) x 2.36m (max) )

Window to rear, wall and base unit with contrasting working surfaces and complimentary splashback tiling, built in double oven with hob and hood over, 1 1/2 sink and drainer with mixer tap, storage cupboard and under stairs storage cupboard.

### **Utility Room**

8' 8" (max) x 11' 5" (max) ( 2.64m (max) x 3.48m (max) )

Window to rear, door to rear, plumbing for washing machine, stainless steel sink and drainer unit, radiator, door to garage.

### **Bedroom 1**

12' 8" (max) x 11' 5" (max) ( 3.86m (max) x 3.48m (max) )

Window to front, fitted wardrobes and built in wardrobes, radiator.

### **Bedroom 2**

11' 5" x 9' 9" ( 3.48m x 2.97m )

Window to rear, built in robes, radiator.

### **Bedroom 3**

8' 9" (max) x 6' 9" (max) ( 2.67m (max) x 2.06m (max) )

Window to front, over stairs cupboard, radiator.

### **Bathroom**

Corner bath with mixer tap, spotlights, window to side, window to rear, double storage cupboard, low level low flush WC, chrome heated towel rail, vanity wash hand basin.

### **Front Garden**

Well stocked lawn.

### **Rear Garden**

Predominantly laid to lawn, mature shrubbery to borders.

### **Driveway And Garage**







***view this property online*** [mannersandharrison.co.uk/Property/HAR120259](https://mannersandharrison.co.uk/Property/HAR120259)



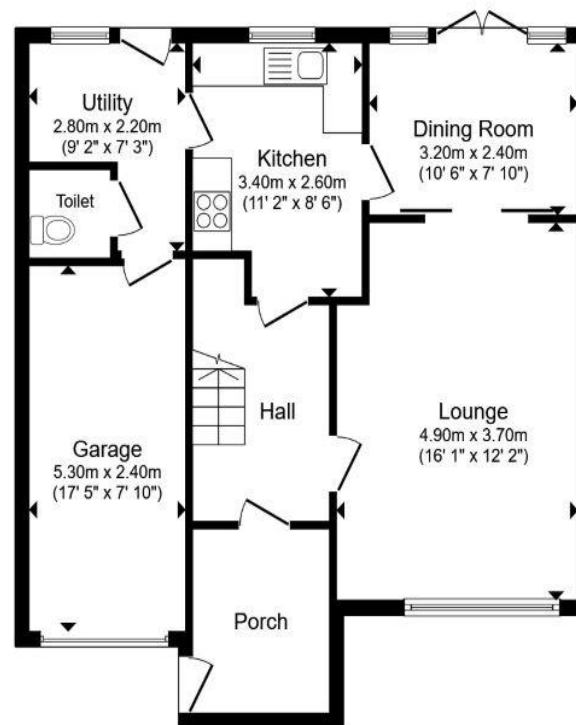
welcome to

## Roxby Close, Hartlepool

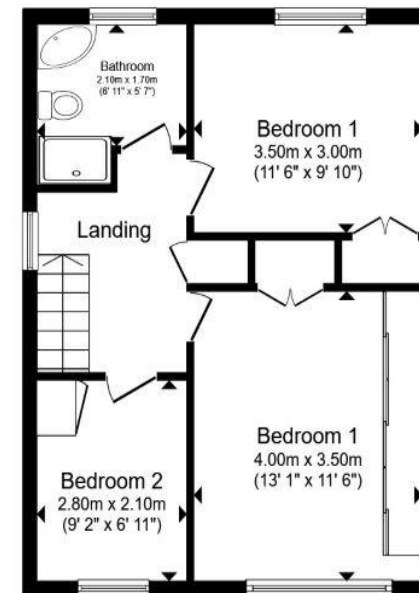
- NO ONWARD CHAIN
- UTILITY ROOM
- THREE BEDROOMS
- FRONT&REAR GARDENS
- DRIVEWAY&GARAGE

Tenure: Freehold EPC Rating: Awaited  
Council Tax Band: C

**£215,000**



**Ground Floor**



**First Floor**

Total floor area 115.3 m<sup>2</sup> (1,242 sq.ft.) approx

This floor plan is for illustrative purposes only. It is not drawn to scale. Any measurements, floor areas (including any total floor area), openings and orientation are approximate. No details are guaranteed, they cannot be relied upon for any purpose and they do not form part of any agreement. No liability is taken for any error, omission or misstatement. A party must rely upon its own inspection(s). Powered by [www.propertybox.io](http://www.propertybox.io)

**manners  
& harrison**

**view this property online** [mannersandharrison.co.uk/Property/HAR120259](http://mannersandharrison.co.uk/Property/HAR120259)



Property Ref:  
HAR120259 - 0003

1. MONEY LAUNDERING REGULATIONS Intending purchasers will be asked to produce identification documentation at a later stage and we would ask for your co-operation in order that there is no delay in agreeing the sale. 2. These particulars do not constitute part or all of an offer or contract. 3. The measurements indicated are supplied for guidance only and as such must be considered incorrect. Potential buyers are advised to recheck measurements before committing to any expense. 4. We have not tested any apparatus, equipment, fixtures or services and it is in the buyers interest to check the working condition of any appliances. 5. Where an EPC, or a Home Report (Scotland only) is held for this property, it is available for inspection at the branch by appointment. If you require a printed version of a Home Report, you will need to pay a reasonable production charge reflecting printing and other costs. 6. We are not able to offer an opinion either written or verbal on the content of these reports and this must be obtained from your legal representative. 7. Whilst we take care in preparing these reports, a buyer should ensure that his/her legal representative confirms as soon as possible all matters relating to title including the extent and boundaries of the property and other important matters before exchange of contracts.

Manners & Harrison is a trading name of Sequence (UK) Limited which is registered in England and Wales under company number 4268443, Registered Office is Cumbria House, 16-20 Hockliffe Street, Leighton Buzzard, Bedfordshire, LU7 1GN. VAT Registration Number is 500 2481 05.

**manners & harrison**



**01429 261351**



[Hartlepool@mannersandharrison.co.uk](mailto:Hartlepool@mannersandharrison.co.uk)



Shrewsbury House 129 York Road,  
HARTLEPOOL, Durham, TS26 9DW



**[mannersandharrison.co.uk](http://mannersandharrison.co.uk)**