

Seaforth Avenue  
Motspur Park, KT3 6JS

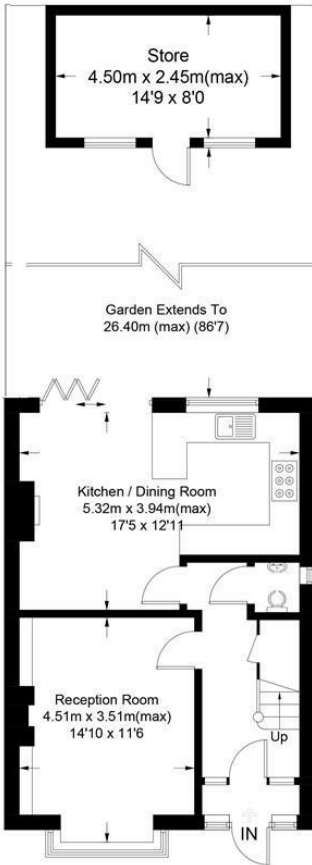
£675,000 Freehold



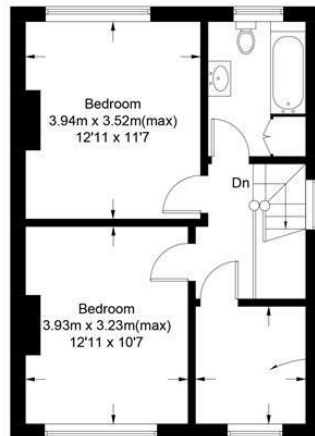
This beautifully presented **THREE BEDROOM**, detached house has a superb 86'ft South East facing garden with large storage shed and a fabulous open plan kitchen dining room. Located only 0.5 Miles to Motspur Park Station, Shops and the open space of the Sir Joseph Hood Memorial Playing Fields and walking distance from Raynes Park. There is also a spacious separate front reception room, a downstairs W.C and a modern bathroom. Potential to extend s.t.p.p.

## Seaforth Avenue, KT3

Approximate Gross Internal Area = 91.6 sq m / 986 sq ft  
 Store = 11.0 sq m / 118 sq ft  
 Total = 102.6 sq m / 1104 sq ft



Ground Floor

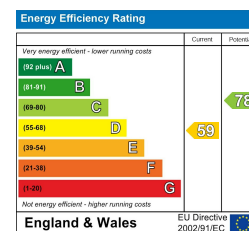


First Floor

This floor plan is for representation purposes only and is not drawn to scale.  
 The Gross Internal Area includes outbuildings shown on the plan.  
 Whilst every attempt has been made to ensure the accuracy of the plan measurements of doors, windows and rooms are approximate only and should be checked before making any decisions reliant upon them.  
 Copyright Bespokeplans.co.uk (ID543353)



- Three Bedroom - Detached House
- 87'ft South East Facing Garden With Large Storage Shed
- 0.5 Miles To Motspur Park Station And Shops
- 0.9 Miles To Raynes Park Station And Shops
- Beautiful Open Plan Kitchen Dining Room
- Downstairs W.C
- Potential To Extend S.T.P.P
- Spacious Separate Reception Room
- EPC - D
- Council Tax Band - D



For Free Mortgage Quote and Best Mortgage Rates, call Ellisons Mortgage Advisor on 0208 944 9595



Although these particulars are believed to be correct, their accuracy is not guaranteed and they do not form part of any contract.

Celebrating 30 years of successful Sales and Lettings in Merton

