



**POOLE
TOWNSEND**

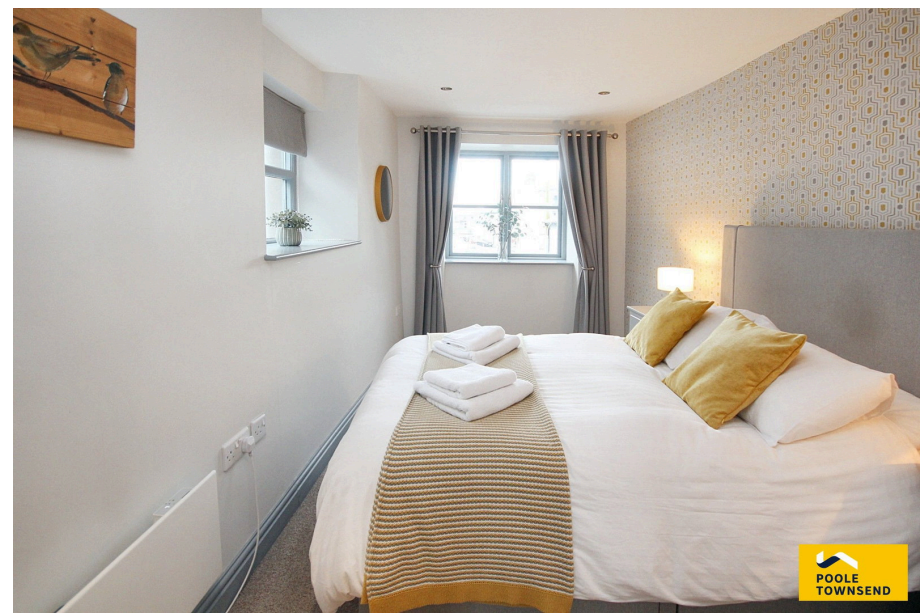
Buxton Place, Ulverston, LA12 7EF

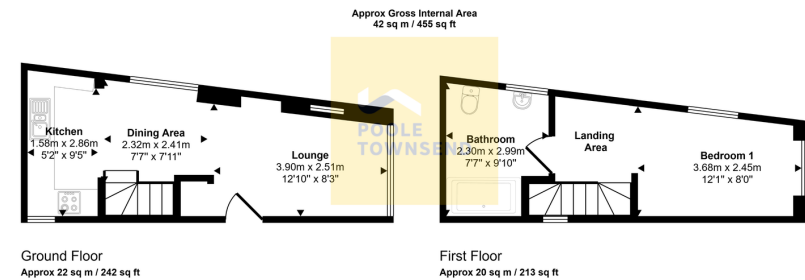
£175,000

🛏 1 🚿 1 🚗 1



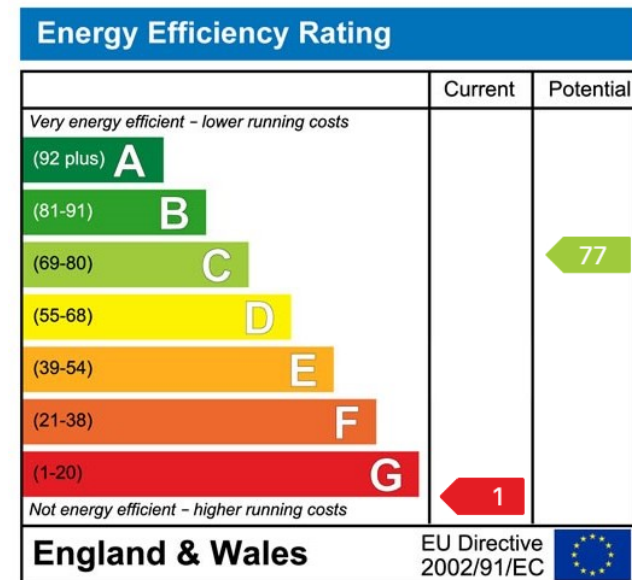
- Stylish modern mews
- Open plan living area
- Well presented kitchen
- One double bedroom and fabulous bathroom
- No upper chain
- Excellent location to access all the towns amenities
- Bright and airy throughout
- Suitable to a range of buyers, current use as a successful holiday let
- Freehold
- Council tax band tbc





This floorplan is only for illustrative purposes and is not to scale. Measurements of rooms, doors, windows, and any items are approximate and no responsibility is taken for any error, omission or mis-statement. Icons of items such as bathroom suites are representations only and may not look like the real items. Made with Made Snappy 360.

Nestled away within the centre of this vibrant market town, this property benefits from having convenient access to all the central amenities Ulverston has to offer. Buxton Lodge has been renovated to a high standard. This stylish accommodation extends over 2 floors including open plan lounge / kitchen to the ground floor, staircase leading to the first floor with a modern bathroom and bedroom. Currently used as a successful holiday let, this property is ideal for a range of buyers including investors, those looking for a second home or a FTB. **Can be sold to include all the contents.* No upper chain. Viewing highly recommended.



Visit us at
www.pooletownsend.co.uk
enquiries@pooletownsend.co.uk

We are open
 Monday – Friday 9.00 – 5.00
 Saturday 9.00 – 1.00

Barrow 01229 811811
 Ulverston 01229 588111
 Grange 015395 33316
 Kendal 01539 734455
 Milnthorpe 015395 62044