



HUNTERS[®]

HERE TO GET *you* THERE

 3  2  1  B

CURLEW GROVE, DARWEN

£270,000



This lovely detached property makes the ideal starter home for young families. Located on one of Darwen most popular developments this is a very exciting opportunity.

The property comprises; entrance hall, lounge with bay window, open plan kitchen & dining rooms, three bedrooms, master en-suite shower room and a three piece bathroom. To the rear there is a generous sized landscaped garden with a mixture of lawn, decked patio and raised planters. To the front there is a lawn garden alongside a double length driveway.

Situated off Cranberry Lane the property is located convenient for local shops, schools and access to the town centres of Darwen and Blackburn. There is easy access to the M65 motorway link as well as A roads to neighbouring towns such as Bolton.

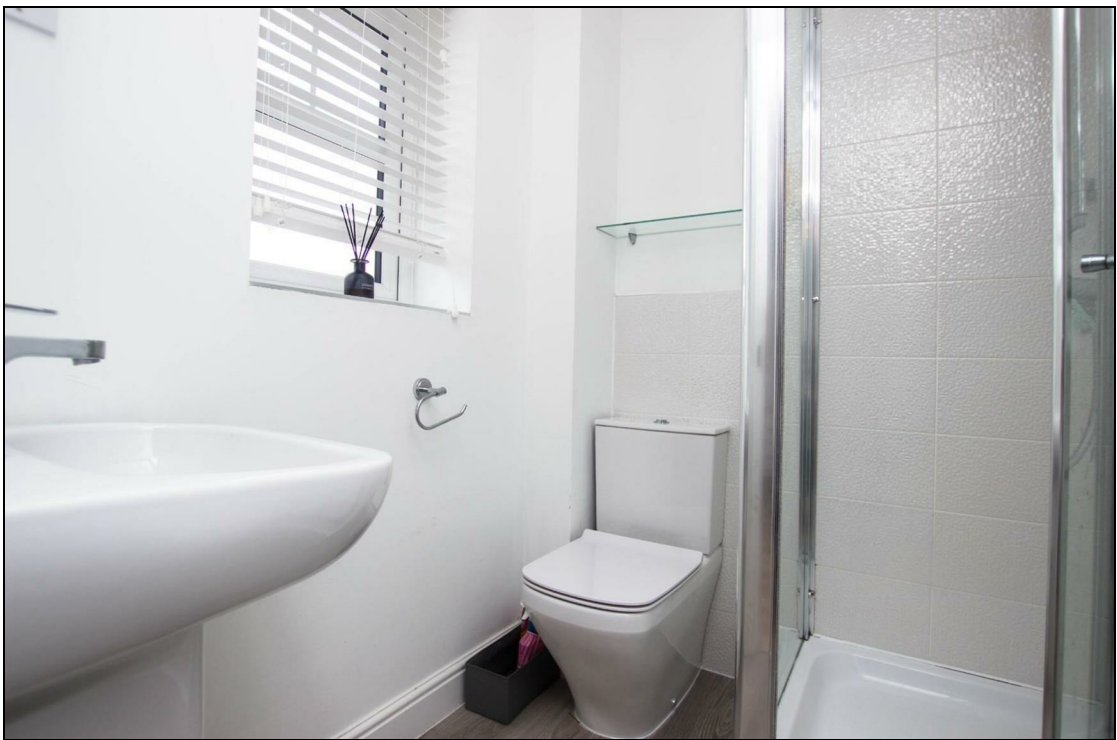
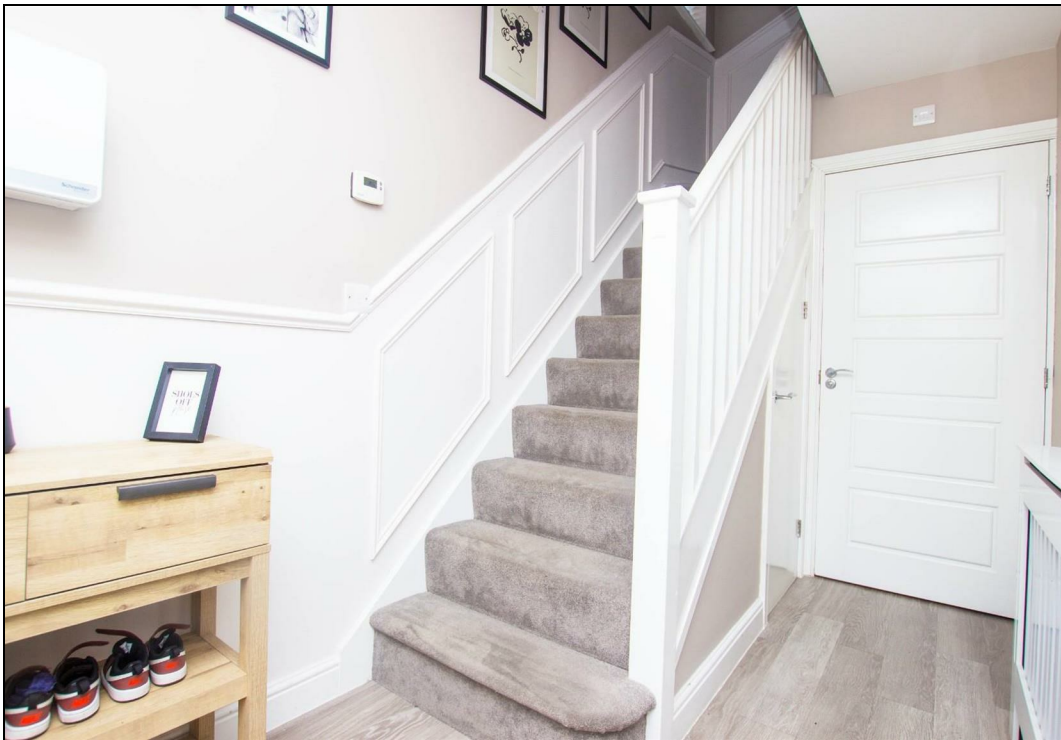
OUR THOUGHTS - *'An excellent option for young families on a very popular development'*

KEY FEATURES

- Modern Detached
- Three Bedrooms
- Bathroom & En-Suite
- Generous Sized Rear Garden
- Double Length Driveway
- Attractive Lounge
- Open Plan Kitchen & Dining
- Very Popular Development

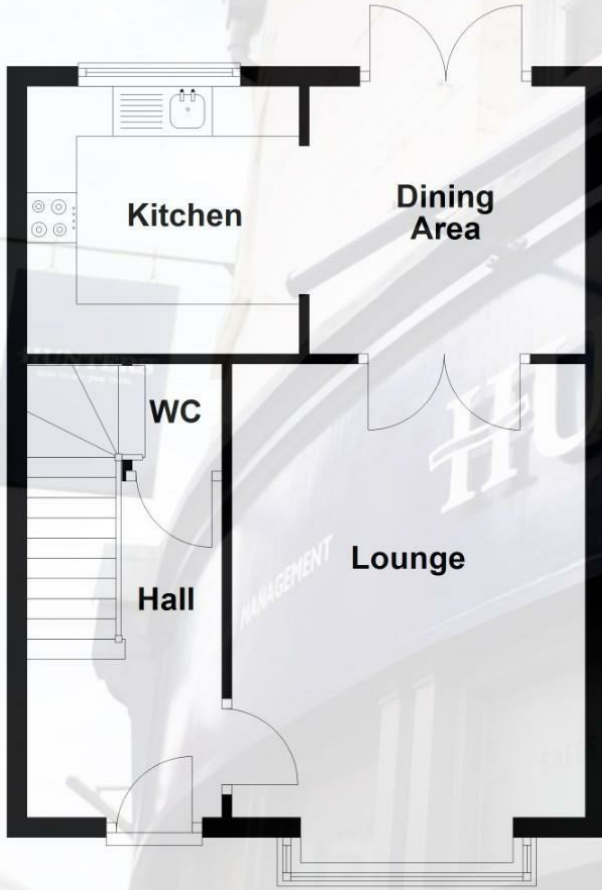






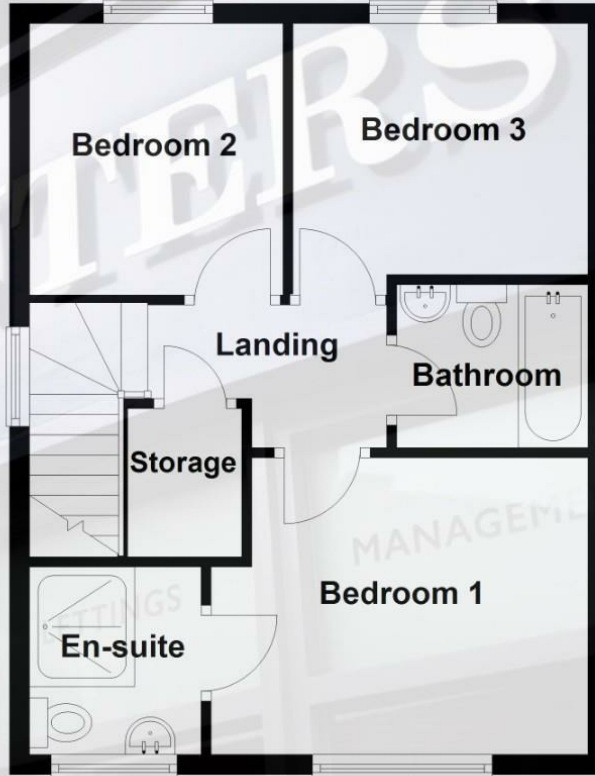
Ground Floor

Approx. 41.6 sq. metres (447.5 sq. feet)



First Floor

Approx. 41.1 sq. metres (442.3 sq. feet)



Total area: approx. 82.7 sq. metres (889.8 sq. feet)

