



3 Shore House, Hillfield Road, Selsey, PO20 0FP
£700,000 Freehold



4 Bedrooms



3 Bathrooms



2 Reception Rooms

SW

Sims Williams

Key Features

- Three Storey Townhouse
- Directly Opposite The Sea
- Terrace Of Five Homes
- Four Bedrooms
- Principal Bedroom With Ensuite
- Sitting/Dining Room
- Integral Garage
- Private Beachfront Gardens
- Direct Access To The Shoreline

EPC Rating

Current = C

Potential = C

Council Tax Band

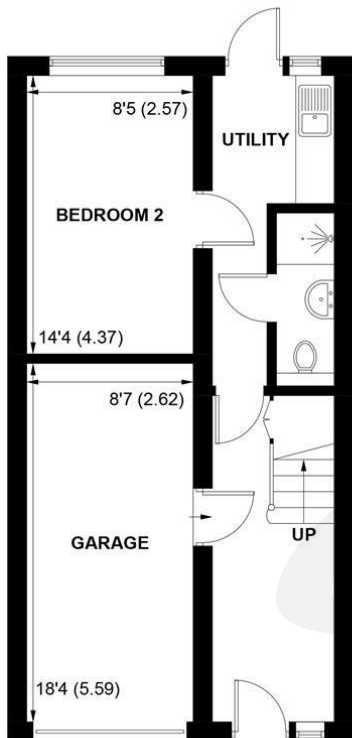
Band = D

Tenure - Freehold

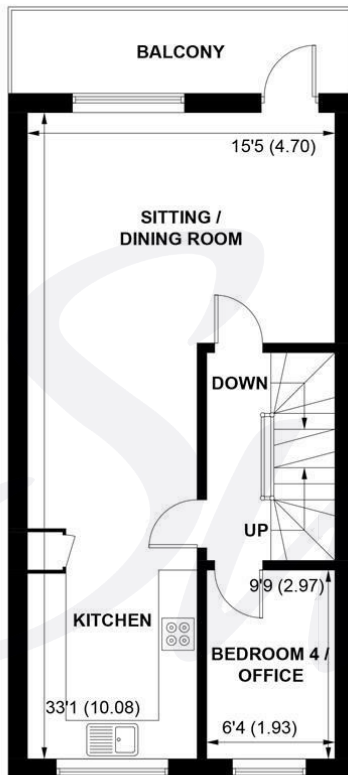




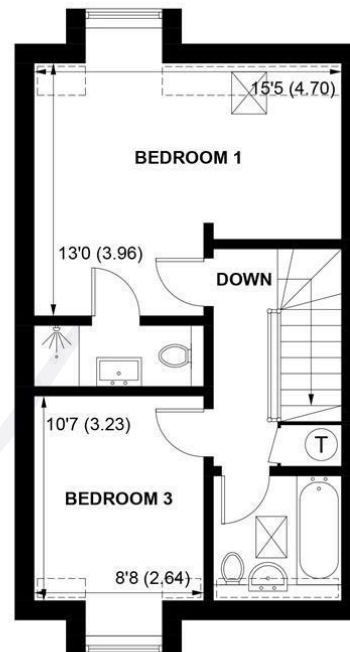
 = REDUCED HEADROOM BELOW 1.5M / 5'0



GROUND FLOOR



FIRST FLOOR



SECOND FLOOR

**APPROXIMATE GROSS INTERNAL AREA = 1496 SQ FT / 139.0 SQ M
(INCLUDING GARAGE)**

**NOT TO SCALE (For illustrative purposes only as defined by RICS Code of Measuring Practice) 2026 ©
Produced for Sims Williams**



simswilliams.co.uk

CHICHESTER

8-9 Southgate
Sales 01243 787868
Lettings 01243 836055
chichester@simswilliams.co.uk

WALBERTON

5 Maple Parade
Sales 01243 551368
Lettings 01243 836055
walberton@simswilliams.co.uk

ARUNDEL

8a High Street
Sales 01903 885678
Lettings 01903 881133
arundel@simswilliams.co.uk

BOGNOR REGIS

46 High Street
Sales 01243 862626
Lettings 01243 836055
bognor-regis@simswilliams.co.uk

Viewing Strictly by arrangement via the vendor's agent Sims Williams 01243 787868. These particulars are believed to be correct but their accuracy is not guaranteed and they do not form part of any contract.