



Canonbury Square

Canonbury, N1

Offers in excess of £700,000

A stunning two bedroom apartment is set within a converted Grade II Listed house, on one of Islington's most prestige garden squares, with direct access to a large communal garden from the reception room.

CHESTERTONS



Canonbury Square

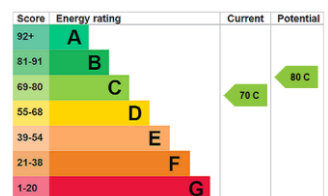
Canonbury, N1

- Lower-ground floor apartment
- 2 double bedrooms
- Grade II Listed
- Located on an enviable garden square
- Moments from Upper Street



A stunning two-bedroom apartment is set within a converted Grade II Listed house, on one of Islington's most prestige garden squares, with direct access to a large communal garden from the reception room. The property is well-proportioned comprising; large living area; separate spacious kitchen with plenty of worktop and cupboard space; the family bathroom benefits from a jacuzzi bath; the master bedroom offers plenty of built in wardrobe space along with a shower/vanity area; the second bedroom is equally as spacious; the impressive communal garden is accessed directly from the reception area, beautifully maintained making it the perfect place to enjoy the outdoors. Located in highly sought-after Canonbury, this property offers an excellent location for those looking to enjoy all that central Islington has to offer. Canonbury Square is a charming garden square, moments from the peace and tranquillity of the New River Walk, whilst retaining convenient access to the community focal point of the local shops on Canonbury Place, and within close proximity of the shops, bars and restaurants of Upper Street. Transport can be found at Highbury & Islington station (Victoria Line, London Overground and National Rail) with fabulous connections to the City and West End. Overall, this apartment is a rare gem, offering a beautiful living space with modern features whilst retaining character, a stunning communal garden, and an unbeatable location.

Tenure: Leasehold 140 years and 9 months
Service Charge: £4600
Ground Rent: £0
Local Authority: Islington
Council Tax Band: E



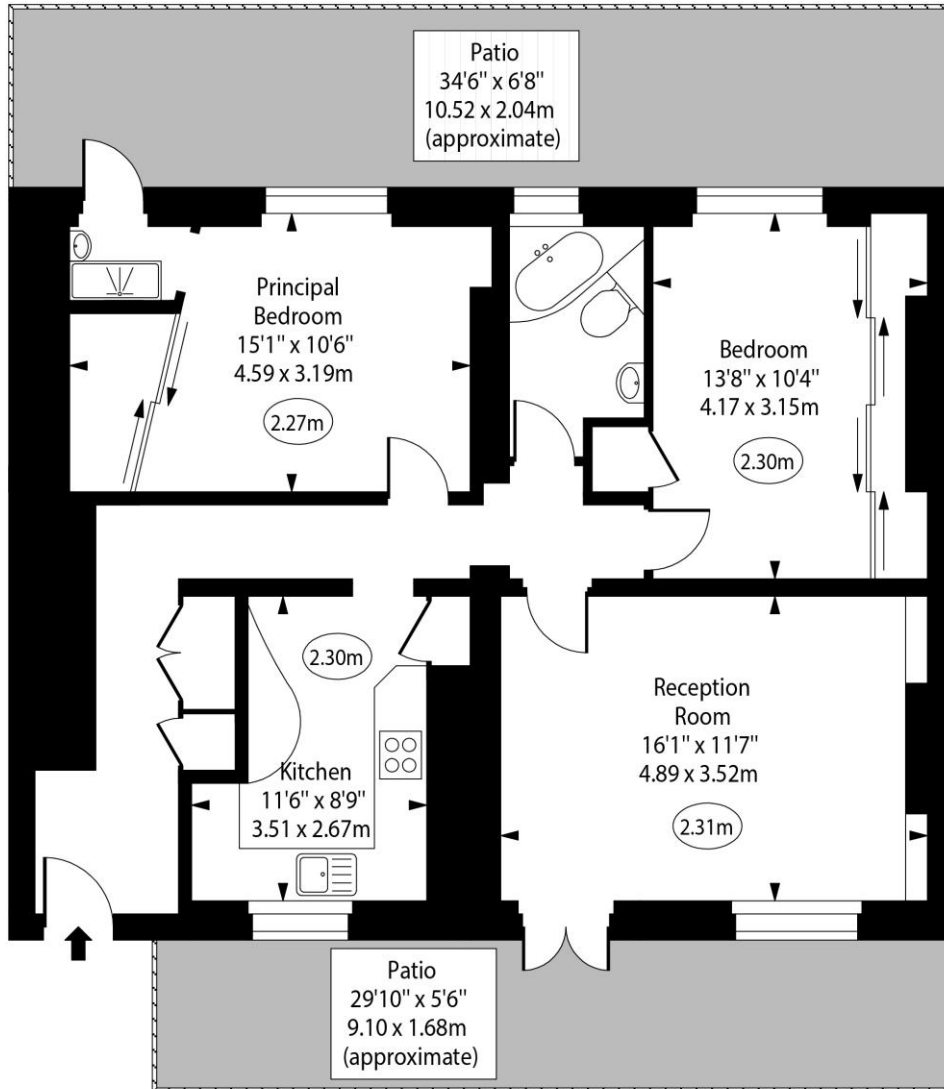
Chestertons Islington Sales

327-329 Upper Street
 Islington
 London
 N1 2XQ
 islington@chestertons.co.uk
 020 7359 9777
 chestertons.co.uk

Canonbury Square, Islington, N1



○ - Ceiling Height



Lower Ground Floor

Approx Gross Internal Area 825 Sq Ft - 76.64 Sq M

Every attempt has been made to ensure the accuracy of the floor plan shown. However, all measurements, fixtures, fittings, and data shown are approximate interpretations and for illustrative purposes only.

Measured according to the RICS IPMS 2. Not To Scale.

www.goldlens.co.uk

Ref. No. 028549J

