

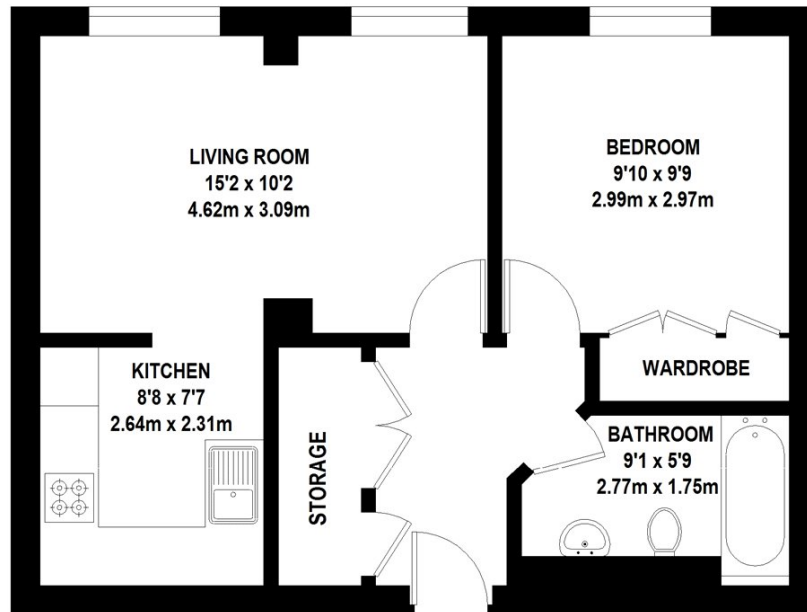


## LAMBERT HOUSE, EC4M

£400,000

**\*\* OFFERS OVER £400,000\*\*** The third floor one bedroom apartment, features a bright open-plan reception and kitchen with space for dining, a double bedroom with fitted wardrobe, and hallway storage.

- One Bedroom
- Third Floor
- Open Plan
- Fitted Wardrobe
- Storage
- Transport Links



TOTAL APPROX. FLOOR AREA 470 SQ.FT. (43.7 SQ.M)

Whilst every attempt has been made to ensure the accuracy of the floor plan contained here, measurements of door, windows, rooms and any other items are approximate and no responsibility is taken for any error, omission, or mis-statement. This plan is for illustrative purposes only and should be used as such by any prospective purchaser. The services, systems and appliances shown have not been tested and no guarantee as to their operability or efficiency can be given

© 2020 (ID710503)

### **LiFE RESIDENTIAL**

71 Drayton Park, London, N5

1BF

Sales: 020 3838 8666

Lettings: 020 7359 4488

Energy Rating: . We aim to make our particulars both accurate and reliable. However they are not guaranteed; nor do they form part of an offer or contract. If you require clarification on any points then please contact us, especially if you're traveling some distance to view. Please note that appliances and heating systems have not been tested and therefore no warranties can be given as to their good working order.