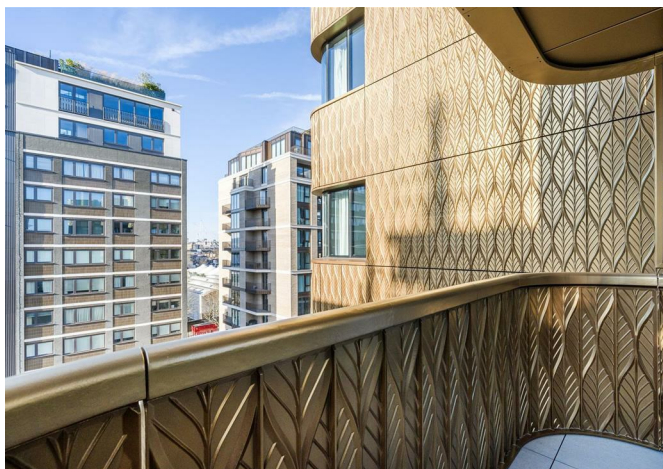


CHARMILL

RESIDENTIAL



The Compton, St John's Wood NW8
£850,000

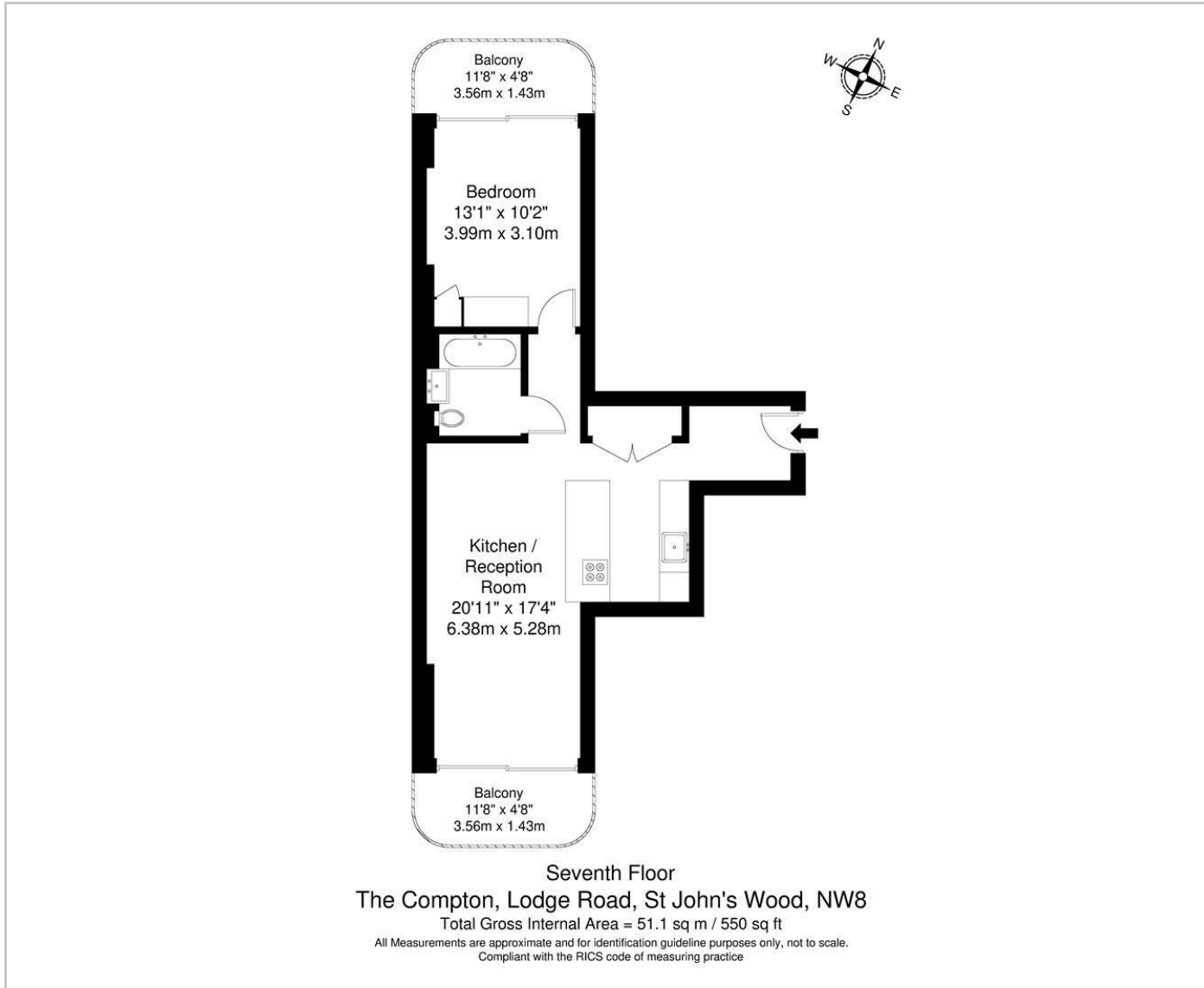


Situated on the seventh floor (with lift) of a distinctive block namely The Compton, is this stunning one bedroom apartment. Built by the well-renowned Regal and interior designed by Kelly Hoppen the apartment comprises a fully fitted contemporary designer German kitchen, reception/dining room which leads out to a private balcony with views across London's skyline, a family bathroom with integrated TV in the bath and a double bedroom with fitted wardrobes with another private balcony leading off of it. The apartment further features underfloor heating, comfort cooling and a Sonos sound system with ceiling speakers. Furthermore residents have use of a fully equipped gym, a large communal roof terrace, a 24 hour porter and a bike store.

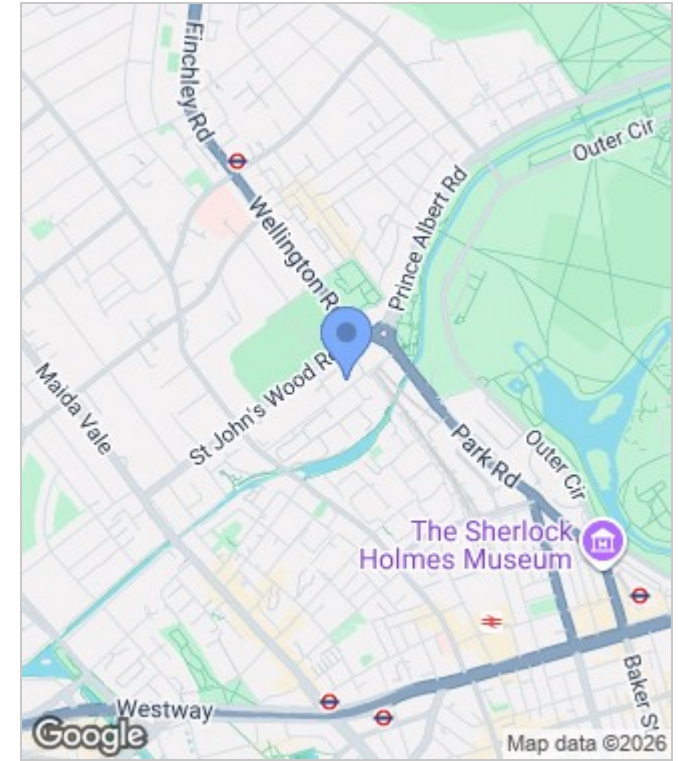
The Compton is located moments away from St John's Wood High Street which offers a vast array of fashionable shops, cafes and restaurants as well as Lord's Cricket Ground and the green open spaces of Regent's Park. St John's Wood station (Jubilee line) is 0.6 miles away.



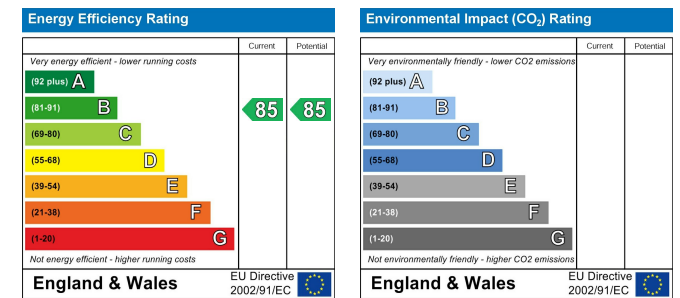
Floor Plan



Area Map



Energy Performance Graph



These particulars, whilst believed to be accurate are set out as a general outline only for guidance and do not constitute any part of an offer or contract. Intending purchasers should not rely on them as statements of representation of fact, but must satisfy themselves by inspection or otherwise as to their accuracy. No person in this firm's employment has the authority to make or give any representation or warranty in respect of the property.



020 7046 6275 • sales@charmillresidential.co.uk • 51 Maida Vale, Little Venice, London W9 1SD

charmillresidential.co.uk