



## MALWOOD ROAD, SW12

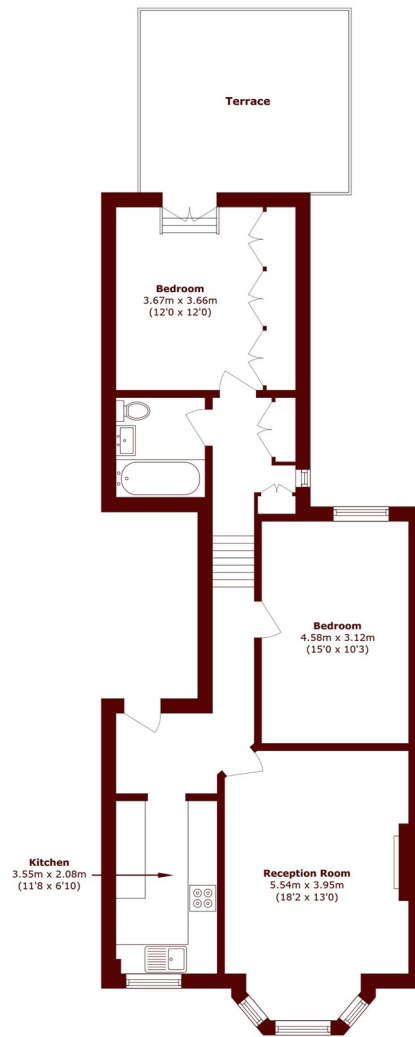
£3,000 per month

This wonderful two-bedroom first floor apartment has been recently refurbished and is presented in fantastic condition throughout.

Two bedrooms  
Large terrace  
Refurbished

Spacious  
Clapham South  
Energy rating: c

# STEP INSIDE MALWOOD ROAD



Total area (approx.): 72.8 sq. m (783.6 sq. ft)  
Terrace area (approx.): 16.0 sq. m (172.2 sq. ft)

**Balham & Clapham South**  
020 8772 9200

Energy Rating: We aim to make our particulars both accurate and reliable. However, they are not guaranteed; nor do they form part of an offer or contract. If you require clarification on any points then please contact us, especially if you're traveling some distance to view. Please note that appliances and heating systems have not been tested and therefore no warranties can be given as to their good working order

**MARSH &  
PARSONS**