



Garden Flat, 15 Beech Hill Road, Sheffield, S10 2SA

Rent: £690.00 pcm, excludes utilities & council tax

Rent Schedule: Monthly in advance

Security Deposit: Total £690.00

Bills Package: Unihomes package available for gas, electricity, water internet & TV licence (optional)

Council Tax: Band A - not applicable for full-time students

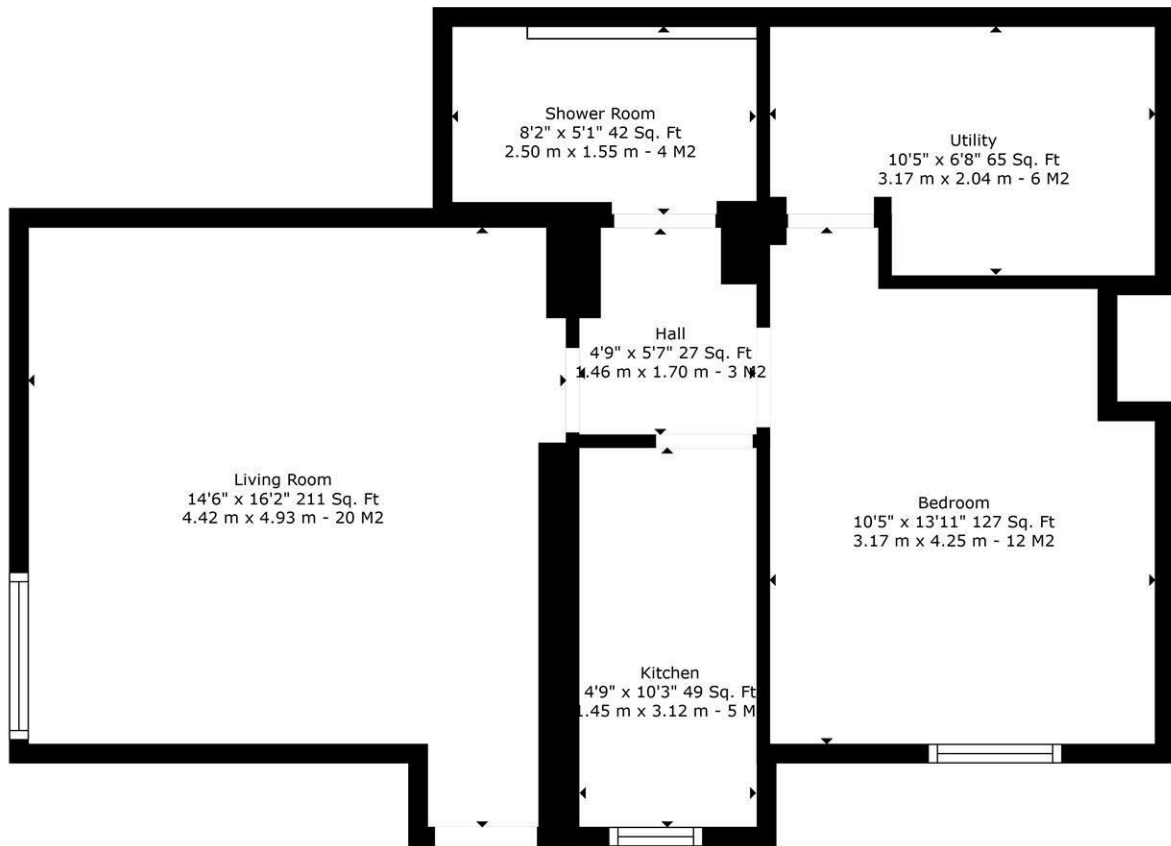
EPC Rating: D

Tenancy Dates: 2nd September 2026 – 31st August 2027

£690 PCM

Available: 2nd September 2026

- One Bedroom Flat
- Close to Hallamshire Hospital
- Double Bedroom
- Shower over Bath
- Extra Storage/Utility Room
- Large Lounge & Modern Fitted Kitchen
- Deposit - One Months Rent
- Available - 2nd September 2026 - 31st August 2027
- Rent - £690 pcm
- Unihomes Bills package available upon request



BROOMHILL
PROPERTY SHOP

TOTAL: 541 sq. ft, 50 m2
15 BEECH HILL ROAD, GARDEN FLAT: 541 sq. ft, 50 m2

Sizes And Dimentions Are Approximate. Actual May Vary

Energy Efficiency Rating		Current	Potential
Very energy efficient - lower running costs			
(92 plus) A			
(81-91) B			
(69-80) C			
(55-68) D			
(39-54) E			
(21-38) F			
(1-20) G			
Not energy efficient - higher running costs			
England & Wales	EU Directive 2002/91/EC	67	77

Environmental Impact (CO ₂) Rating		Current	Potential
Very environmentally friendly - lower CO ₂ emissions			
(92 plus) A			
(81-91) B			
(69-80) C			
(55-68) D			
(39-54) E			
(21-38) F			
(1-20) G			
Not environmentally friendly - higher CO ₂ emissions			
England & Wales	EU Directive 2002/91/EC	66	80