

SW19

it's all in the postcode...



Singleton Close

Colliers Wood

**Offers in excess of
£550,000**

- Three bedrooms
- Off street parking
- Cul-de-sac location
- Freehold
- Well presented
- No chain
- Council tax Band D
- EPC Rating C



020 8544 2828

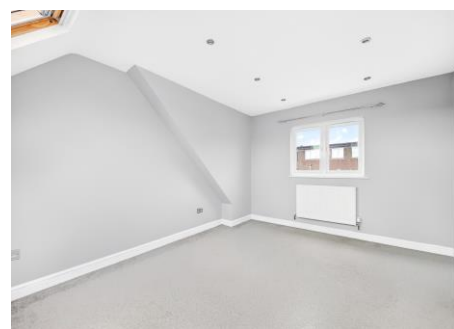
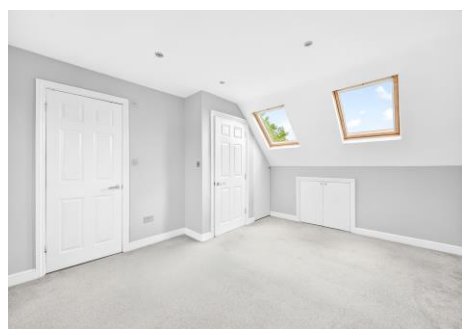
Wimbledon: Wimbledon Park: Colliers Wood

www.SW19.com

SW19 Estate Agents Ltd. Is registered in England & Wales No. 05508737

it's all in the postcode...

A beautifully extended three-bedroom family home, ideally positioned on a quiet cul-de-sac within easy reach of Colliers Wood Underground Station and Tooting mainline services, and benefiting from off-street parking. This impressive property features a stunning open-plan kitchen/diner with direct access to a private, enclosed rear garden—perfect for entertaining—alongside a separate, inviting lounge. Upstairs, the home offers three generous double bedrooms and two well-appointed bathrooms, including a stylish en-suite to the spacious principal bedroom. Designed with modern family living in mind, this home combines comfort, space, and convenience in a highly desirable location.

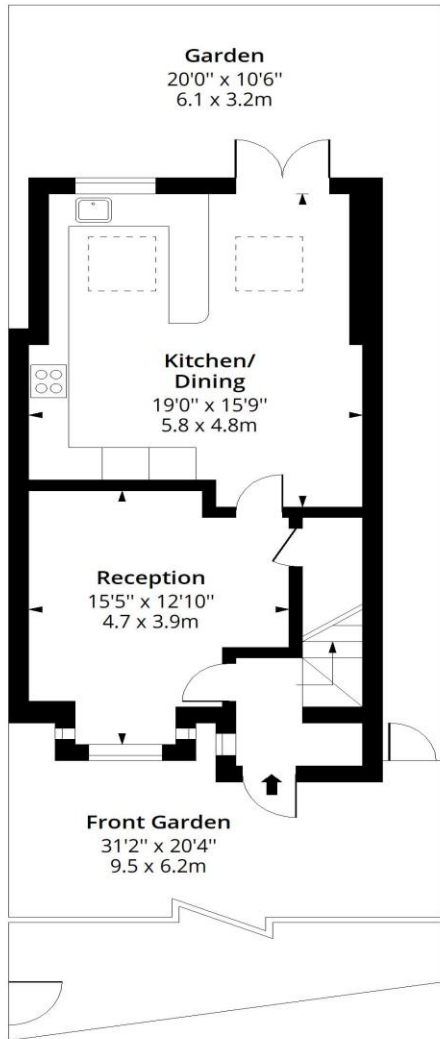


020 8544 2828
Wimbledon: Wimbledon Park: Colliers Wood
www.SW19.com
SW19 Estate Agents Ltd. Is registered in England & Wales No. 05508737

'it's all in the postcode...'

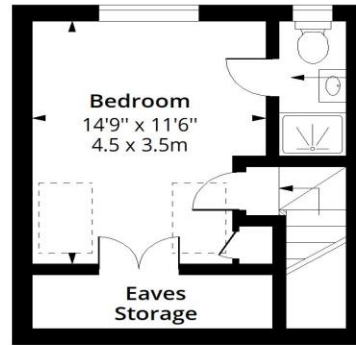
Singleton Close SW17

Approx. Gross Internal Area 1133 Sq Ft - 105.26 Sq M
 Approx. Gross Eaves Storage Area 39 Sq Ft - 3.62 Sq M



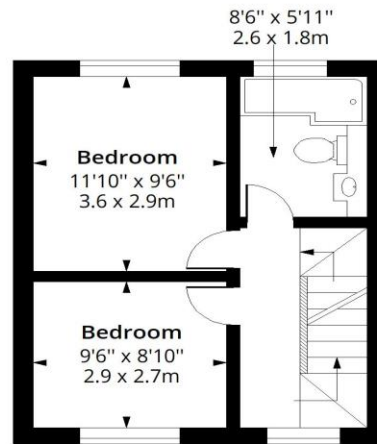
Ground Floor

Floor Area 544 Sq Ft - 50.54 Sq M



Second Floor

Floor Area 239 Sq Ft - 22.20 Sq M



First Floor

Floor Area 350 Sq Ft - 32.52 Sq M



Measured according to RICS IPMS2. Floor plan is for illustrative purposes only and is not to scale. Every attempt has been made to ensure the accuracy of the floor plan shown, however all measurements, fixtures, fittings and data shown are an approximate interpretation for illustrative purposes only. 1 sq m = 10.76 sq feet.

lpaplus.com

Date: 28/4/2026

020 8544 2828
 Wimbledon: Wimbledon Park: Colliers Wood
 www.SW19.com
 SW19 Estate Agents Ltd. Is registered in England & Wales No. 05508737

'it's all in the postcode...'

These particulars are for guidance only and should not be relied upon as a statement or representation of fact. All measurements given are approximate only and should not be relied upon for ordering carpets, equipment etc. Purchasers should satisfy themselves by inspection or otherwise as to the accuracy of the statements contained within. Neither SW19 estate agents ltd or related companies or their employees can confirm structural conditions of the property or that any appliances or other facilities are in working order. Purchasers are strongly recommended to arrange their own survey.

020 8544 2828

Wimbledon: Wimbledon Park: Colliers Wood

www.SW19.com

SW19 Estate Agents Ltd. Is registered in England & Wales No. 05508737

'it's all in the postcode...'