



## Huddleston Road, NW2

£550,000

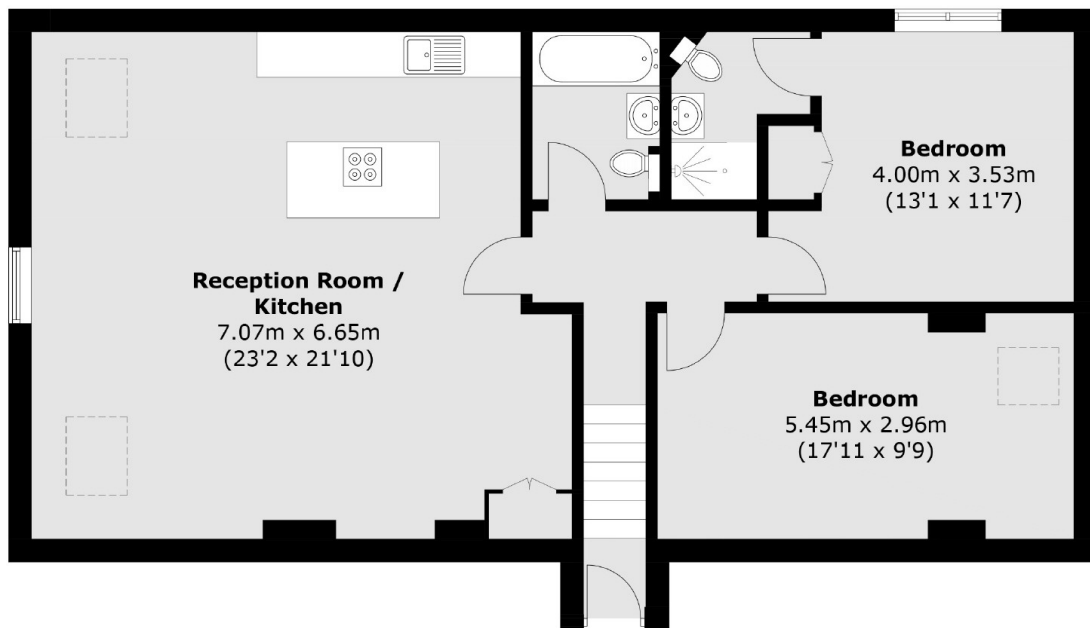
This unique church conversion, developed around four years ago, is impeccably finished and features two double bedrooms, one with an en suite, a family bathroom and a spacious open plan kitchen and reception area perfect for entertaining. The property comes with a long lease and no onward chain.

Situated on Huddleston Road, a short walk away from the local cafés, restaurants and amenities of Willesden Green and Walm Lane. The 86 acre green open spaces of Gladstone Park are nearby, and transport links are superb from Willesden Green (Jubilee line) and Dollis Hill (Jubilee line).

### Features

- Two Double Bedrooms
- In Excess Of 950 sqft
- Open Plan Living Area
- Church Conversion
- Modern Finish
- Long Lease

# Huddlestone Road, London, NW2



Total area (approx.): 91.5 sq. m (984.9 sq. ft)