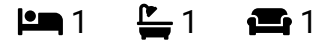




Park Crescent, Marylebone, W1B

Guide Price £700,000



PLEASE SELECT 1 FOR GEORGE ON CALLING - GUIDE PRICE £700K - £795K – FANTASTIC 1 BED 3RD FLOOR APARTMENT (529 SQ.FT), PRESTIGIOUS NASH TERRACE LOCATION IN THE HEART OF MARYLEBONE, BRIGHT AND SPACIOUS ACCOMMODATION, ENORMOUS PERIOD APPEAL, GLORIOUS PRIVATE RESIDENTS GARDENS AND LAWN TENNIS COURTS, SECURE ENTRY, UNIFORMED CONCIERGE, LONG LEASE, NO CHAIN.

George Fane
georgefane.exp.uk.com
george.fane@exp.uk.com
07522 922 952



Key Features

- FANTASTIC 1 BED 3RD FLOOR APARTMENT • PRESTIGIOUS NASH TERRACE LOCATION (529 SQ.FT),
- HEART OF MARYLEBONE, WELL BEHAVED DOGS /PETS ALLOWED
- ENORMOUS PERIOD APPEAL
- UNIFORMED CONCIERGE
- MOMENTS FROM REGENT'S PARK AND MARYLEBONE STATIONS
- BRIGHT AND SPACIOUS ACCOMMODATION
- GLORIOUS RESIDENTS GARDENS
- LONG LEASE, NO CHAIN
- CLOSE TO EXCLUSIVE SHOPS, RESTAURANTS AND AMENITIES

Park Crescent

Approximate Area = 49.2 sq m / 529 sq ft
Including Limited Use Area (1.4 sq m / 15 sq ft)

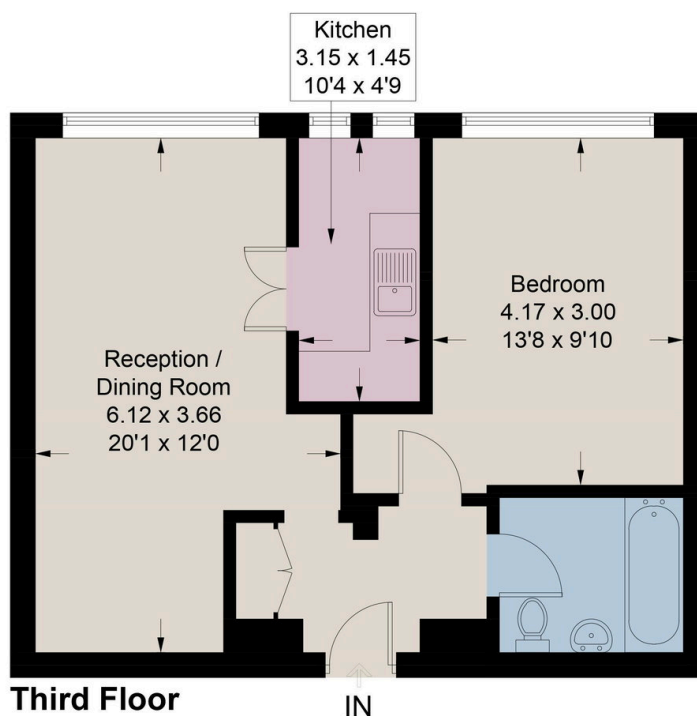


Illustration for identification purposes only, not for valuation purposes, measurements are approximate, not to scale.

George Fane

georgefane.exp.uk.com
george.fane@exp.uk.com
07522 922 952