



101 Cleveland Street, Fitzrovia, London, W1T

£8,000 pcm

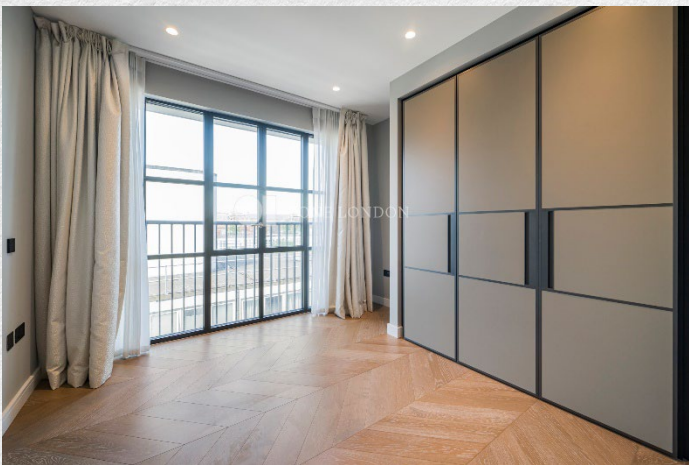
- New Luxury development
- Three bedrooms
- Three bathrooms
- Private balcony
- 1,132 sq ft
- Landscaped gardens
- Luxury residents' facilities
- Sought after location
- 24 hour concierge

Located in the heart of Fitzrovia, W1, this stunning 1,132 sq ft apartment at 101 on Cleveland offers premium urban living.

Designed by award-winning architectural practice Assael, the spacious three-bedroom, three-bathroom property features a sun-drenched, open-plan kitchen and reception room with spectacular far-reaching views and abundant natural light. High-end comforts include underfloor heating, climate-controlled comfort cooling, and an inviting private balcony.

Residents enjoy exclusive access to an array of five-star amenities: a 24-hour concierge, beautiful landscaped gardens, a fully equipped gym, a swimming pool, a sauna, and a steam room.

The luxury building also boasts an intimate private dining room, a screening room, and an elegant residents' bar and lounge. Perfectly positioned to experience London's premier lifestyle, the development sits moments away from the city's vibrant art scene, world-class dining, and elite shopping destinations on Bond Street and Oxford Street. Peaceful morning walks in nearby Regent's Park are also just a short stroll away. Whether you seek a sophisticated sanctuary or a vibrant city base, this exceptional residence delivers the ultimate high-end central London lifestyle.





ONE LONDON

PROPERTY

101 Cleveland, Fitzrovia,
London, W1T

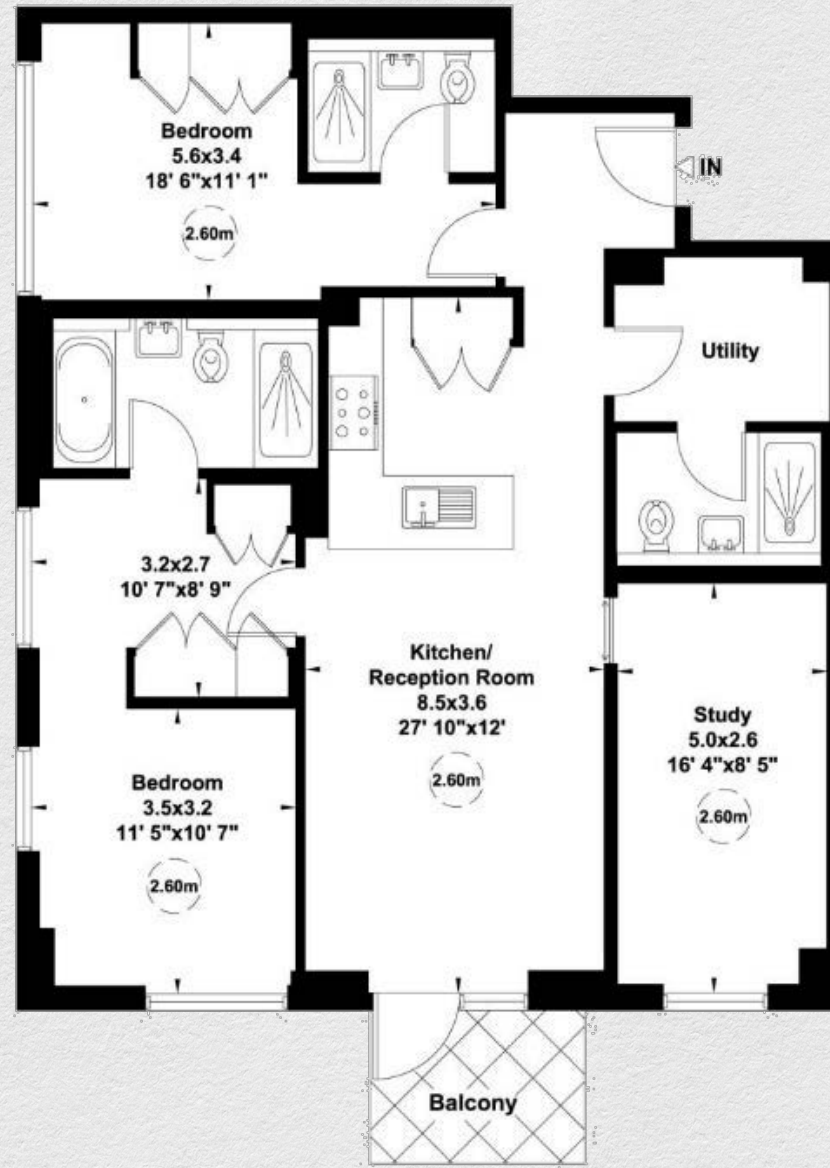
SIZE

1,132 sq ft

Three bedroom | Three bathroom

CONTACT

0207 856 0396
info@one-london.uk
www.one-london.uk



** For illustration purposes only. Could not be to scale.
One-London aims to ensure accuracy but is not liable
for any discrepancies.

BRC103