



3 King Street, Woodford

Freehold

STUNNING OPEN VIEWS SURROUNDING THE PROPERTY • TWO DOWNSTAIRS RECEPTION ROOMS • SEMI-RURAL LOCATION • THREE DOUBLE BEDROOMS, ONE SINGLE, AND A LOFT ROOM • OCCASIONAL LOFT ROOM • GARDENS TO THE FRONT AND THE REAR • DETACHED GARAGE



Council Tax band: F

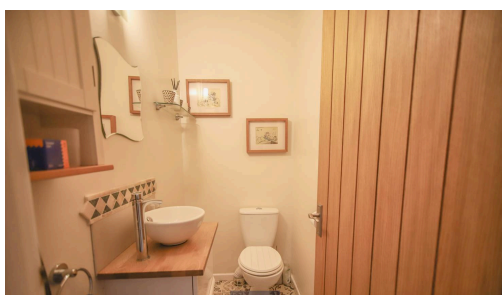
Tenure: Freehold

EPC Energy Efficiency Rating: C

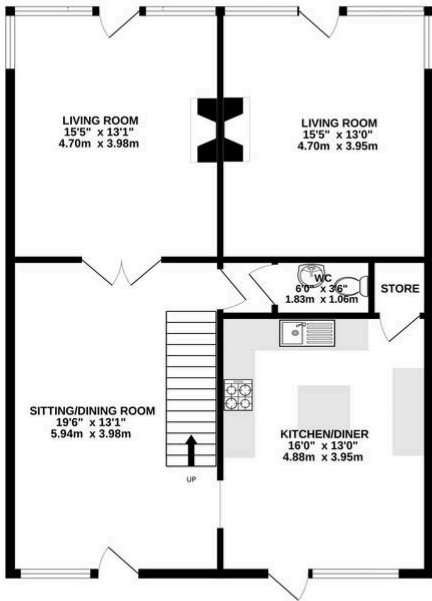
EPC Environmental Impact Rating: F



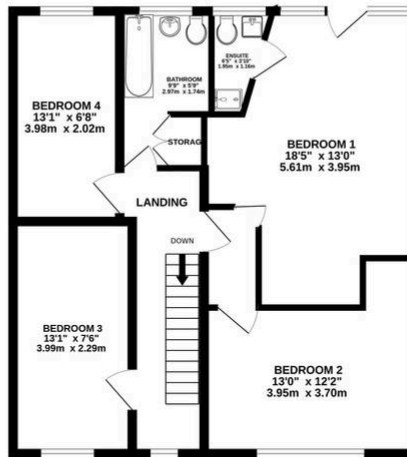
- › STUNNING OPEN VIEWS SURROUNDING THE PROPERTY
- › TWO DOWNSTAIRS RECEPTION ROOMS
- › SEMI-RURAL LOCATION
- › THREE DOUBLE BEDROOMS, ONE SINGLE, AND A LOFT ROOM
- › OCCASIONAL LOFT ROOM
- › GARDENS TO THE FRONT AND THE REAR
- › DETACHED GARAGE



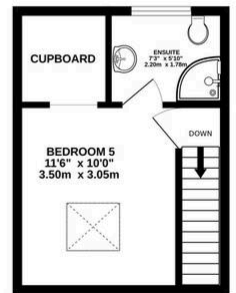
GROUND FLOOR
896 sq.ft. (83.2 sq.m.) approx.



1ST FLOOR
683 sq.ft. (63.4 sq.m.) approx.



2ND FLOOR
223 sq.ft. (20.7 sq.m.) approx.



TOTAL FLOOR AREA: 1802 sq.ft. (167.4 sq.m.) approx.

Whilst every attempt has been made to ensure the accuracy of the floorplan contained here, measurements of doors, windows, rooms and any other items are approximate and no responsibility is taken for any error, omission or mis-statement. This plan is for illustrative purposes only and should be used as such by any prospective purchaser. The services, systems and appliances shown have not been tested and no guarantee as to their operability or efficiency can be given.
Made with Metropix ©2026



Coming to the market for the first time in over 20 years, this fabulous home, presents a rare find. Situated in a hugely sought after area, in Woodford, this wonderful family home offers a superb opportunity to acquire a spacious family home, boasting wonderful open views, creating a sense of tranquillity and privacy. This property has been thoughtfully arranged over three floors, and boasts a versatile layout, suiting a variety of lifestyles.

The kitchen is positioned to the front of the property, and is well-appointed with ample storage and workspace, boasting a fabulous sociable space for both cooking and entertaining. The kitchen offers space for a dining table, whilst there is additional space for a larger dining area, in the room adjacent. To the rear of the property, there are two reception rooms, both offering stunning views to the back, of the picturesque outlook.

To the first floor of the property, there are four bedrooms, three of which are double, and a family bathroom. The family bathroom is currently fitted with a bath, with a shower over, a W/C and a wash hand basin. The master bedroom, situated to the rear of the property, presents a wonderful space for relaxation, boasting a Juliette balcony, offering a stunning outlook onto the open views. The master bedroom, also offers a recently renovated ensuite, fitted with a shower, wash-hand basin and W/C. The second and third bedrooms, both positioned at the front of the property, are adorned with natural light, and offer ample space for a double bed and storage. Additionally, there is an occasional loft room (accessed via a fixed staircase), fitted with storage and an ensuite, comprised of a shower, wash-hand basin and W/C.

Throughout this marvellous home, tasteful décor and well-maintained finishes create a welcoming atmosphere, while thoughtful touches such as built-in storage enhance practicality. To the front, the property also benefits from a detached garage, enhancing further storage space, along with off-road parking for 3+ cars and an electric charging point.

With gardens to both the front, and the rear of the property, this home, exhibits both gardens to the front and the rear of the property, primarily laid to lawn, with additional space for relaxation, on the recently installed composite decking. In 2011, the property had solar panels installed, contributing to excellent annual savings on bills. The property attracts feed in tariffs which currently equate to approximately £2000 per annum income. With its combination of generous living space, flexible accommodation, and a prime setting enjoying panoramic views, this home appeals to buyers seeking a blend of rural tranquillity and convenient access to local amenities, schools, and transport links.

PROPERTY MISDESCRIPTIONS ACT 1991 For clarification, Leighton Snow Agents wish to inform prospective purchasers, that we have not carried out a detailed survey, nor have we tested any of the appliances or heating system and cannot give any warranties as to their full working order. Purchasers are advised to obtain independent specialist reports if they have any doubts. All measurements are approximate and should not be relied upon for carpets or furnishings.

