



Fountain Drive, SE19 | £325,000

02087028111

[dulwichvillage@pedderproperty.com](mailto:dulwichvillage@pedderproperty.com)

**pedder**  
We live local





# In General

- A stunning top floor purpose built apartment
- Located in close proximity to Dulwich Village and Crystal Palace
- One generous double bedroom
- Lounge/dining room
- Re-fitted kitchen and bathroom
- Double length garage en-bloc
- Off street parking and communal garden
- Beautifully presented throughout

# In Detail

A beautifully modernised one-bedroom apartment with garage, located between Dulwich and Crystal Palace.

Situated on the second floor of the well-maintained Hogarth Court development, this stylish purpose-built, top floor flat has been upgraded by the current owner to an extremely high standard creating a beautifully presented interior.

Set back from Fountain Drive, the accommodation comprises one generous double bedroom, bright living/dining room, inbuilt storage spaces and wardrobes, and a completely refurbished contemporary kitchen and bathroom. Additional benefits include well-kept communal gardens, off street parking and a double length en-bloc garage.

Situated on the border of the popular Dulwich Village and Crystal Palace areas, Hogarth Court offers easy access to shops, cafes, restaurants, sports and leisure facilities, excellent schools and many green spaces including Dulwich Woods, Dulwich Park and Crystal Palace Park. Multiple transport options are available within walking distance, including Sydenham Hill, Crystal Palace and Gipsy Hill stations with fast rail links to Victoria, London Bridge, Blackfriars and London Overground lines with tube connections.

An internal viewing of this stylish apartment is advised.

EPC: D | Council Tax Band: C | Lease: 131 years remaining | GR: Nil | SC: £714 / annum | BI: £521

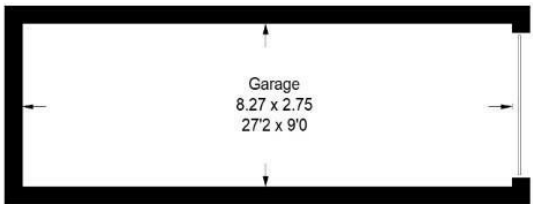




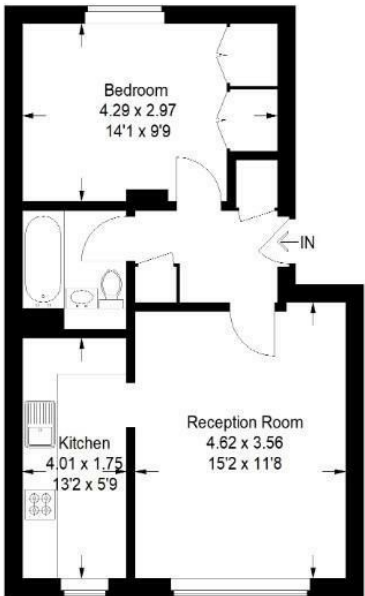
# Floorplan

## Hogarth Court, SE21

Approximate Gross Internal Area  
45.7 sq m / 492 sq ft  
Garage = 22.9 sq m / 246 sq ft  
Total = 68.6 sq m / 738 sq ft

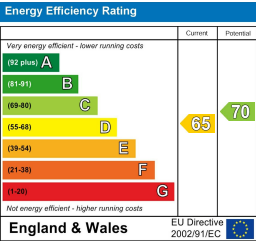


(Not Shown In Actual  
Location / Orientation)



## Second Floor

Copyright www.pedderproperty.com © 2025  
These plans are for representation purposes only as defined  
by RICS - Code of Measuring Practice. Not drawn to Scale.  
Windows and door openings are approximate. Please  
check all dimensions, shapes and compass bearings  
before making any decisions reliant upon them.



Pedder Property Ltd trading as Pedder for themselves and for the vendor/landlord of this property whose agents they are, give notice that (1) these particulars do not constitute any part of an offer or contract, (2) all statements contained within these particulars are made without responsibility on the part of Pedder or the vendor/landlord, (3) whilst made in good faith, none of the statements contained within these particulars are to be relied upon as a statement of representation or fact, (4) any intending purchaser/tenant must satisfy him/herself by inspection or otherwise as to the correctness of each of the statements contained within these particulars, (5) the vendor/landlord does not make or give either Pedder or any person in their employment any authority to make or give representation or warranty whatsoever in relation to this property.