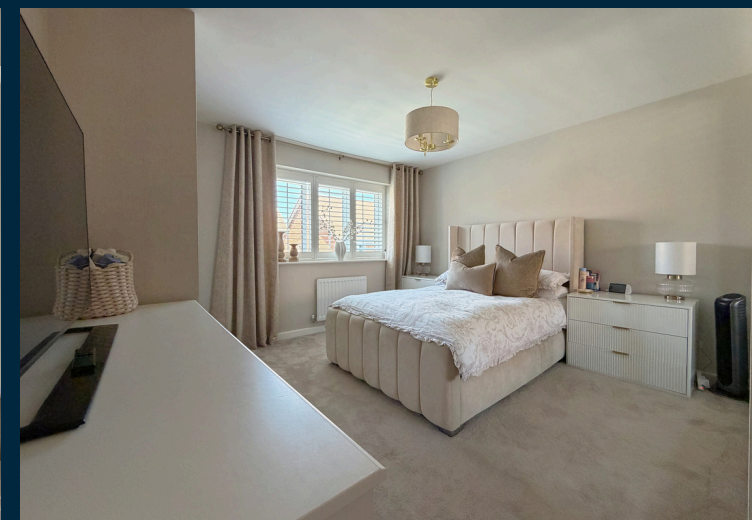




Figgie Road

West Malling | ME19 4XL

REYNOLDS
ESTATES LIMITED
— exp —



Welcome to Fuggle Road - a small cul-de-sac of just eleven properties, constructed in 2021 by renowned builders, Crest Nicholson.

This impressive family home offers impeccably presented accommodation extending to over 1,500 sq. ft., providing generous space for everyone to enjoy. At its heart lies the beautifully enhanced kitchen, upgraded by the current owners and open plan to the dining and family area - an ideal setting for entertaining friends and family. A separate living room with a bespoke media wall offers a wonderful retreat for quieter moments, while an additional reception room provides superb flexibility as a home office, playroom or snug.

Upstairs, all four bedrooms are excellent sizes, each comfortably able to accommodate a double bed. Both the principal bedroom and bedroom two benefit from private ensuite shower rooms, complemented by a modern family bathroom to complete the layout.

Externally, the home continues to stand apart from many modern builds. There is ample private parking courtesy of a multi-vehicle driveway and car port, while one of the property's standout features is the truly impressive South East facing landscaped garden, a beautifully designed outdoor space that provides a stunning backdrop for relaxing, entertaining or simply enjoying time with the family.



Ground Floor

Entrance Hall

Cloakroom

Living Room - 16'7 x 11'7

Home Office / Play Room - 10'7 x 8'6

Open plan Kitchen / Dining / Family Room - 27'9 x 10'5

Utility Room

First Floor

Landing

Master Bedroom - 13'9 x 12'4 max

Ensuite

Bedroom2 - 15'6 max x 11'6 max

Ensuite

Bedroom3 - 12'11 x 8'10

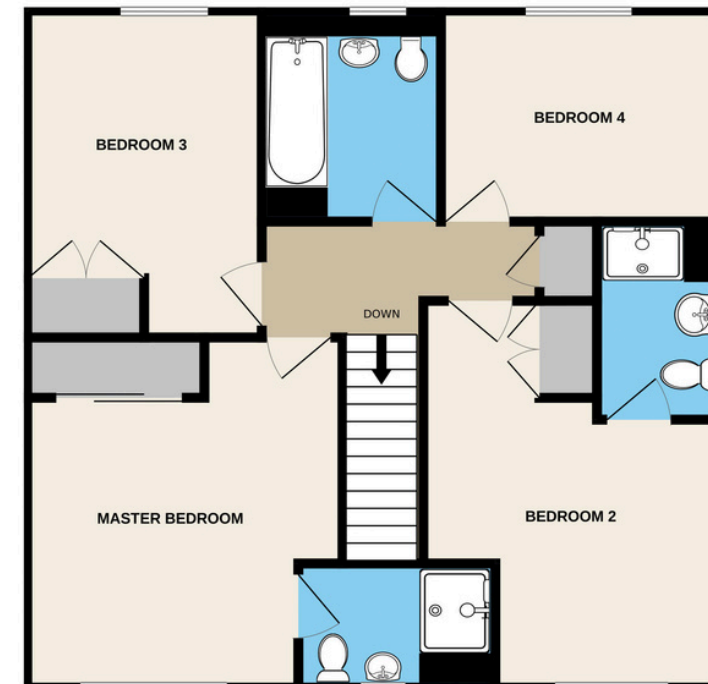
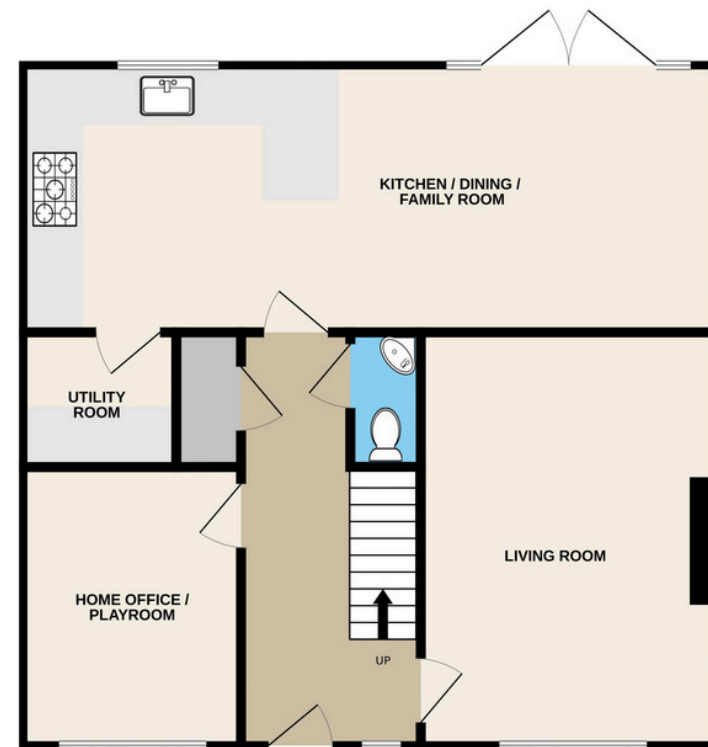
Bedroom4 - 11'3 x 8

Bathroom

Exterior

Multi Vehicle Driveway With Car Port

Beautiful Landscaped Garden





01732 647009



@sreynoldsrealestate