

## Bramble Way, Wymondham, NR18

Offers In Region Of £300,000

3 2 2

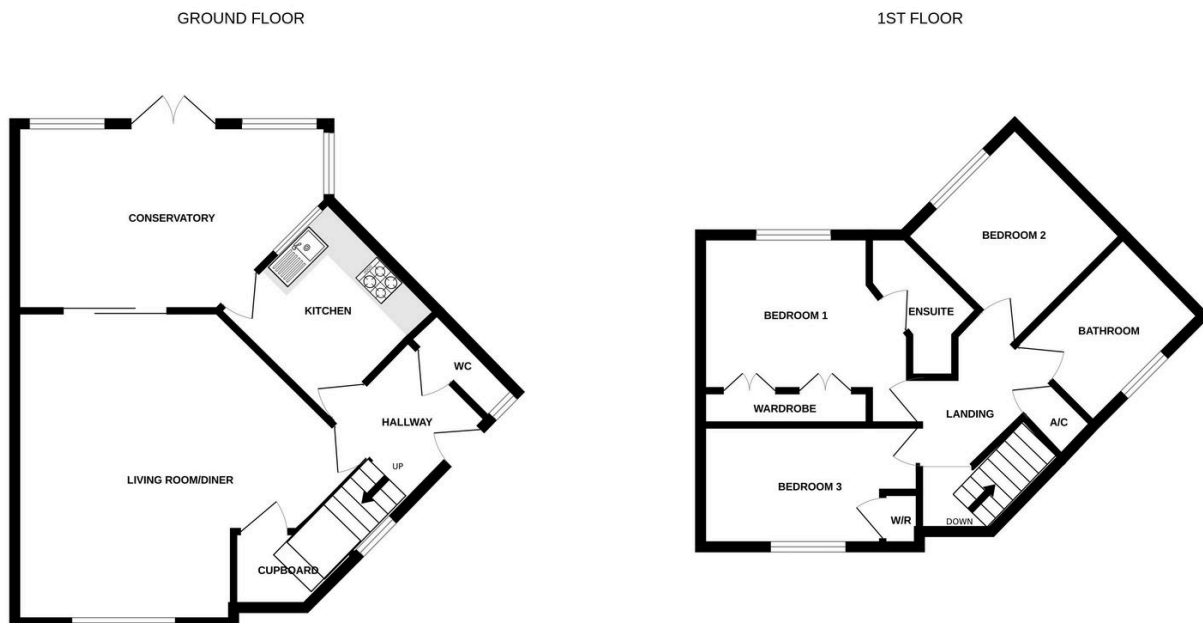


Moneyproperties bring to market this spacious three-bedroom semi-detached house located on the popular Harts Farm development within close proximity to the local train station, supermarkets, and Wymondham town centre. With generous living accommodation throughout the property comprises of an entrance hall, 19ft living room/diner, kitchen, good-sized conservatory and downstairs wc. To the upstairs comes three well-proportioned bedrooms with built in wardrobes, ensuite to bedroom one and a family bathroom off the landing. Mature fully enclosed rear garden with a patio seating area, single garage and off-road parking for 2 cars.

**Tenure: Freehold EPC: D Council Tax: C**

## Key Features

- Spacious three bedroom semi-detached house
- 19ft open plan living room/diner
- Three well-proportioned bedrooms with an ensuite and built in wardrobes to bedroom one
- Single garage with off-road parking for 2 cars
- Ideally located for access to everything that Wymondham has to offer
- Located on the popular Harts Farm development, set back from the road
- Good-sized conservatory overlooking the garden
- Mature private rear garden with a patio seating area and summer house
- Within close proximity to the local train station, supermarkets and the town centre
- See our full online listing for further details including flood risk, broadband speed and other material information.



BRAMBLE WAY

Whilst every attempt has been made to ensure the accuracy of the floorplan contained here, measurements of doors, windows, rooms and any other items are approximate and no responsibility is taken for any error, omission or mis-statement. This plan is for illustrative purposes only and should be used as such by any prospective purchaser. The services, systems and appliances shown have not been tested and no guarantee as to their operability or efficiency can be given.  
Made with Metropix ©2025