



Weir Road, SW12

£795,000

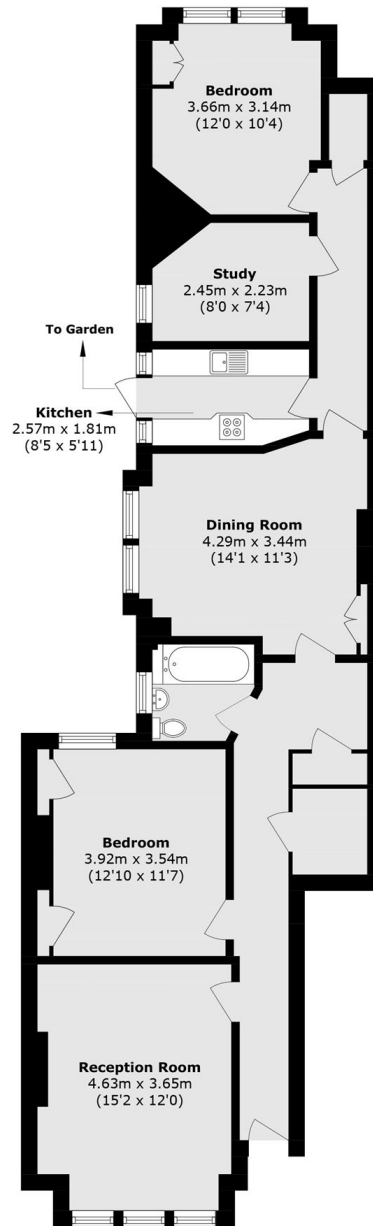
A spacious purpose built maisonette on a popular street near Balham with its own front door, three bedrooms, garden and a flexible layout.

This great property is located on Weir Road, equidistant from both Clapham South and Balham Stations and within close proximity of Balham High Street, as well as Tooting Bec Common by Emmanuel Road.

Features

- Over 1000 sq ft
- Own Front Door
- Formal Reception
- Three Bedrooms
- New Lease
- Garden

Weir Road, London, SW12



Total area (approx): 96.5 sq. m (1038.7 sq. ft)