



ISLINGTON PROPERTIES



## Cloudesley Place

Islington, N1

£2,300 Per Month

£2,653 Deposit

Available from: 6th August 2026

A well presented apartment on the second floor of an imposing, Victorian mansion block in a prime location just off Cloudesley Square and a short walk to the Angel. The apartment has a southerly aspect and has excellent light and comprises one bright double bedroom, lounge, separate kitchen and stylish bathroom with slate tiled floor.

- Prime location near Angel
- Close to all amenities
- Bright and airy
- One Bedroom Apartment
- Furnished
- Great transport links
- Council Tax: C

### Viewing

Please contact our Upper Street Office on 020 7871 4444 if you wish to arrange a viewing appointment for this property or require further information.



## Additional Information

Heating: Gas Central Heating

Electricity: Mains

Water: Mains

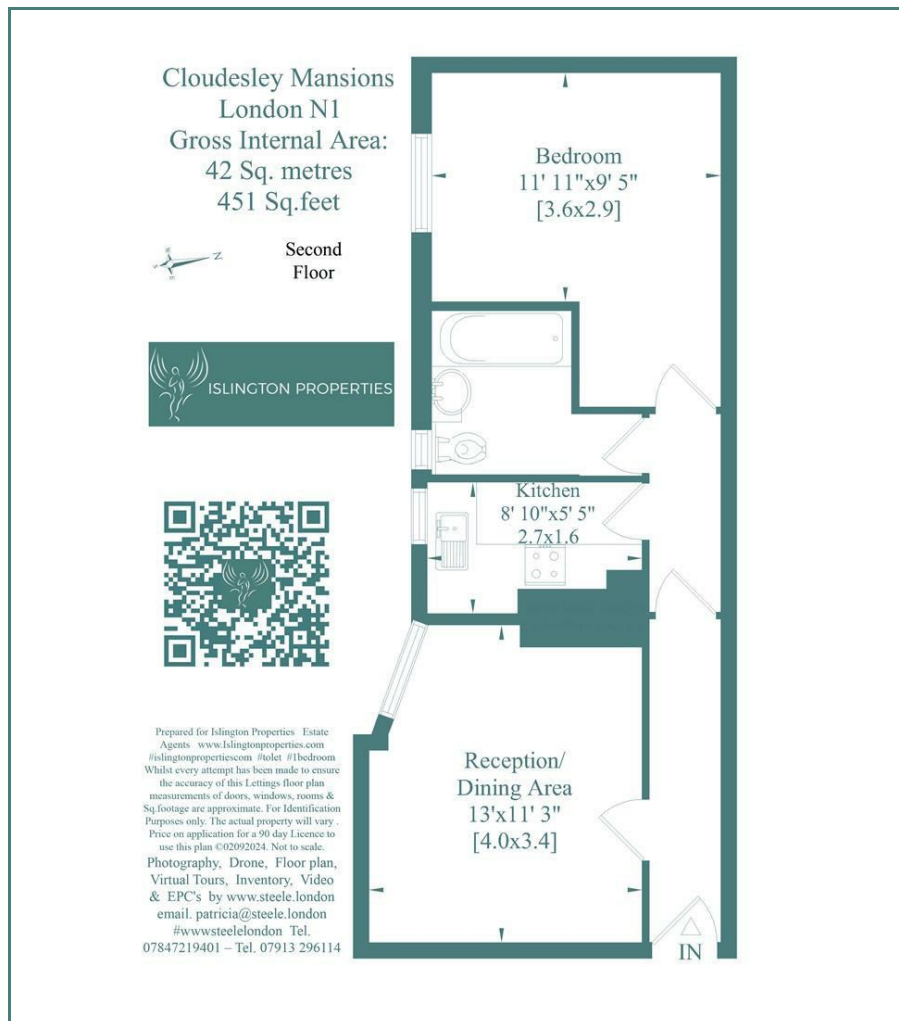
Sewerage: Mains

Broadband: Predicted Standard, Superfast, Ultrafast (Ofcom)

Mobile signal/coverage: Predicted good coverage indoor/outdoor for Three, O2, Vodafone. Good coverage outdoor for EE (Ofcom)

Parking: By Street permit

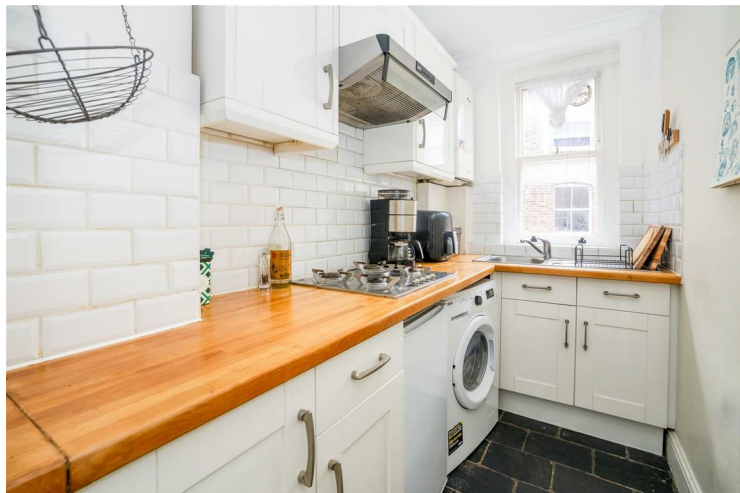
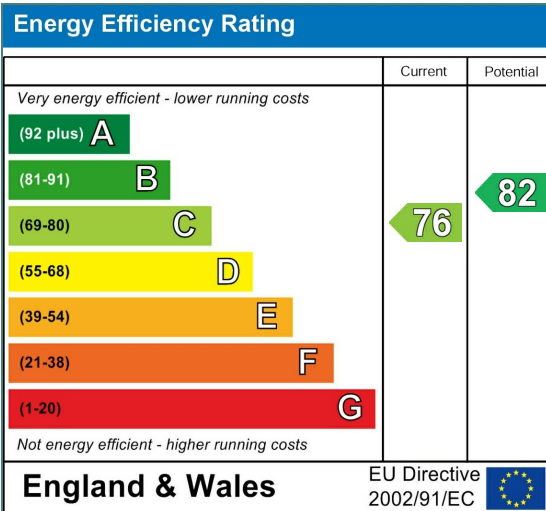
## Floor Plan



## Area Map



## Energy Efficiency Graph



These particulars, whilst believed to be accurate are set out as a general outline only for guidance and do not constitute any part of an offer or contract. Intending purchasers should not rely on them as statements of representation of fact, but must satisfy themselves by inspection or otherwise as to their accuracy. No person in this firm's employment has the authority to make or give any representation or warranty in respect of the property. Council Tax and tenancy information should be confirmed with the Lettings Manager prior to the signature of the tenancy agreement.