



Springfield Drive, SW17

£385,000

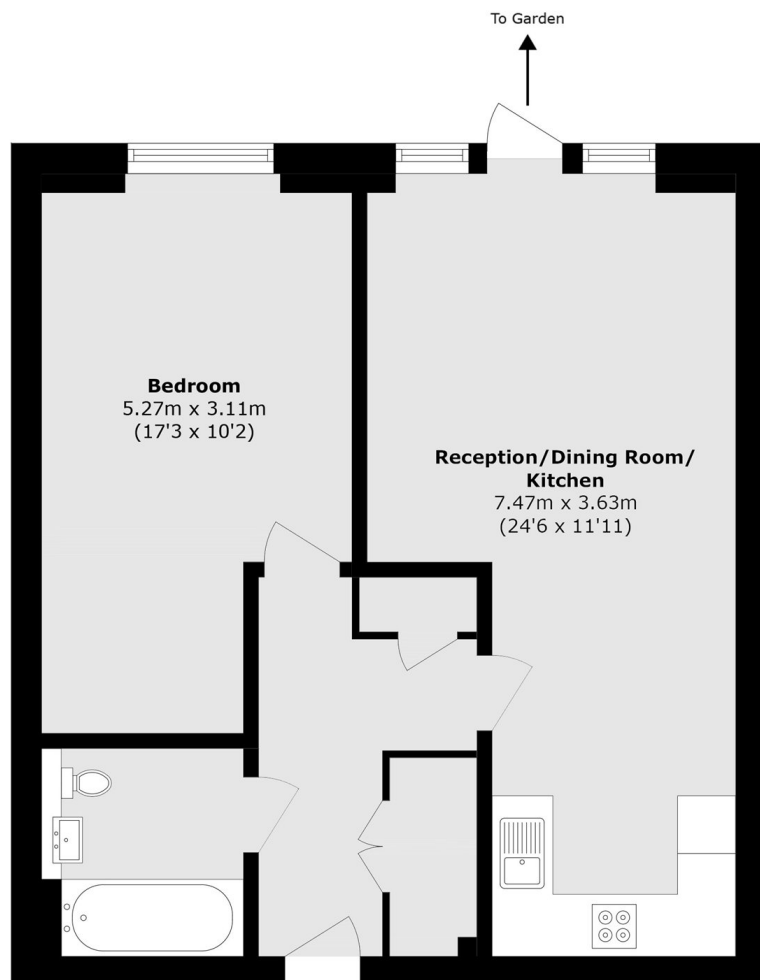
****OFFERS IN EXCESS OFF**** A stylish and modern apartment positioned in the highly desirable Springfield Place development with a stunning open-plan kitchen/reception room with ample space for dining, a large double bedroom and a private garden area.

Springfield Drive sits within the highly desirable Springfield Place development, nestled conveniently between the popular neighbourhoods of Earlsfield, Tooting Bec and Wandsworth Common, all offering fantastic transport links into Central London via the tube and multiple overground Stations. A gym, Sainsbury's Local, nursery and cafe are set within the grounds of Springfield Place as well as the vast array of shops, restaurants and pubs on Earlsfield and Tooting High St. A new 32-acre park alongside the green spaces of Wandsworth common are only a short stroll away.

Features

- One Double Bedroom
- Private Garden
- Springfield Place Development
- Communal Grounds
- Desirable Location
- Open-Plan Kitchen/Reception Room

Springfield Drive, London, SW17



Total area (approx.): 52.8 sq. m (568.3 sq. ft)