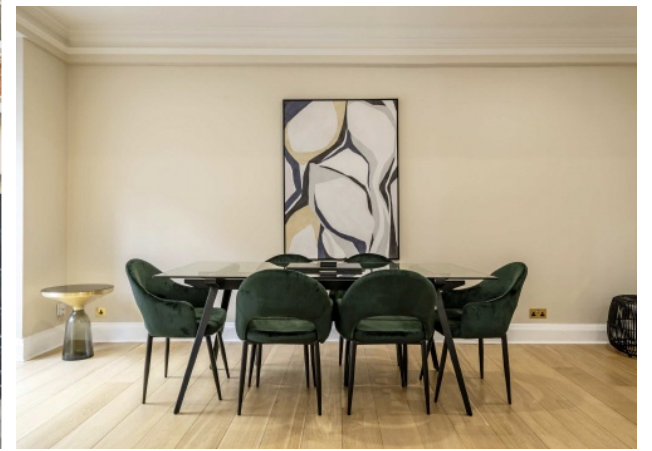




# WOODS MEWS

MAYFAIR W1K



A ONE BEDROOM APARTMENT WITH PRIVATE BALCONY IN A PEACEFUL MAYFAIR MEWS.



Total area: approx. 93.7 sq. metres (1008.2 sq. feet)

A one bedroom apartment with private balcony in a peaceful Mayfair Mews. This second floor flat has a large reception leading onto a private balcony toward the rear of the building. The double bedroom comes with ample fitted storage.

Woods Mews is set in a quiet residential street located to the east of Hyde Park and to the north of Piccadilly.

#### FEATURES

- Spacious Double Bedroom
- Recently Renovated
- Quiet Mews
- Private Balcony
- Large Reception
- Secure Entry Systems

Price: £1,250 Per week

We aim to make our particulars both accurate and reliable. However they are not guaranteed; nor do they form part of an offer or contract. If you require clarification on any points then please contact us, especially if you're traveling some distance to view. Please note that appliances and heating systems have not been tested and therefore no warranties can be given as to their working order. Energy Rating: C



**WETHERELL**  
MAYFAIR'S FINEST PROPERTIES

102 Mount Street • London • W1K 2TH  
T: 020 7529 5588 E: rentals@wetherell.co.uk

wetherell.co.uk

NO ONE KNOWS MAYFAIR BETTER THAN WETHERELL