

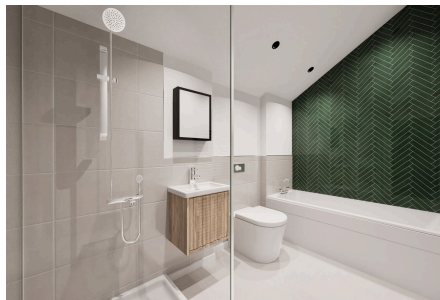


HOMES BY VICTORIA  
ESTATE AGENCY

## Plot 1 - Castle View, Alcester Road, Studley, B80 7PD

Offers In Region Of £595,000

🛏 3 🍳 2 🛋 1



**Step into a world where heritage meets modern living, welcome to Castle View Barns – An exclusive new development on the outskirts of Studley village, offering just eight beautifully converted Victorian brick barns. With characterful exteriors and thoughtfully designed interiors, these homes capture the perfect balance of timeless charm and contemporary elegance.**

[homesbyvictoria.co.uk](https://www.homesbyvictoria.co.uk)

[victoria@homesbyvictoria](mailto:victoria@homesbyvictoria) | 07833 136521

FOR M HOMES MIDLANDS LIMITED trading as Homes By Victoria Company Number: 13688840 VAT no: 470190115

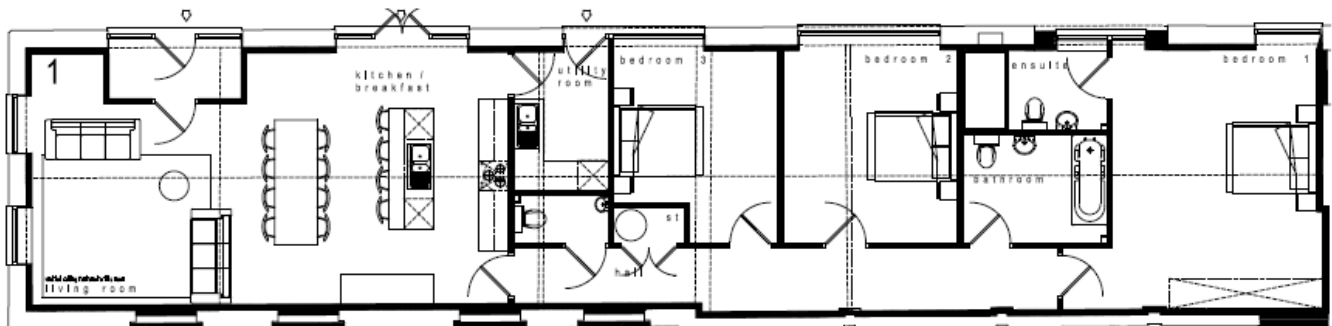


HOMES BY VICTORIA  
ESTATE AGENCY



## Key Features

- CASTLE VIEW BARNES IN THE HEART OF STUDLEY
- VICTORIAN BRICK AND HIGH SPECIFICATION INTERIOR
- THREE BEDROOMS
- PRINCIPLE BATHROOM WITH PORCELANOSA TILING
- BLOCK PAVED OFF ROAD PARKING
- LUXURIOUS ELECTRONIC GATED DEVELOPMENT
- OPEN PLAN LIVING
- MASTER BEDROOM WITH EN-SUITE
- RADIATING CHARACTER, CHARM AND CONTEMPORARY ELEGANCE
- PRIVATE LANDSCAPED GARDENS



(Ground Floor)

### **Plot 1**

Living / Kitchen / Breakfast = 11.60m x 5.00m

Utility = 1.85m x 2.80m

WC = 1.90m x 0.95m

Bedroom 1 = 5.20m x 5.20m

Bedroom 2 = 3.50m x 3.90m

Bedroom 3 = 3.40m x 3.90m

Bathroom = 2.90m x 2.20m

Ensuite = 2.90m x 1.55m

Total GIFA = 135m<sup>2</sup> / 1,453ft<sup>2</sup>