



EATON PLACE

London SW1X



EATON PLACE

An extremely rare first floor apartment, laterally converted across two prestigious white stucco fronted buildings in a premier Belgravia location.



4



3



2

EPC

C

Local Authority: Royal Borough of Kensington and Chelsea

Council Tax band: H

Tenure: Share of Freehold with approximately 982 years remaining

Service charge: £24,893 annum, reviewed every year, next review due 2027

Guide Price: £8,950,000



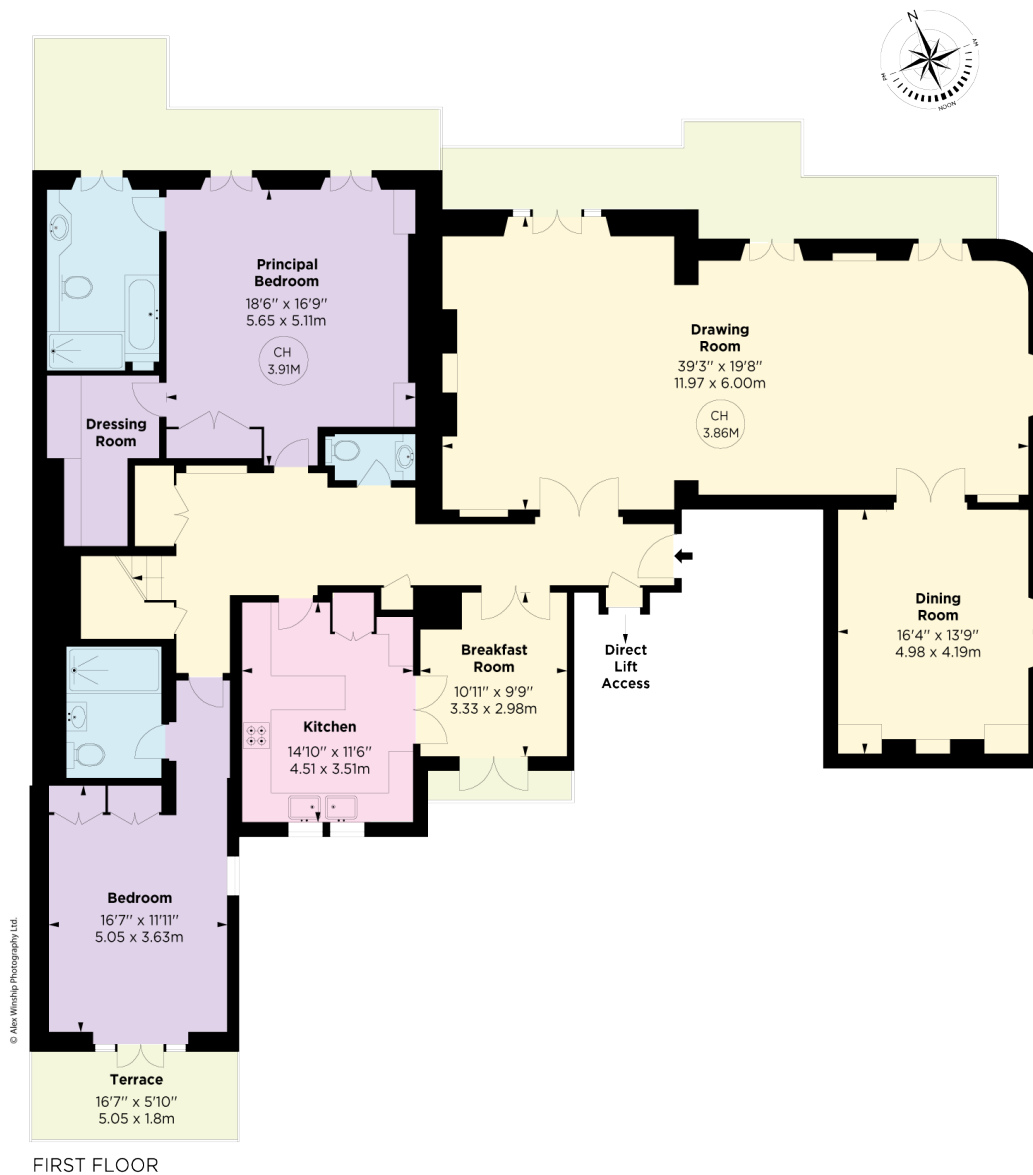
This exceptional property has very good ceiling heights and large floor to ceiling windows in the principal rooms. The impressive double reception room has unusual views down towards Eaton Square and an adjoining dining room to the rear. In addition to the voluminous principal bedroom suite with dressing room, there are three further double bedrooms and two bathrooms. This property, which has air conditioning, further benefits from having direct lift access and a resident caretaker in the building of which it has a share of the freehold.

Eaton Place is conveniently located in the centre of Belgravia near the international amenities of Sloane Square and Knightsbridge. Hyde Park is approximately half a mile away, offering walks and other outside recreational activities.









Eaton Place, SW1

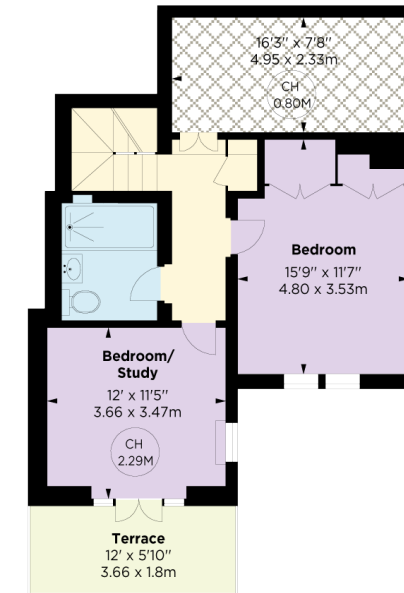
APPROX. GROSS INTERNAL AREA *
2867 Sq Ft - 266.37 Sq M
(Excluding Under 1.5m Area)

APPROX. UNDER 1.5M AREA *
124 Sq Ft - 11.61 Sq M

TOTAL APPROX. GROSS INTERNAL AREA *
2992 Sq Ft - 277.98 Sq M

This floorplan is for GUIDANCE ONLY
and NOT FOR VALUATION purposes.

Key :
CH - Ceiling Height
⊗ - Under 1.5m



SECOND FLOOR

Approximate Gross Internal Area = 277.99 sq m / 2992 sq ft

This plan is for layout guidance only. Not drawn to scale unless stated. Windows and door openings are approximate. Whilst every care is taken in the preparation of this plan, please check all dimensions, shapes and compass bearings before making any decisions reliant upon them. (ID767266)

We would be delighted
to tell you more.

Bertie Hare

+44 2078817721

bertie.hare@knightfrank.com

Belgravia Sales

47 Lower Belgrave Street

SW1W 0LS

[knightfrank.co.uk](https://www.knightfrank.co.uk)

Your partners in property

1. Particulars: These particulars are not an offer or contract, nor part of one. You should not rely on statements given by Knight Frank in the particulars, by word of mouth or in writing ("information") as being factually accurate about the property, its condition or its value. Neither Knight Frank nor any joint agent has any authority to make any representations about the property, and accordingly any information given is entirely without responsibility on the part of Knight Frank. 2. Material Information: Please note that the material information is provided to Knight Frank by third parties and is provided here as a guide only. While Knight Frank has taken steps to verify this information, we advise you to confirm the details of any such material information prior to any offer being submitted. If we are informed of changes to this information by the seller or another third party, we will use reasonable endeavours to update this as soon as practical. 3. Photos, Videos etc: The photographs, property videos and virtual viewings etc. show only certain parts of the property as they appeared at the time they were taken. Areas, measurements and distances given are approximate only. 4. Regulations etc: Any reference to alterations to, or use of, any part of the property does not mean that any necessary planning, building regulations or other consent has been obtained. A buyer must find out by inspection or in other ways that these matters have been properly dealt with and that all information is correct. 5. Fixtures and fittings: A list of the fitted carpets, curtains, light fittings and other items fixed to the property which are included in the sale (or may be available by separate negotiation) will be provided by the Seller's Solicitors. 6. VAT: The VAT position relating to the property may change without notice. 7. To find out how we process Personal Data, please refer to our Group Privacy Statement and other notices at <https://www.knightfrank.com/legals/privacy-statement>.

Particulars dated May 2024. Photographs and videos dated May 2024. All information is correct at the time of going to print. Knight Frank is the trading name of Knight Frank LLP. Knight Frank LLP is a limited liability partnership registered in England and Wales with registered number OC305934. Our registered office is at 55 Baker Street, London W1U 8AN. We use the term 'partner' to refer to a member of Knight Frank LLP, or an employee or consultant. A list of members names of Knight Frank LLP may be inspected at our registered office. If you do not want us to contact you further about our services then please contact us by either calling 020 3544 0692, email to marketing.help@knightfrank.com or post to our UK Residential Marketing Manager at our registered office (above) providing your name and address.