



Champion Hill | London | SE5 8TQ

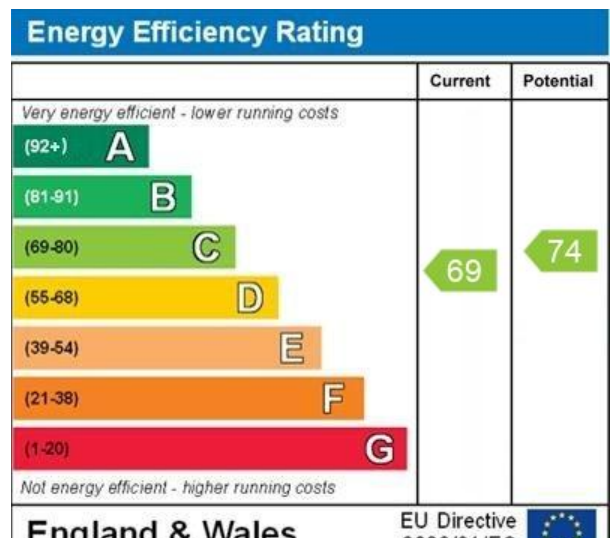
Leasehold

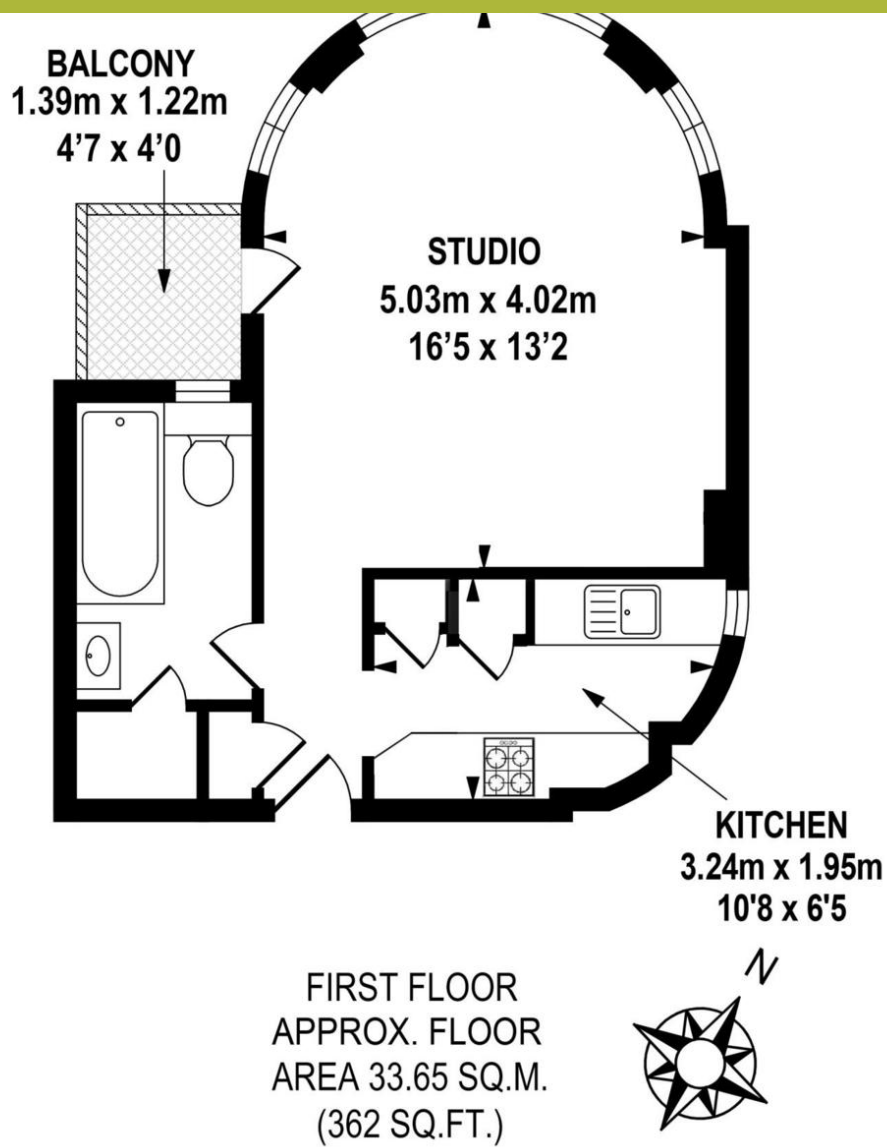
£300,000

- Spacious Studio
- Open plan
- Modern Kitchen
- Communal gardens
- Share in freehold company
- Denmark Hill Station
- Ruskin Park
- Local amenities
- First floor
- Herne Hill



A beautiful studio apartment on the first floor of Ruskin Park House. The living room benefits from plenty of natural light from the large bay window. There is a separate modern kitchen with integrated appliances and bathroom. Parking spaces, garages and storage units are available to rent onsite. Easy walking distance to Denmark Hill Station, King's College Hospital and Ruskin Park. Close to Herne Hill with its village market and lively Peckham and Brixton. Share of freehold company, long lease, service charge £138 per month





Viewing Arrangements

Strictly by appointment

Contact Details

121 Denmark Hill

London

SE5 8EN

www.urbanvillagehomes.co.uk

sales@urbanvillagehomes.com

020 3519 9121

Agents Note: Whilst every care has been taken to prepare these sales particulars, they are for guidance purposes only. All measurements are approximate are for general guidance purposes only and whilst every care has been taken to ensure their accuracy, they should not be relied upon and potential buyers are advised to recheck the measurements