

Radford Boulevard, Nottingham
£3,368 pcm

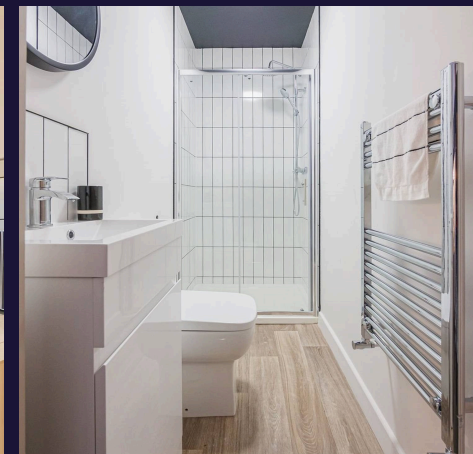
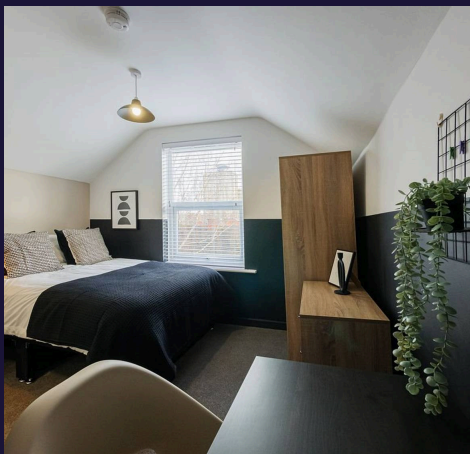


Radford Boulevard

Nottingham, Nottingham

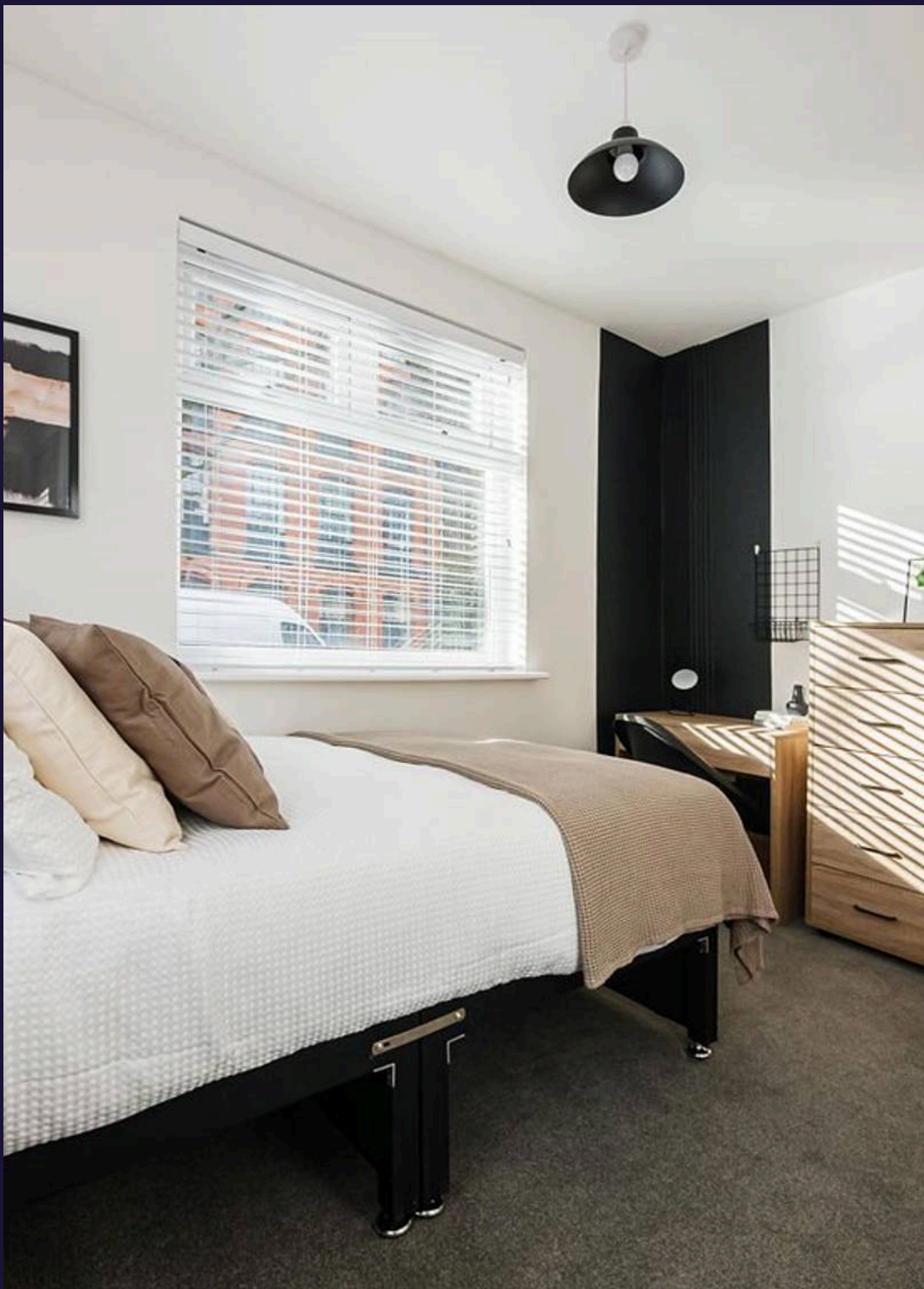
Within walking distance and close to great transport links to both the University of Nottingham and Nottingham Trent, as well as easy access to the city centre, this property combines stylish interiors with convenience for your student living. Within 5 minutes walking distance to the Castle Retail Park that includes a gym and supermarkets such as B&M, the Range and Aldi, this location is perfect for affordable and accessible student living.

Recently renovated with bespoke design throughout, this stylish 6-bedroom student property (also available for groups of five) features 4 modern bathrooms for maximum convenience. The shared living space and kitchen come fully furnished and equipped with appliances. All bedrooms are beautifully designed with a modern touch and are furnished with double beds, a desk, bedside table and wardrobe. 4 of the bedrooms have en-suites and 2 rooms share a bathroom.



Perfect for students who want to be in the heart of the action, with bars, restaurants, shops, and nightlife on your doorstep. Easy access to both universities and all major transport links.

Don't miss out on making this beautiful property your new home – book your viewing today!



Radford Boulevard

Nottingham, Nottingham

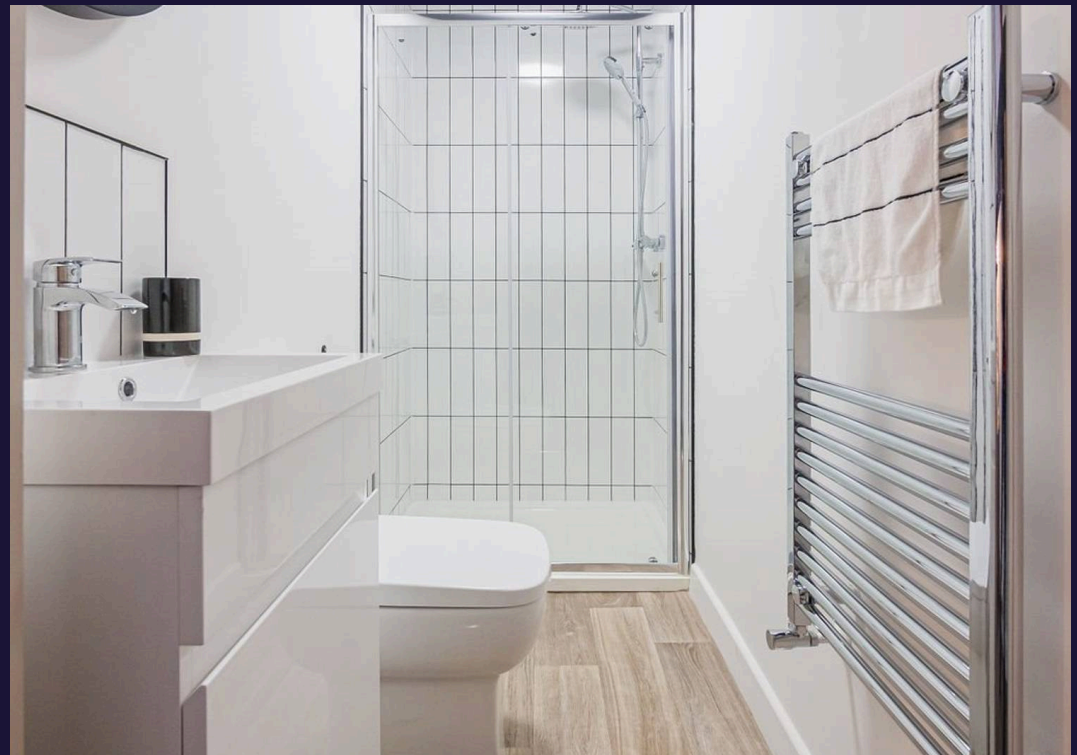
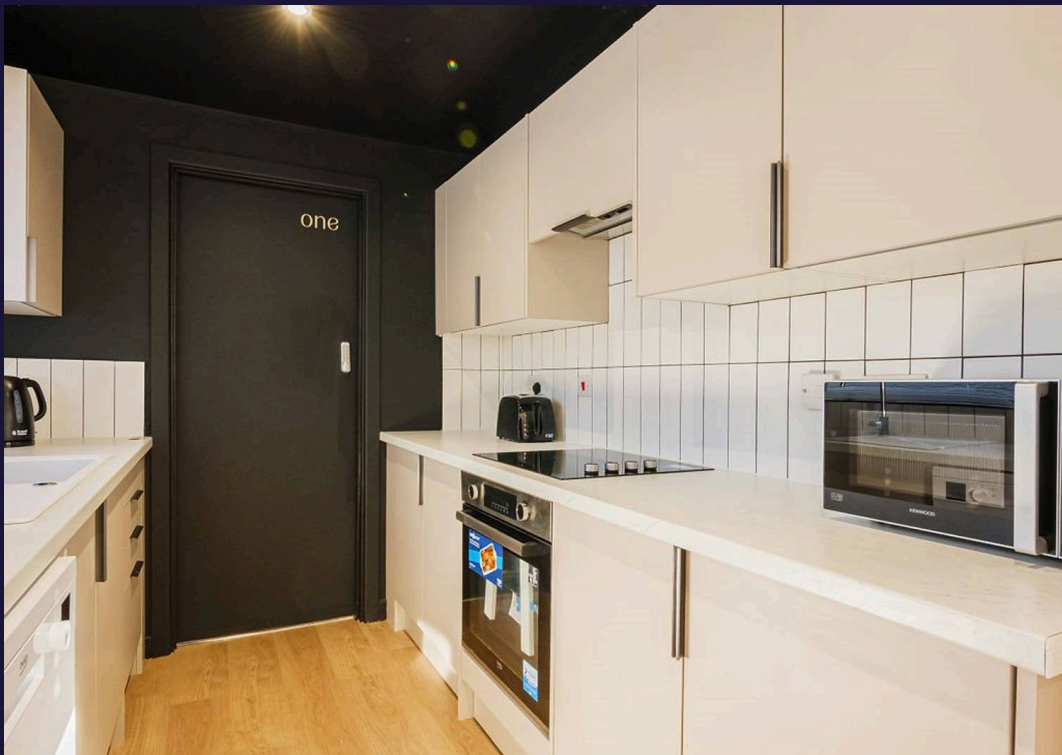
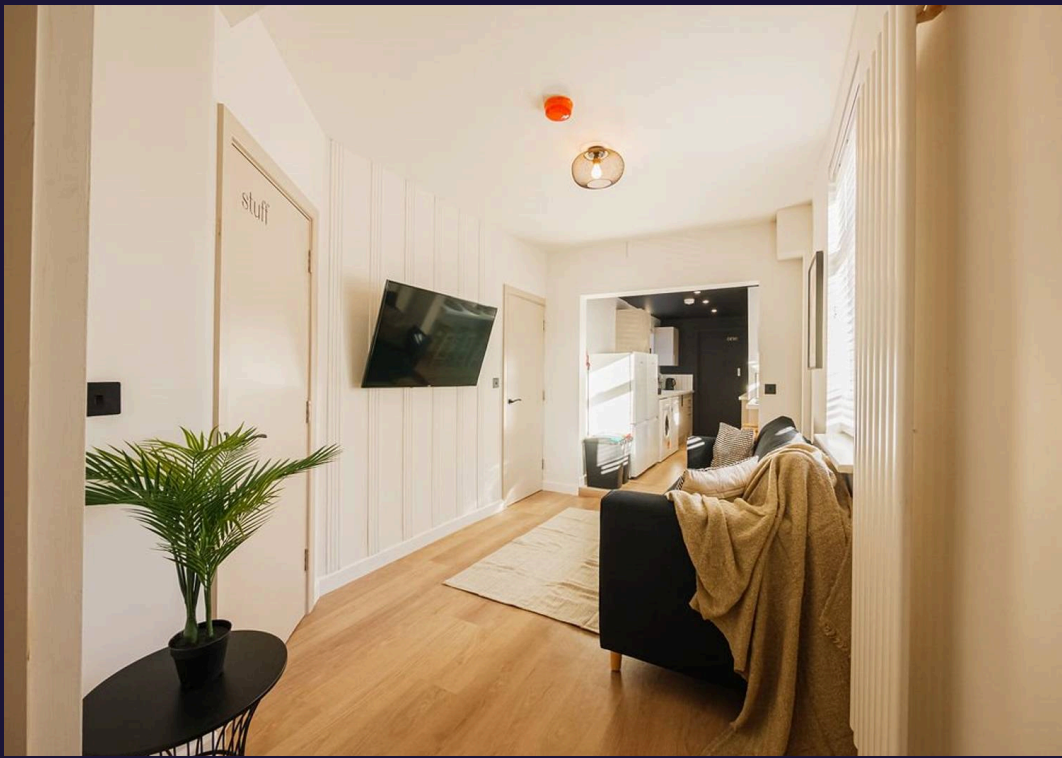
£154pppw | 6 Double Bedrooms | 5 Bathrooms | 4 Ensuite Bedrooms |
Contemporary Interiors | Video Tour | Walking Distance to both Universities
and Nottingham City Centre |
Council Tax band: A

Tenure: Freehold

EPC Energy Efficiency Rating: E

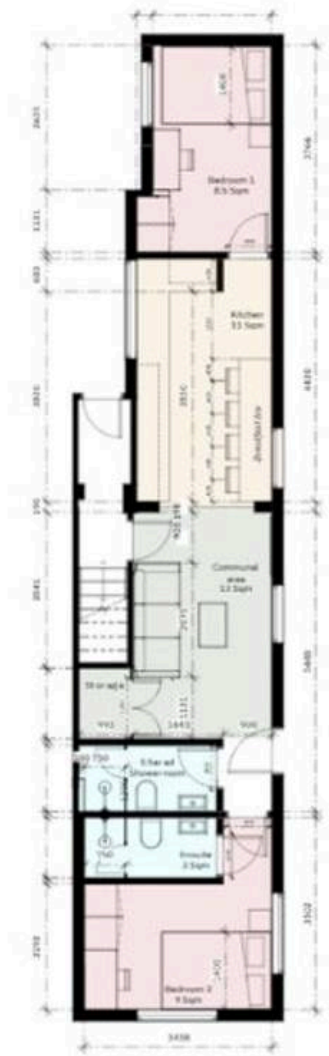
EPC Environmental Impact Rating: E

- Contemporary Interiors
- Fortnightly Clean of Communal Areas
- Four Ensuite Bedrooms
- Six Double Bedrooms
- Close to QMC and Both Universities
- Walking Distance to the City Centre
- 5-Minutes Walk to Castle Retail Park
- Bills Included Option Available





Comfort Estates



GROUND FLOOR PLAN



FIRST FLOOR PLAN



SECOND FLOOR PLAN



Comfort Estates

Comfort Estates, 47 Derby Road - NG1 5AW

0115 9338997 • info@comfortestates.co.uk • www.comfortestates.co.uk