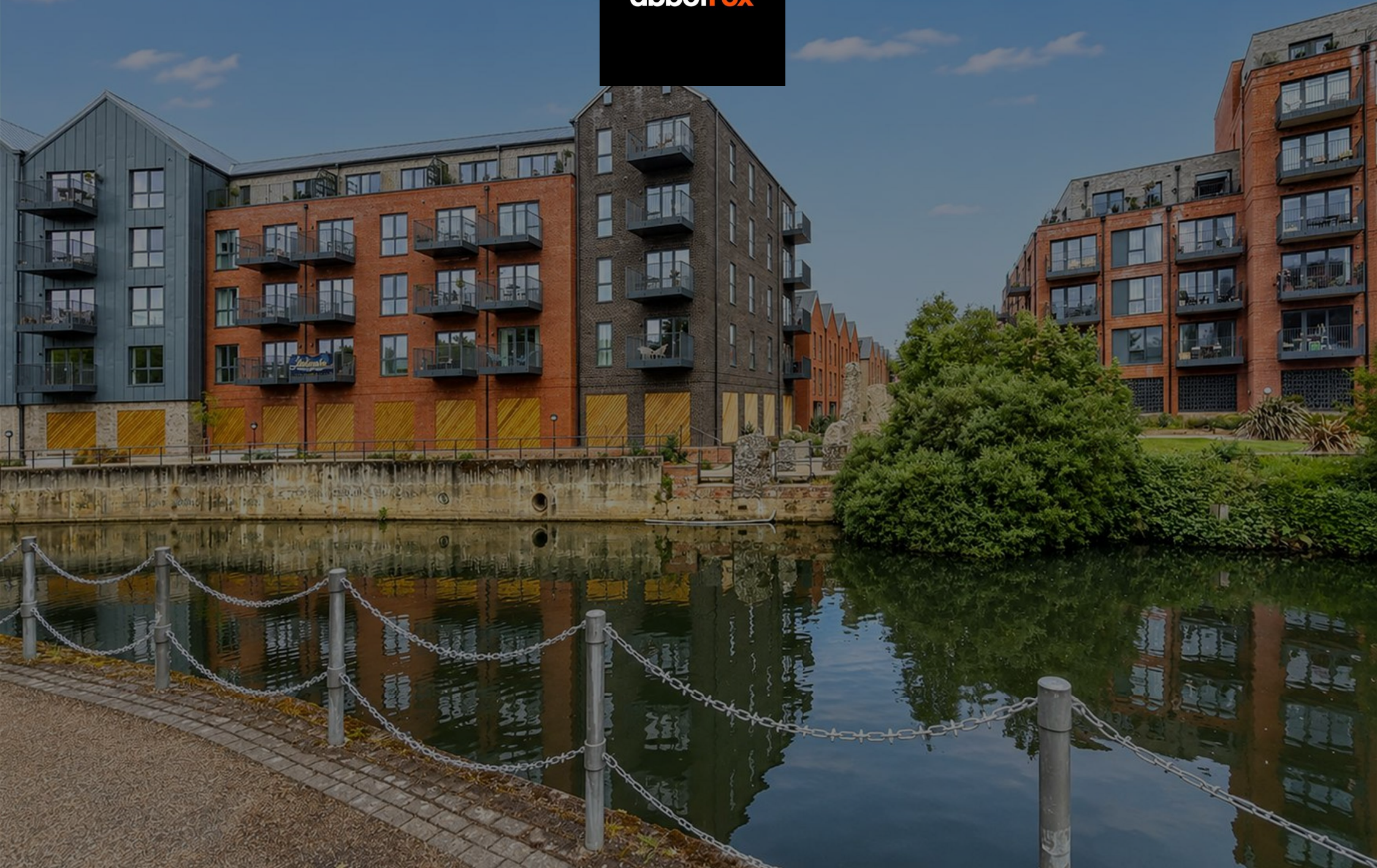


abbotFox



Printworks Drive, Norwich  
£350,000

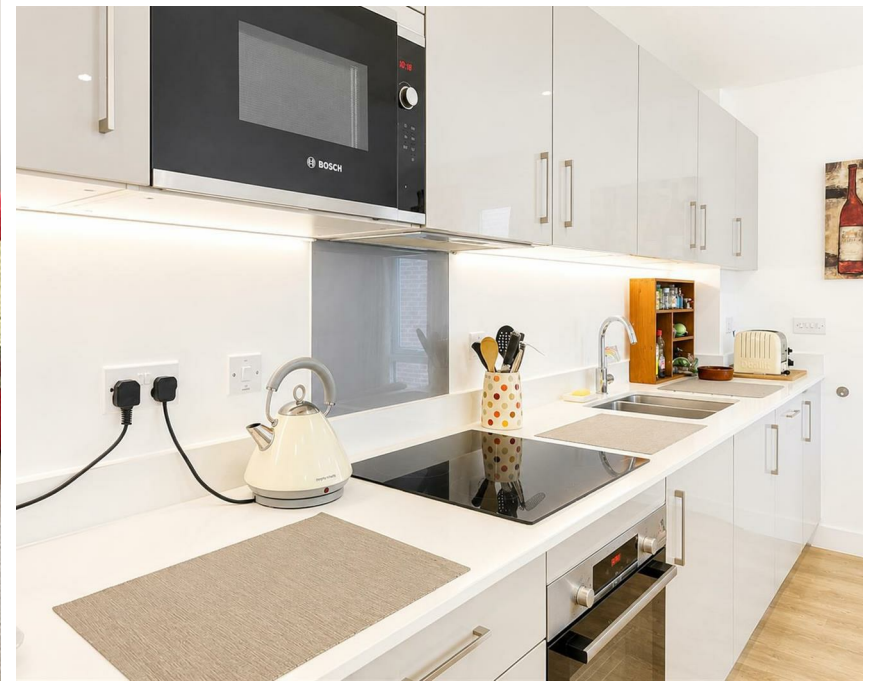
“

We are a team of genuine individuals who hold a deep passion for both property and marketing. Collectively, we bring over 70 years of experience in the property market of Norfolk and Suffolk. Our affection for both counties runs deep, and we are enthusiastic about sharing our passion with you.

Colin McKenzie | **Branch Partner**







## THE DETAIL \_\_\_\_\_

abbotFox presents this purpose-built two-bedroom apartment, ideally positioned to enjoy stunning views across the River Wensum.

### Accommodation

Neatly arranged around an inviting entrance hall, with utility area, this property offers, a spacious, dual aspect open plan living area completed with a high quality kitchen and access to a private balcony. Two double bedrooms, one furnished with an en-suite shower room and a family bathroom complete the accommodation.

### Location

Typesetters Way enjoys a highly convenient position close to Norwich City Centre, whilst offering a quieter riverside environment. The nearby River Wensum provides picturesque walks and green spaces, with local amenities, cafés and transport links all within easy reach. Norwich train station, the Riverside development and the historic city centre are all readily accessible, making this an excellent choice for those seeking both convenience and lifestyle.

### Families

Whilst perfectly suited to professionals and downsizers alike, the generous proportions and riverside setting also make this an appealing option for small families or those requiring flexible living space. Nearby schooling, open green spaces and easy access to the city's extensive amenities ensure this home offers practicality alongside its attractive setting.

### Our Agent's View

"This apartment stands out thanks to its impressive river views and excellent location. The combination of peaceful surroundings with easy access to Norwich city centre creates a fantastic balance, whilst the purpose-built design offers comfortable and practical accommodation throughout. Properties in this position are always highly sought after."



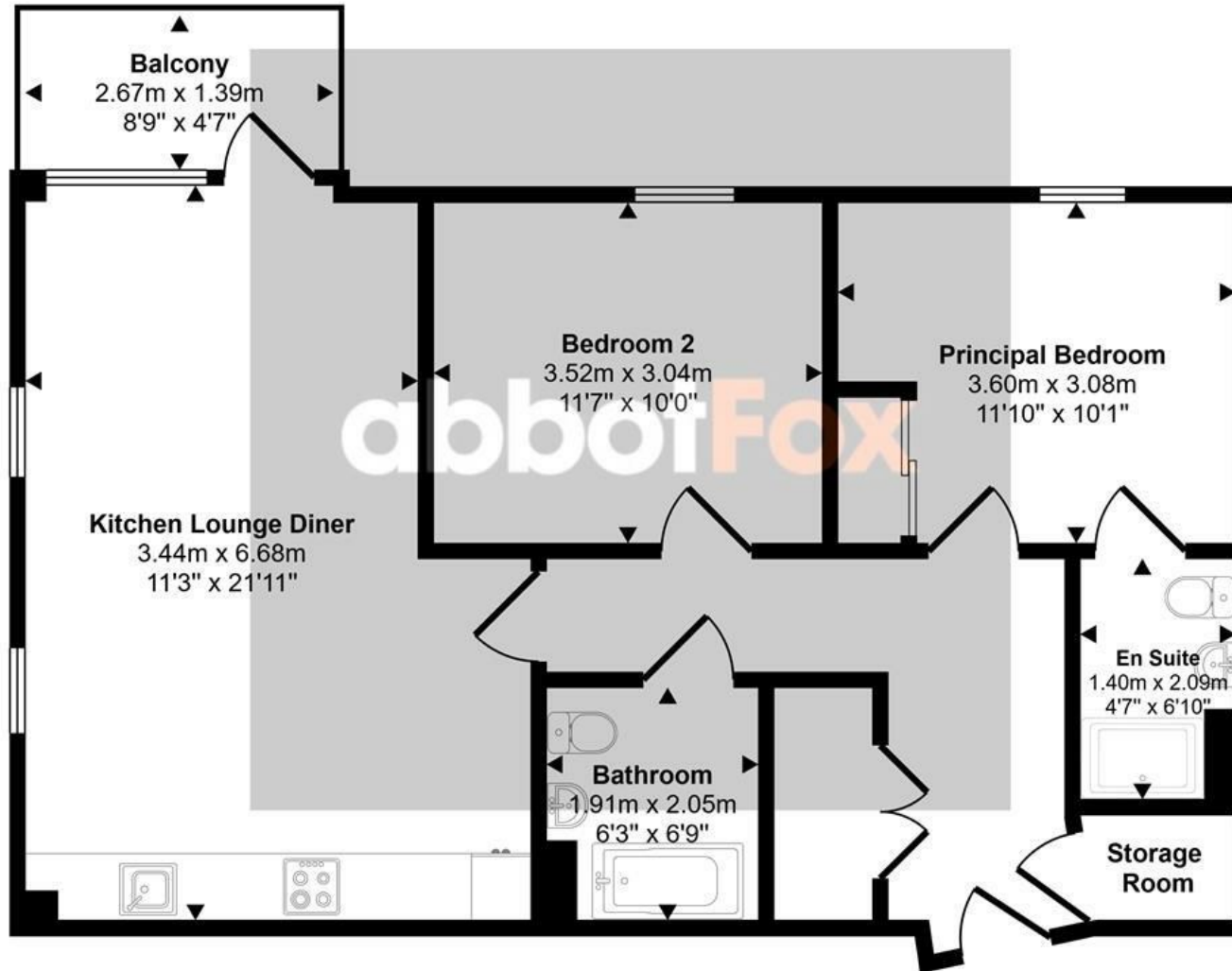




## THE HIGHLIGHTS \_\_\_\_\_

- Purpose built apartment
- River views
- Private balcony
- Two double bedrooms
- Generous open plan living accommodation
- Allocated parking
- Well maintained communal areas
- Pets allowed
- No onward chain
- Viewing advised

Approx Gross Internal Area  
72 sq m / 771 sq ft



Floorplan

*Let's talk*

01603 660000  
sales@abbotfox.co.uk  
@abbotfox

This floorplan is only for illustrative purposes and is not to scale. Measurements of rooms, doors, windows, and any items are approximate and no responsibility is taken for any error, omission or mis-statement. Icons of items such as bathroom suites are representations only and may not look like the real items. Made with Made Snappv 360.

EPC RATING - B

Disclaimer – In accordance with the Property Misdescriptions Act, the company abbotFox gives notice that all descriptions, references to condition, necessary permissions for use and other details are given in good faith and believed to be correct, but any purchaser should not rely on them as statements of fact, and must satisfy themselves by inspection or other means, as to their accuracy.