



LB

Loporto Browne

— RESIDENTIAL —

# Clanricarde Gardens, W2

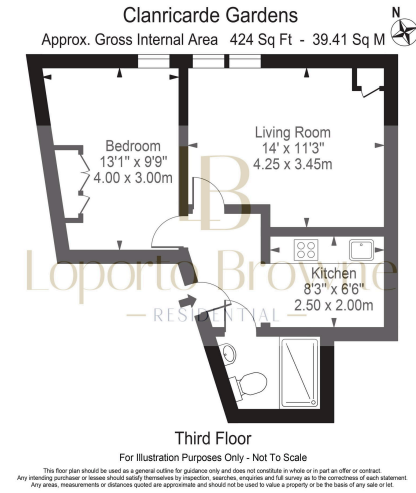
Offers Over £450,000

1 1 1



- Quiet cul-de-sac in Notting Hill, W11
- High ceilings
- Perfect for FTB, BTL or pied-a-terre
- Bright with natural sunlight
- Ideal 1 bedroom, 1 bathroom flat
- Separate kitchen
- Wooden floors
- 163 year lease

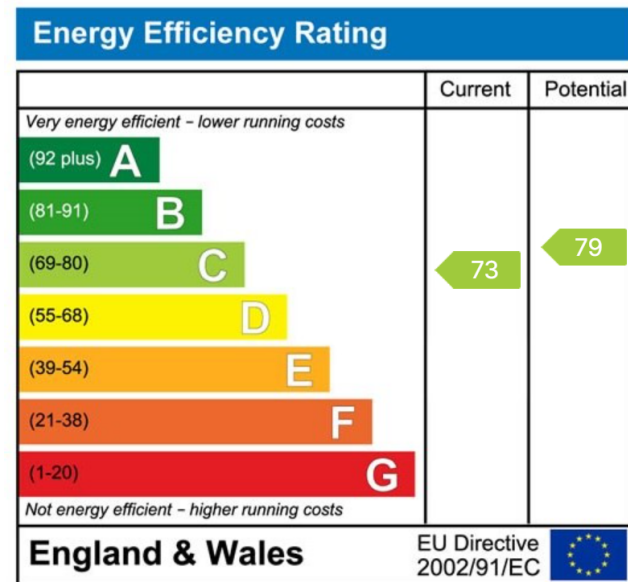




Elegant one bedroom flat nestled amongst the Victorian terraces of Clanricarde Gardens, Notting Hill.

This sunny apartment sits on the third floor of a quaint end-of-terrace just off Notting Hill Gate. Across 424 square feet, a spacious double bedroom neighbours a living room with large, sash windows, quintessentially Victorian picture rails, and a separate kitchen.

Clanricarde Gardens is just off Notting Hill Gate itself, with the underground station just 5-minutes' walk away for the central, circle and district lines. London's finest green spaces, Kensington Gardens and Hyde Park, are on your doorstep for a stroll in the frost of winter or a picnic with friends on a summer evening.



LB Residential

Grand Union Studios  
332 Ladbroke Grove  
W10 5AD

Email: [hello@lbresidential.co.uk](mailto:hello@lbresidential.co.uk)

Web: [www.lbresidential.co.uk](http://www.lbresidential.co.uk)

Tel: 0203 062 6262