

shepherds

A better home
moving experience



1 Parkhurst Road

Hertford, SG14 3AZ

Guide Price £755,000



1 Parkhurst Road

Hertford, SG14 3AZ

SOLD BY SHEPHERDS - A beautifully presented three bedroom, three bathroom Victorian end of terrace home, positioned on one of Bengeo's most sought after and characterful roads, within easy walking distance of Hertford town centre, Hertford North station and well regarded local schooling.

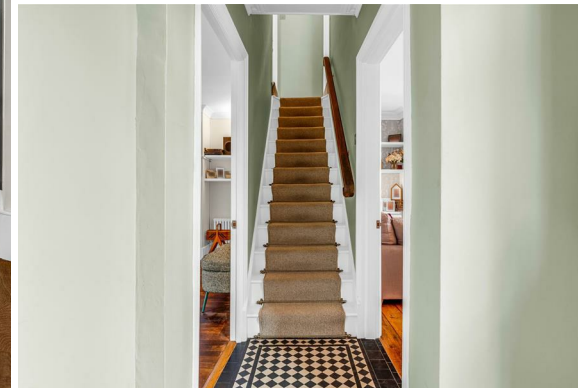
The property has been thoughtfully updated to combine modern living with a wealth of original features, creating a home that offers both charm and practicality in equal measure.

The ground floor is centred around a stunning open plan kitchen, living and dining space, ideal for both everyday living and entertaining. The kitchen is finished to a high standard and features a large central island, with French doors opening directly onto an immaculate south facing rear garden. To the front of the house is a separate living room, complete with original fireplace, wood flooring and a bay window with fitted seating, all accessed via a beautiful entrance hall. A downstairs WC completes the ground floor.

The accommodation is arranged over three floors. On the first floor are two generous double bedrooms, both benefitting from built-in wardrobes and modern en-suite bathrooms. The top floor offers a further double bedroom with its own bathroom, along with useful eaves storage.

Externally, the south facing garden is a real highlight, having been beautifully maintained, and there is also the added benefit of a dropped kerb providing potential for off street parking, subject to the usual consents.

Parkhurst Road is widely regarded as one of Bengeo's premier roads, offering a blend of period homes and a strong community feel, all within close proximity to green spaces, schools and excellent transport links.

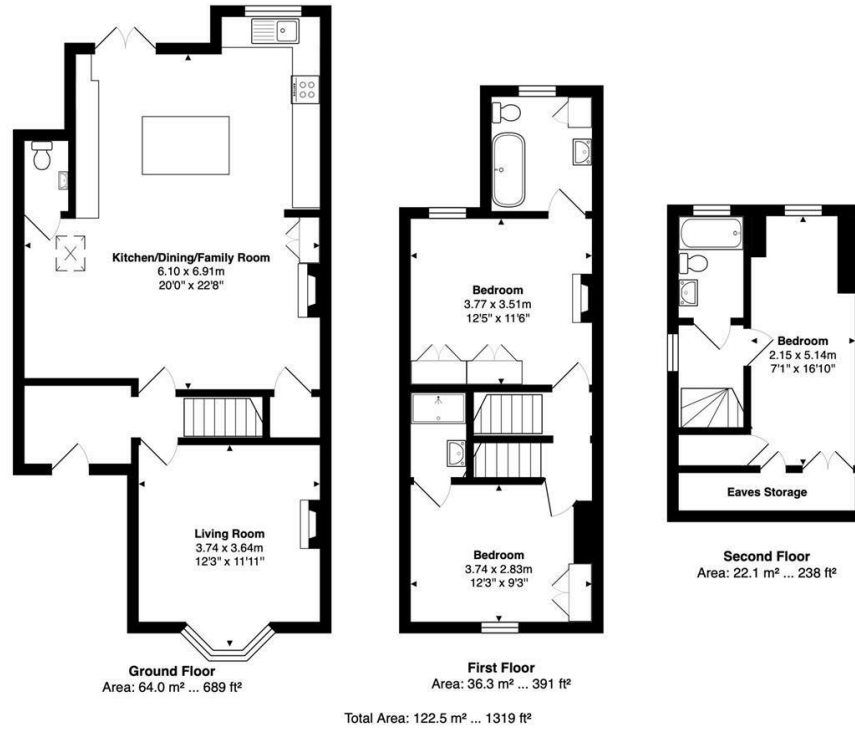




- Beautiful three bedroom, three bathroom Victorian end of terrace home
- Positioned on one of Bengoe's most sought after roads
- Blend of original character features and modern finish throughout
- Stunning open plan kitchen/living/dining space with central island
- Separate front living room with bay window, original fireplace & wood flooring
- French doors opening onto an immaculate south facing rear garden
- Two first floor double bedrooms, both with en-suites and built-in wardrobes
- Top floor double bedroom with additional bathroom and eaves storage
- Downstairs WC and well presented entrance hall
- Potential for off street parking via existing dropped kerb (STPP), within walking distance of Hertford North station, town centre and well regarded schools



Floor Plan

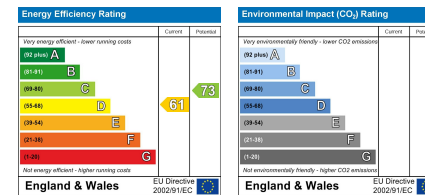


FOR ILLUSTRATIVE PURPOSES ONLY; NOT TO SCALE
 Whilst every attempt has been made to ensure the accuracy of the floor plan shown, all measurements, positioning, fixtures, features, fittings and any other data shown are an approximate interpretation for illustrative purposes only and are not to scale. No responsibility is taken for any error, omission, miss-statement or use of data shown.
 Property marketing provided by www.matthewkyle.co.uk

Viewing

Please contact Shepherds of Hertford on 01992 551955 if you wish to arrange a viewing appointment for this property or require further information.

Energy Performance Graph



These particulars, whilst believed to be accurate are set out as a general outline only for guidance and do not constitute any part of an offer or contract. Intending purchasers should not rely on them as statements of representation of fact, but must satisfy themselves by inspection or otherwise as to their accuracy. No person in this firm's employment has the authority to make or give any representation or warranty in respect of the property.

Riverside House, 6 Millbridge, Hertford, SG14 1PY
 Tel: 01992 551955 Email: enquiries@shepherdsfhertford.co.uk