



Roman Way Boughton Monchelsea Maidstone ME17 4SG

for sale offers over
£375,000



Property Description

This beautiful family home has much to offer, with having the benefits of a garage en bloc and allocated parking. Stepping into the home you have a welcoming entrance hall, a contemporary fitted kitchen with integrated appliances, and a generous lounge/dining area that opens onto a private rear garden – ideal for entertaining or relaxing, with a lovely summer house and rear access. A convenient downstairs WC completes this level.

Upstairs, you'll find two spacious double bedrooms along with a stylish family bathroom. The main bedroom benefits from being on the top floor with an ensuite and built-in wardrobes, providing excellent storage.

Situated in a quiet residential setting, Roman Way offers easy access to Maidstone town centre, local amenities, and excellent transport links via the A229 and M20. Nearby rail stations include Maidstone West and Bearsted.



Ground Floor

Entrance Hall

Cloakroom

Lounge

19' 7" Max x 13' 2" Max (5.97m Max x 4.01m Max)

Kitchen

10' 2" Max x 8' 5" Max (3.10m Max x 2.57m Max)

First Floor

Bedroom Two

13' 5" Max x 13' 3" Max (4.09m Max x 4.04m Max)

Bedroom Three

13' 3" x 10' 2" (4.04m x 3.10m)

Bathroom

Second Floor

Bedroom One

14' 7" Into Recess x 9' 9" Max (4.45m Into Recess x 2.97m Max)
Restricted head height

En Suite

Restricted head height

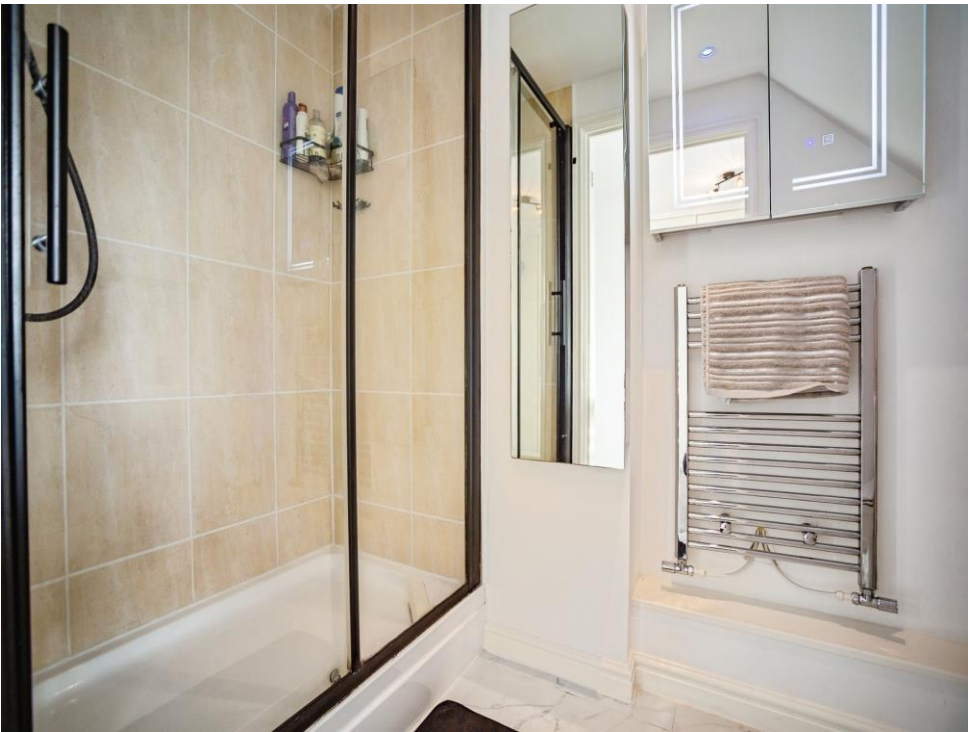
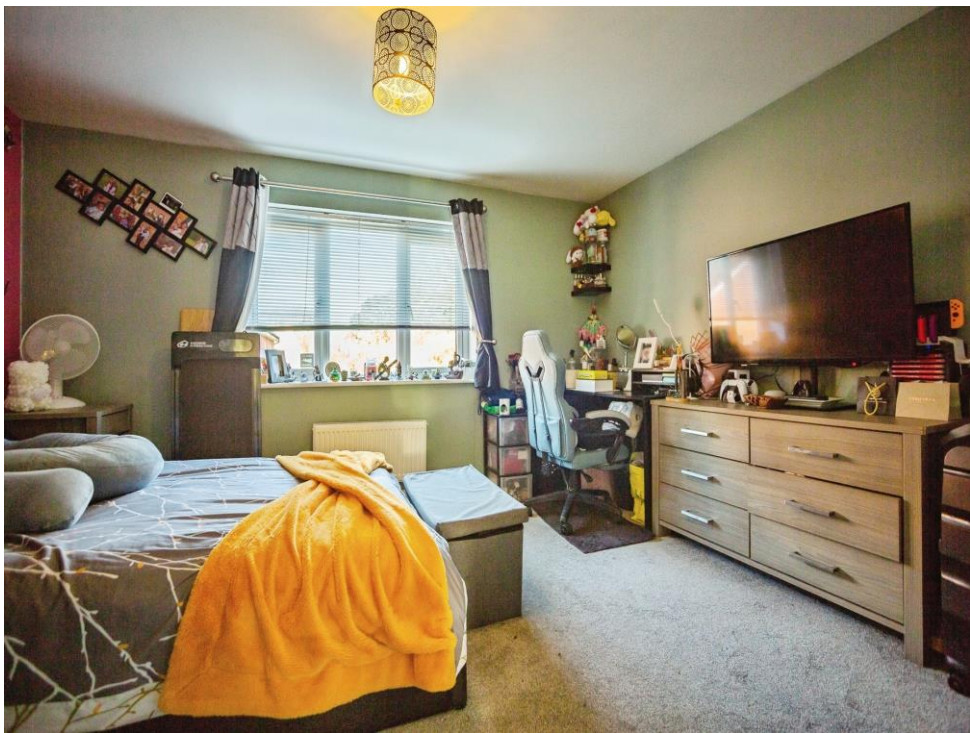
Garage

Rear Garden

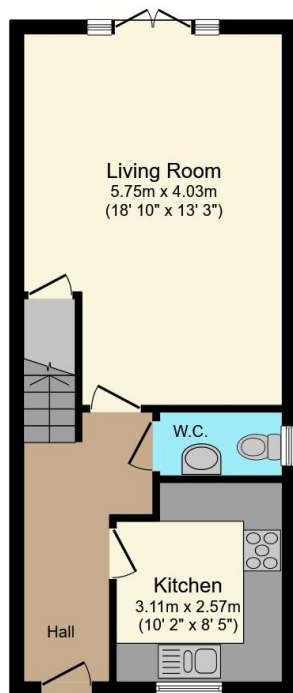
Agents Note

£60 per year management service charge

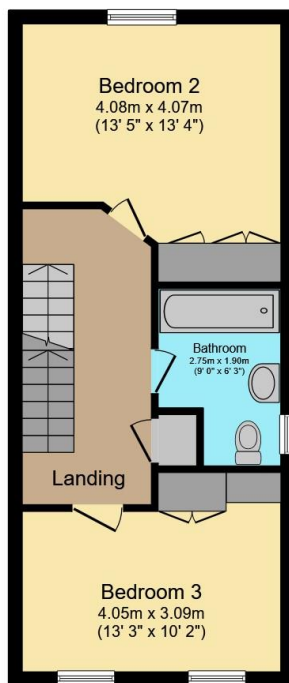




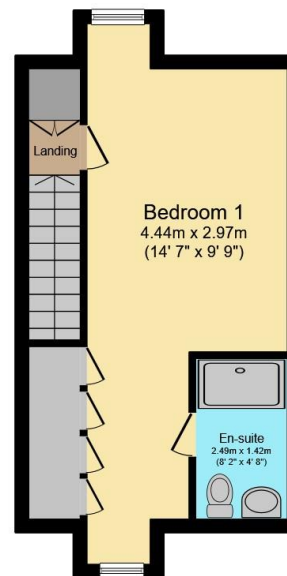




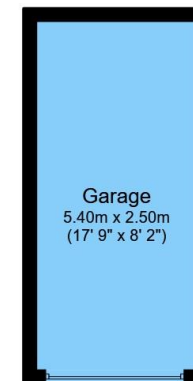
Ground Floor



First Floor



Second Floor



Garage

Total floor area 123.0 m² (1,324 sq.ft.) approx

This floor plan is for illustrative purposes only. It is not drawn to scale. Any measurements, floor areas (including any total floor area), openings and orientation are approximate. No details are guaranteed, they cannot be relied upon for any purpose and they do not form part of any agreement. No liability is taken for any error, omission or misstatement. A party must rely upon its own inspection(s). Powered by www.propertybox.io

Connells

To view this property please contact Connells on

T 01622 751034

E maidstone@connells.co.uk

30 King Street
MAIDSTONE ME14 1BS

EPC Rating: C Council Tax
Band: D

Tenure: Freehold

view this property online connells.co.uk/Property/MAI408335



1. MONEY LAUNDERING REGULATIONS Intending purchasers will be asked to produce identification documentation at a later stage and we would ask for your co-operation in order that there will be no delay in agreeing the sale. 2. These particulars do not constitute part or all of an offer or contract. 3. The measurements indicated are supplied for guidance only and as such must be considered incorrect. Potential buyers are advised to recheck measurements before committing to any expense. 4. We have not tested any apparatus, equipment, fixtures, fittings or services and it is in the buyers interest to check the working condition of any appliances.

Connells Residential is registered in England and Wales under company number 1489613, Registered Office is Cumbria House, 16-20 Hockliffe Street, Leighton Buzzard, Bedfordshire, LU7 1GN. VAT Registration Number is 500 2481 05.

See all our properties at www.connells.co.uk | www.rightmove.co.uk | www.zoopla.co.uk

Property Ref: MAI408335 - 0004