



## Glen Tarn, Newsham

Offers in the Region of £159,995

Located close to the centre of this highly regarded village, Glen Tarn is a characterful mid terraced cottage providing well planned living spaces with the benefit of a patio garden. To the ground floor there is a living room with a log burning stove, a snug/study area and a kitchen. The first floor has two bedrooms and a bathroom. Externally there is the low maintenance garden which makes a lovely space for relaxing. Being offered to the market CHAIN FREE, an early inspection is strongly recommended!

21 Market Place, Richmond, North Yorkshire, DL10 4QG

# Glen Tarn, Newsham

Located close to the centre of this highly regarded village, Glen Tarn is a characterful mid terraced cottage providing well planned living spaces with the benefit of a patio garden. To the ground floor there is a living room with a log burning stove, a snug/study area and a kitchen. The first floor has two bedrooms and a bathroom. Externally there is the low maintenance garden which makes a lovely space for relaxing. Being offered to the market CHAIN FREE, an early inspection is strongly recommended!

## **Living Room:**

4.20m x 3.67m

Accessed through a part glazed upvc door, the living room features exposed ceiling beams, a log burning stove, a TV point, a upvc double glazed window to the front of the cottage and an electric heater.



There is space for a cooker and a fridge freezer, plumbing for a washing machine, an electric heater, a upvc double glazed window and a part glazed upvc door opening out to the garden.

## **Snug/Study:**

3.28m x 2.25m

A useful area which could be utilised as a study area, a snug or a dining area. There is an electric heater and useful under stairs storage.



## **First Floor Landing:**

Accessed via stone stairs with a upvc double glazed window that gives an open aspect rear view.



## **Kitchen:**

4.50m x 1.71m

Fitted with a range of wall and base units with complimenting countertops.

### **Bedroom 1:**

4.19m x 2.87m

A double bedroom with an original fireplace, an electric heater and a upvc double glazed window.



### **Bedroom 2:**

3.21m x 1.59m

With an electric heater, a built in wardrobe, loft access and a upvc double glazed window to the rear of the property.



### **Bathroom:**

Fitted with a bath with an electric shower over, a WC, a wash hand basin and a heated towel rail.



### **External**

To the rear of the cottage there is a generous low maintenance garden with an open aspect and a stone store.

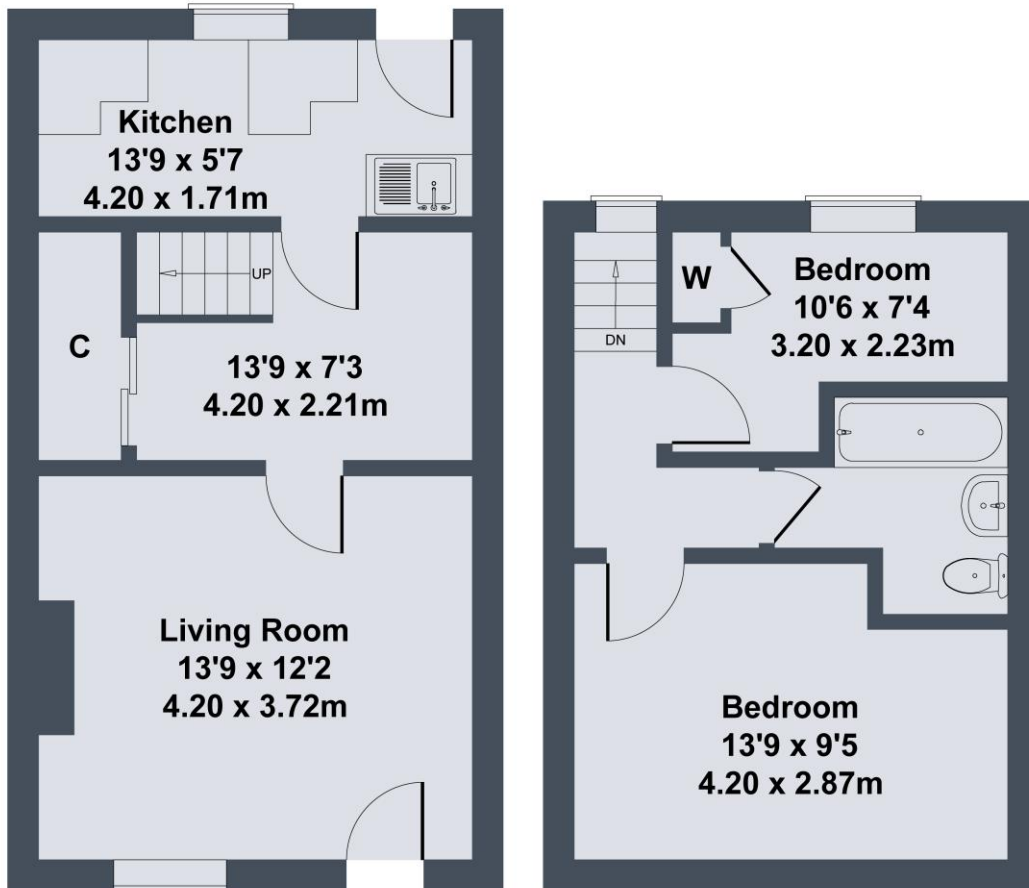


### **Additional Information**

The postcode is DL11 7QZ and the Council Tax Band is B.



**Glen Tarn, Newsham, DL11 7QZ**



**GROUND FLOOR**

**FIRST FLOOR**

SKETCH PLAN FOR ILLUSTRATIVE PURPOSES ONLY

All measurements walls, doors, windows, fittings and appliances, their sizes and locations, are approximate only. They cannot be regarded as being a representation by the seller, nor their agent.

Produced by Potterplans Ltd. 2025