



Foxley, Perry Green, Much Hadham

SG10 6EF

Price Guide £1,500,000



stevenoates.com



Foxley Perry Green, Much Hadham, SG10 6EF

A truly exceptional 5 bedroom detached family home located within an enviable position directly overlooking beautiful countryside yet only a short stroll from the excellent and recently re-opened pub, The Hoops. The property has been renovated and extended in recent years offering a perfect blend of modern, practical living without losing its original charm. The stylish accommodation comprises of a large entrance hall with downstairs cloakroom, 3 reception rooms, an excellent sized kitchen/family room with bi-folding doors which open up to the gardens as well as a utility room on the ground floor. On the first floor, there are 5 bedrooms including the main bedroom which features a walk-in wardrobe and en-suite. There is also a family bathroom and another en-suite shower room to the guest bedroom. In addition to the main house, there is a large detached double garage with a workshop featuring a spiral wine cellar and an office above. The grounds surround the house with ample driveway space and beautiful, mature gardens with a number of entertaining spaces and a large timber summerhouse. Viewing really is essential to fully appreciate this excellent village home.

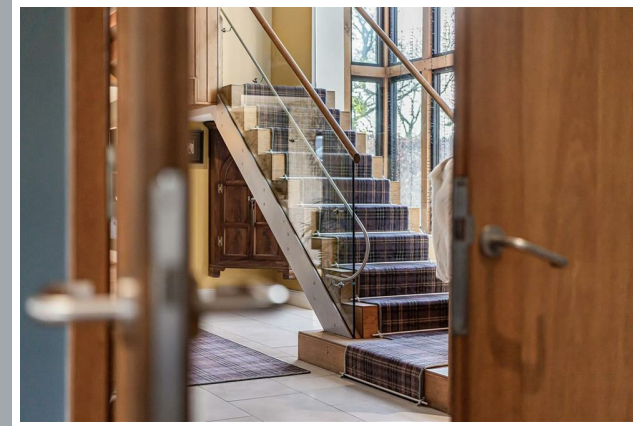
The property is located in the pretty village hamlet of Perry Green, home of the renowned Henry Moore foundation which displays many of the artist's sculptures, and forms part of the Parish of Much Hadham offering a thriving community with a number of notable events throughout the year. There are a number of quality village pubs nearby as well as a village shop, another pub and an excellent village school within the main village of Much Hadham. Bishops Stortford and Sawbridgeworth are both only a short drive away providing an excellent choice of shops, restaurants, schooling for all ages and mainline stations providing fast services to London.



70 Fore Street, Hertford, Hertfordshire, SG14 1BY



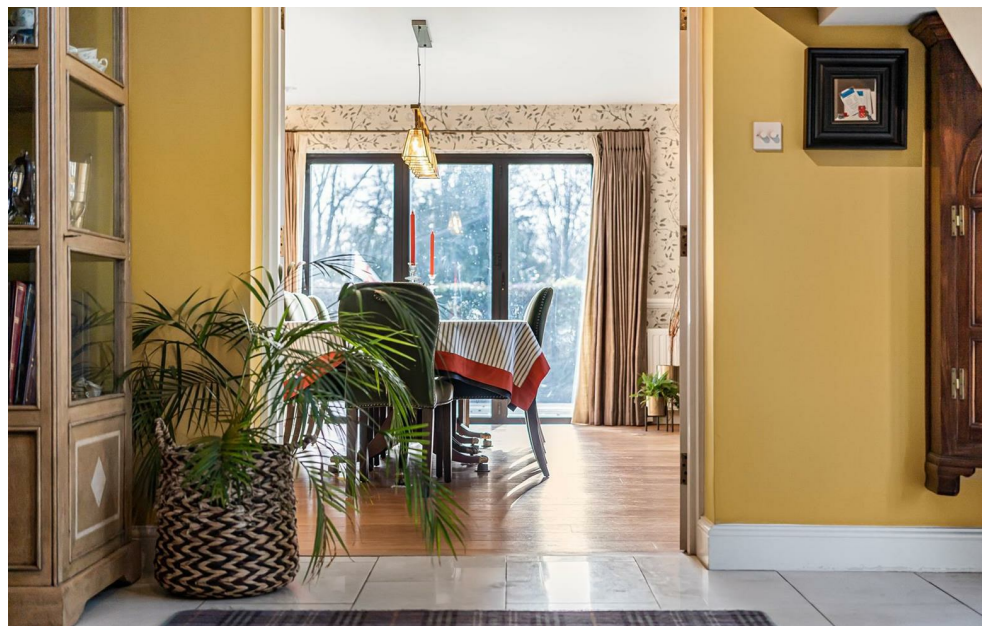
70 Fore Street, Hertford, Hertfordshire, SG14 1BY



70 Fore Street, Hertford, Hertfordshire, SG14 1BY



70 Fore Street, Hertford, Hertfordshire, SG14 1BY



70 Fore Street, Hertford, Hertfordshire, SG14 1BY



70 Fore Street, Hertford, Hertfordshire, SG14 1BY



70 Fore Street, Hertford, Hertfordshire, SG14 1BY



70 Fore Street, Hertford, Hertfordshire, SG14 1BY



70 Fore Street, Hertford, Hertfordshire, SG14 1BY



70 Fore Street, Hertford, Hertfordshire, SG14 1BY

**Approximate Gross Internal Area 2961 sq ft - 275 sq m
(Excluding Garage & Outbuilding)**

Ground Floor Area 1770 sq ft - 164 sq m

First Floor Area 1191 sq ft - 111 sq m

Ground Floor Garage Area 426 sq ft - 40 sq m

First Floor Garage Area 313 sq ft - 29 sq m

Outbuilding Area 36 sq ft - 3 sq m



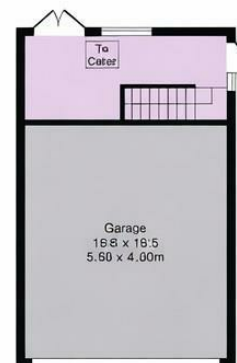
First Floor



Garage First Floor



Ground Floor



Garage Ground Floor



Outbuilding

These particulars, whilst believed to be accurate are set out as a general outline only for guidance and do not constitute any part of an offer or contract. Intending purchasers should not rely on them as statements of representation of fact, but must satisfy themselves by inspection or otherwise as to their accuracy. No person in this firm's employment has the authority to make or give any representation or warranty in respect of the property.



stvenoates.com