

**FOR SALE**



**Milton Road, Portsmouth**  
**Asking Price Of £210,000**

**MARTIN & CO**

# Milton Road, Portsmouth

Asking Price Of £210,000

- THREE DOUBLE BEDROOMS
- FIRST FLOOR MAISONETTE
- EN-SUITE TO MASTER BEDROOM
- SPACIOUS ROOMS THROUGHOUT
- ONLINE 360 DEGREE VIRTUAL TOUR AVAILABLE

Spacious character maisonette with share of freehold, Milton Road, Portsmouth. Well- presented first- floor home arranged over two levels, featuring elegant living room with fireplace, two double bedrooms plus large master suite with en- suite, fitted kitchen/diner, family bathroom, and ample storage

□ Character Maisonette w ith Spacious Interiors - Milton Road, Portsmouth

A beautifully presented first-floor maisonette retaining many original features, offering generous accommodation across two levels. Ideal as a much-loved family home or a smart buy-to-let investment, this property is offered with no forward chain.

### Key Features

- Private entrance via storm porch
- Welcoming landing with walk-in cupboard
- Elegant living room with original fireplace
- Two double bedrooms, one with bay window and fitted storage
- Family bathroom with shower over bath
- Fitted kitchen with dining/breakfast area



- Second-floor master suite with Velux windows, extensive eaves storage, and en-suite shower room
- Gas central heating throughout

**Lifestyle & Investment Appeal**

Spacious, light-filled, and full of character, this home combines period charm with modern convenience. The flexible layout makes it perfect for families, professionals, or investors seeking strong rental demand in Milton Road.

**Tenure**

This property is offered with a share of the freehold, providing buyers with greater security and control compared to a standard leasehold arrangement.

**Location**

□ Milton Road is well-connected to local amenities, schools, and transport links, making it a sought-after area for both families and tenants.

**Next Steps**

- Explore the 360° virtual tour before arranging your visit.
- Contact Martin & Co by phone or send an enquiry online, and one of our team will be in touch.

HMRC COMPLIANCE All sellers and buyers will be required to complete online identity checks provided by MoveButler. The cost of these checks is £60 inc. VAT per person which is paid in advance, directly to MoveButler. This charge verifies your identity in line with our obligations as agreed with HMRC.



MARTIN & CO

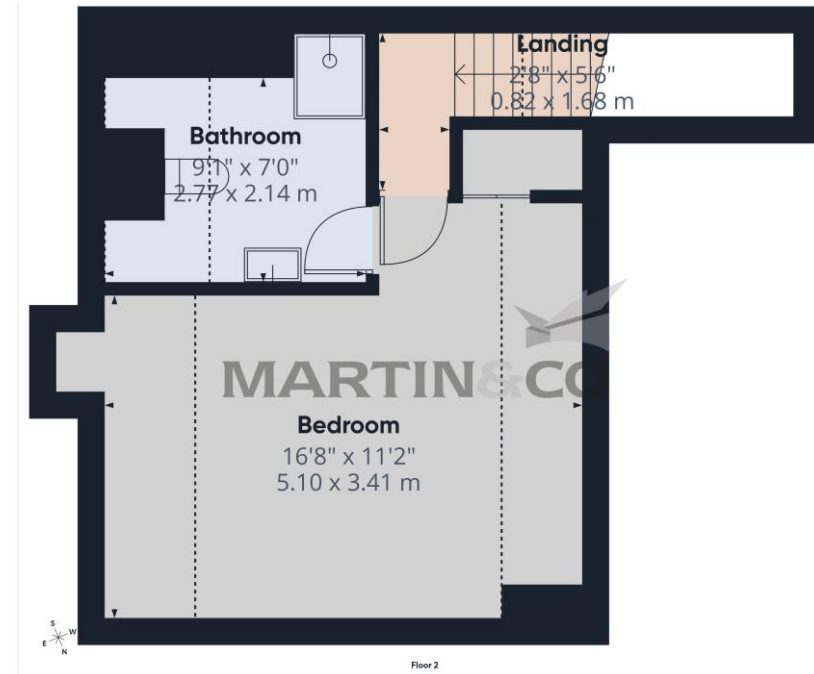
Score	Energy rating	Current	Potential
92+	A		
81-91	B		
69-80	C		77 C
55-68	D	65 D	
39-54	E		
21-38	F		
1-20	G		



MARTIN & CO



MARTIN & CO



## Martin & Co Portsmouth

4 Grove Road South • Southsea • PO5 3QT  
 T: 02392 987001 • E: portsmouth@martinco.com

# 02392 987001

<http://www.martinco.com>



**Accuracy:** References to the Tenure of a Property are based on information supplied by the Seller. The Agent has not had sight of the title documents. A Buyer is advised to obtain verification from their Solicitor. Items shown in photographs including but not limited to carpets, fixtures and fittings are not included unless specifically mentioned within the sales particulars. They may however be available by separate negotiation. Buyers must check the availability of any property and make an appointment to view before embarking on any journey to see a property. No person in the employment of the agent has any authority to make any representation about the property, and accordingly any information given is entirely without responsibility on the part of the agents, sellers(s) or lessors(s). Any property particulars are not an offer or contract, nor form part of one. **Sonic / Laser Tape:** Measurements taken using a sonic / laser tape measure may be subject to a small margin of error. **All Measurements:** All Measurements are Approximate. **Services Not tested:** The Agent has not tested any apparatus, equipment, fixtures and fittings or services and so cannot verify that they are in working order or fit for the purpose. A Buyer is advised to obtain verification from their Solicitor or Surveyor.