



Westbourne Court
Porthcawl, CF36 3HN

£210,000



Westbourne Court , Porthcawl, CF36 3HN

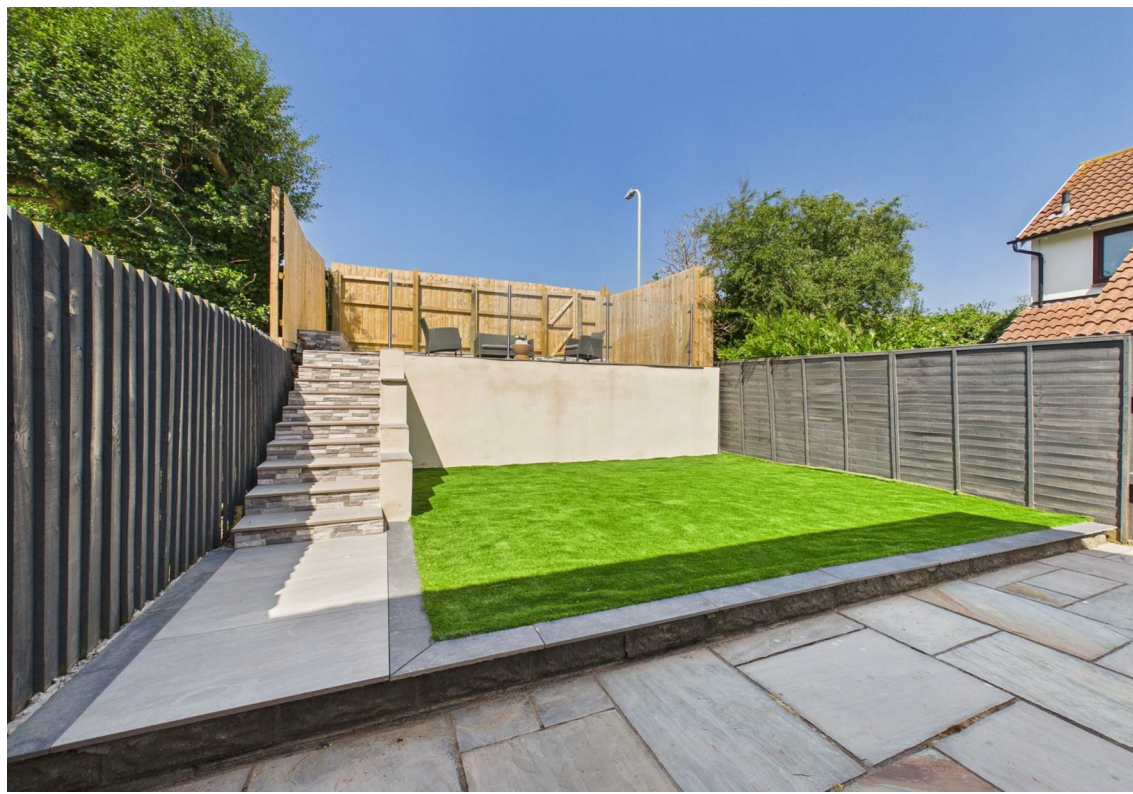
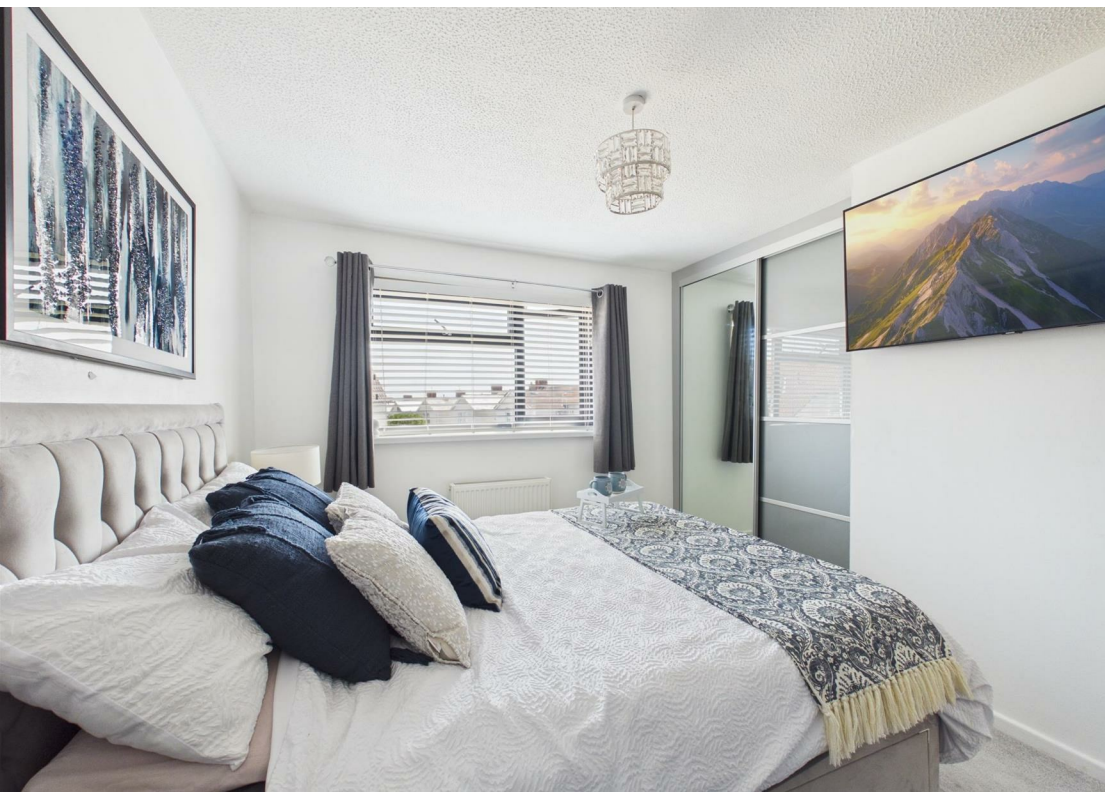
This immaculate end terrace home located in the desirable Westbourne Court, Porthcawl. This charming property offers a perfect blend of modern living and convenience, making it an ideal choice for first-time buyers.

The home features an open plan living area that seamlessly connects to a contemporary kitchen, creating a warm and inviting space for both relaxation and entertaining. The property boasts two bedrooms, providing ample space for comfortable living. The highlight of the home is undoubtedly the stunning bathroom, which serves as a show-stopping feature, adding a touch of luxury to your daily routine.

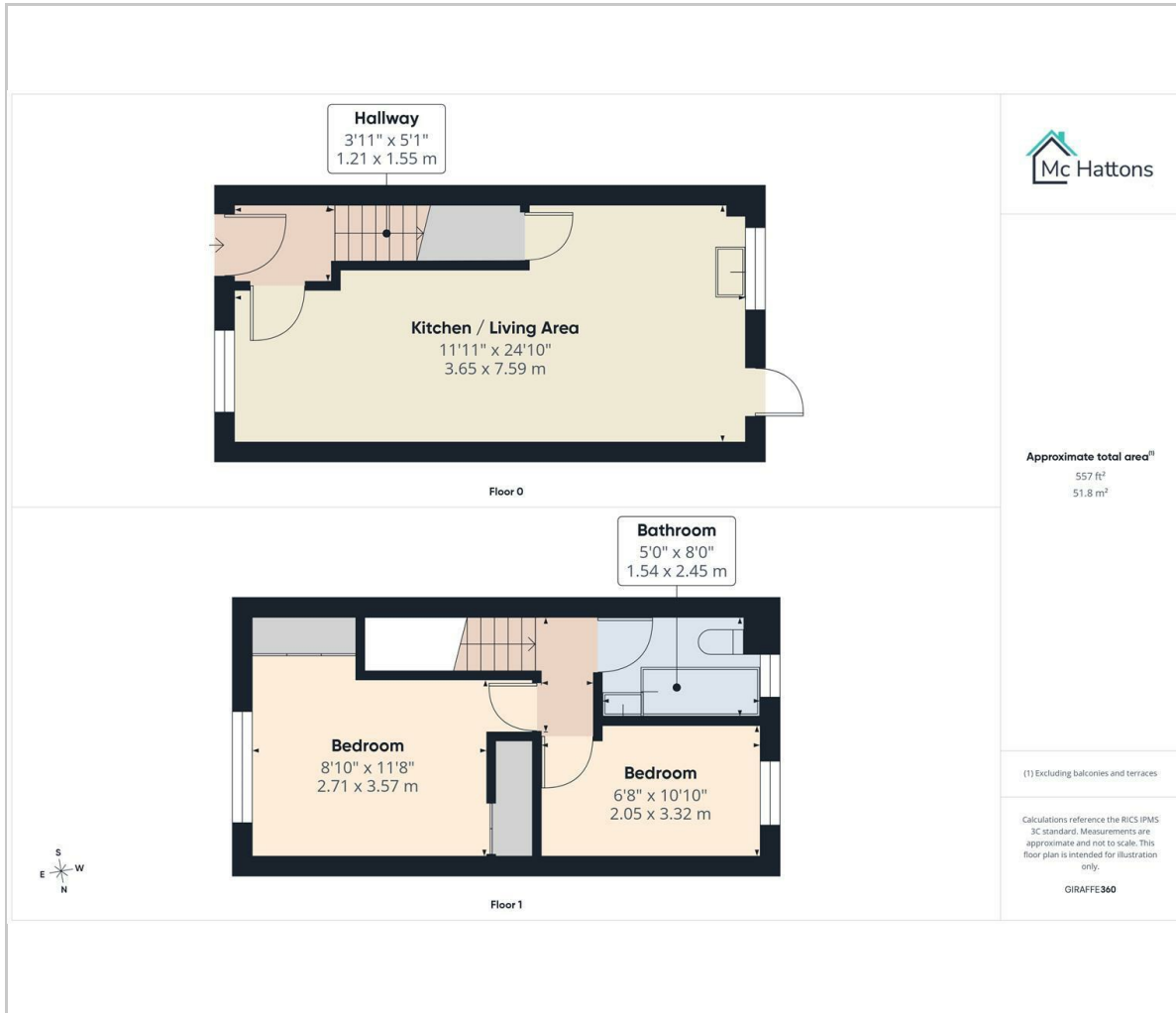
Step outside to discover a beautifully landscaped, low-maintenance rear garden, perfect for enjoying the outdoors without the hassle of extensive upkeep. This outdoor space is ideal for hosting gatherings or simply unwinding after a long day.

Additionally, the property comes with allocated parking, ensuring convenience for you and your guests. Its prime location means you are just a short distance from the vibrant town centre and the picturesque beaches of Porthcawl, allowing you to enjoy the best of coastal living.





Floor Plan



Viewing

Please contact our McHattons - Porthcawl Office on 01656 331577 if you wish to arrange a viewing appointment for this property or require further information.

These particulars, whilst believed to be accurate are set out as a general outline only for guidance and do not constitute any part of an offer or contract. Intending purchasers should not rely on them as statements of representation of fact, but must satisfy themselves by inspection or otherwise as to their accuracy. No person in this firm's employment has the authority to make or give any representation or warranty in respect of the property.

10 Lias Road Porthcawl, CF36 3AH

Tel: 01656 331577 Email: enquiries@mchattons.co.uk www.mchattons.co.uk

Area Map



Energy Efficiency Graph

